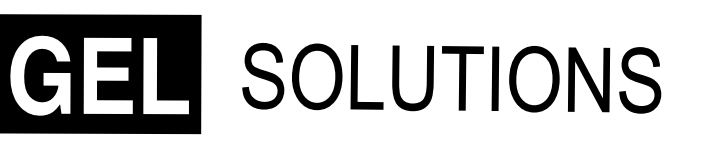


Location and Surveys



PROJECT SURVEYOR

J.E. WILSON, JR.  
DB 1519 PG 170  
PB 47 PG 147

Professional Engineer Seal  
Professional Land Surveyor Seal

**-L-**

PI Sta 1369+70.87  
 $\Delta = 0^{\circ} 09' 19.6" (LT)$   
 $D = 0^{\circ} 08' 00.0"$   
 $L = 116.58'$   
 $T = 58.29'$   
 $R = 42,971.83'$   
 $SE = NC$

I, PARKS H ICENHOUR JR, a Professional Land Surveyor in the state of North Carolina hereby certify to the best of my knowledge and belief that the following work items (Base map Compilation, R/W Staking) performed under my responsible charge meet NCDOT Survey Standards as directed in the NCDOT Location & Surveys guidelines and procedures.

I further certify that the data compiled came from available surveys/mapping performed by others and provided to me by NCDOT and do not certify to the accuracy or quality of the individual data sources.

I further certify that the right of way and permanent easement points shown herein and outlined in the tables shown hereon (localized coordinates, station/offset) have been checked and are accurate representations of the right of way and permanent easement points depicted on the corresponding highway plans. I also certify that the right of way and permanent easement points shown herein have been field monumented under my supervision from existing survey control provided by others; that the depicted property data shown herein were surveyed by others; and these monuments denote the right of way and easement boundaries at the time of staking which may be subject to change due to right of way revisions (See deeds for final determination).

Witness my original signature, registration number and seal this 31st day of March, 2020.

Professional Land Surveyor L-3996 PLS Seal

**-Y33-**

PI Sta 15+39.74  
 $\Delta = 95^{\circ} 56' 32.5" (RT)$   
 $D = 13^{\circ} 19' 28.6"$   
 $L = 720.04'$   
 $T = 477.08'$   
 $R = 430.00'$   
 $SE = 0.06$   
 $RUNOFF = 120'$

**-Y33- PC Sta. 10+62.66**  
**BEGIN CONSTRUCTION**  
**-Y33- POT Sta. 10+50.00**  
**-Y33- POT Sta. 10+00.00**

30-MAR-2020 10:00  
 C:\parks\work\contr-ol\sheets\5986B\5878\5883\Final Plans\Roadway\Proj\1-5986B\_1s\_rw43.dgn  
 George Hart  
 AT GEORGE

NOTES:

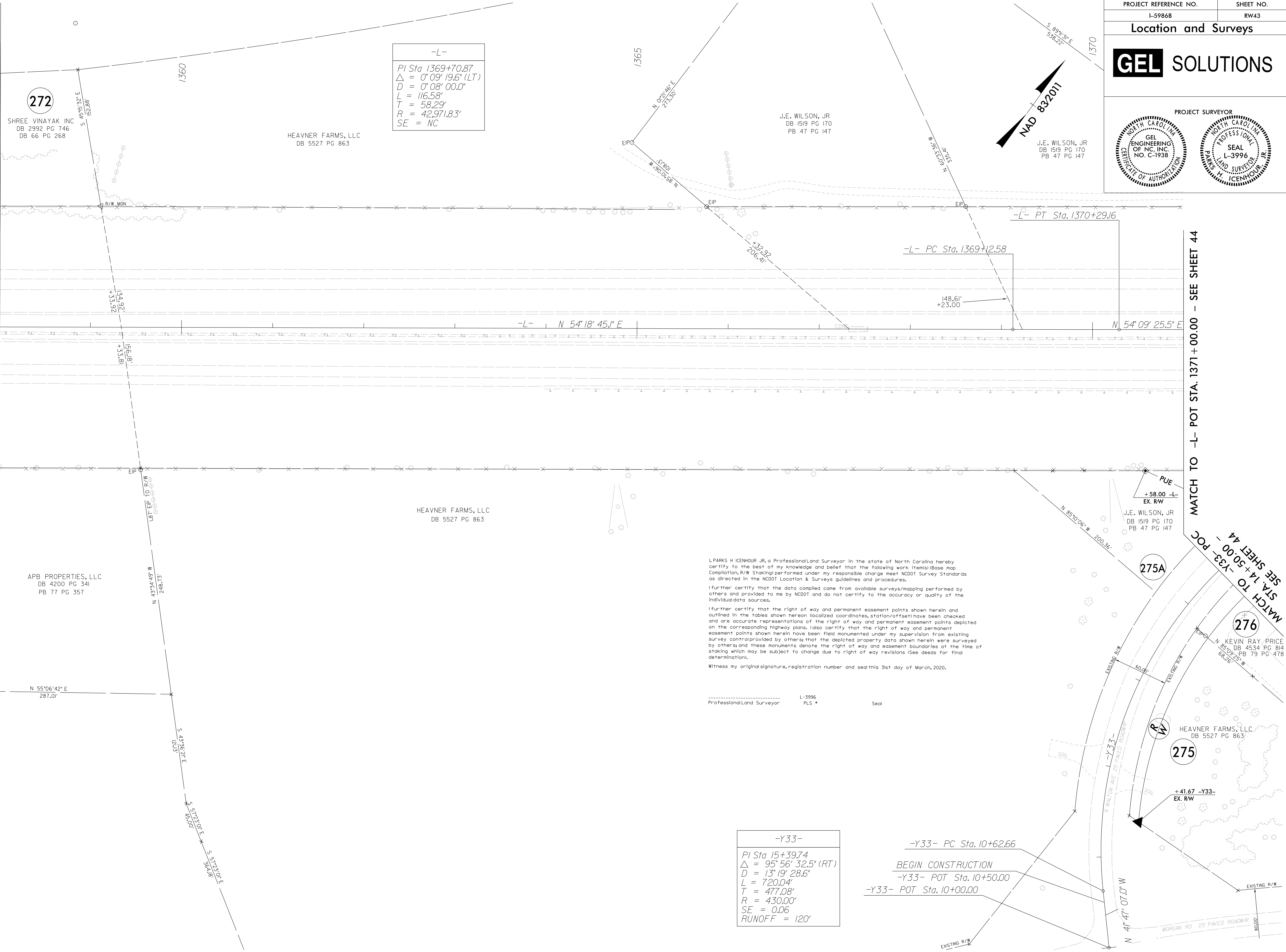
- IF FURTHER INFORMATION REGARDING PROJECT CONTROL IS NEEDED PLEASE CONTACT THE LOCATION AND SURVEYS UNIT.
- PROJECT CONTROL WAS ESTABLISHED USING GNSS, THE GLOBAL NAVIGATION SATELLITE SYSTEM.
- RIGHT OF WAY MONUMENTATION ESTABLISHED FEBRUARY 10TH, 2020 TO MARCH 20TH, 2020.

REVISIONS  
 REVISIONS

MATCH TO -L- POT STA. 1358 +00.00 - SEE SHEET 42

MATCH TO -L- POT STA. 1371 +00.00 - SEE SHEET 44

MATCH TO -Y33- POC STA. 14 +50.00 - SEE SHEET 44



272  
 SHREE VINAYAK INC  
 DB 2992 PG 746  
 DB 66 PG 268

HEAVNER FARMS, LLC  
 DB 5527 PG 863

J.E. WILSON, JR  
 DB 1519 PG 170  
 PB 47 PG 147

J.E. WILSON, JR  
 DB 1519 PG 170  
 PB 47 PG 147

APB PROPERTIES, LLC  
 DB 4200 PG 341  
 PB 77 PG 357

HEAVNER FARMS, LLC  
 DB 5527 PG 863

275A

276  
 KEVIN RAY PRICE  
 DB 4534 PG 814  
 PB 79 PG 478

275  
 HEAVNER FARMS, LLC  
 DB 5527 PG 863

EXISTING R/W  
 MORGAN RD 25' PAVED ROADWAY  
 4" 47' 07" W