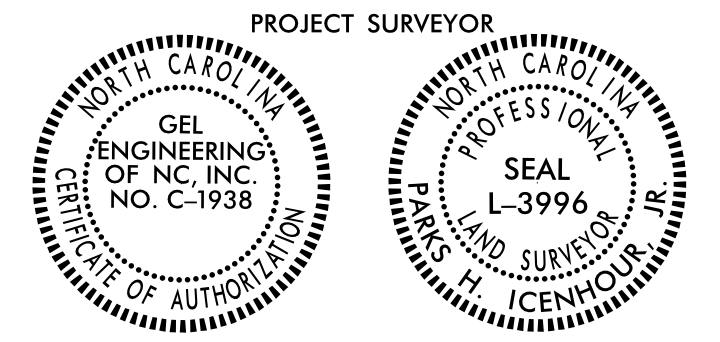


Location and Surveys

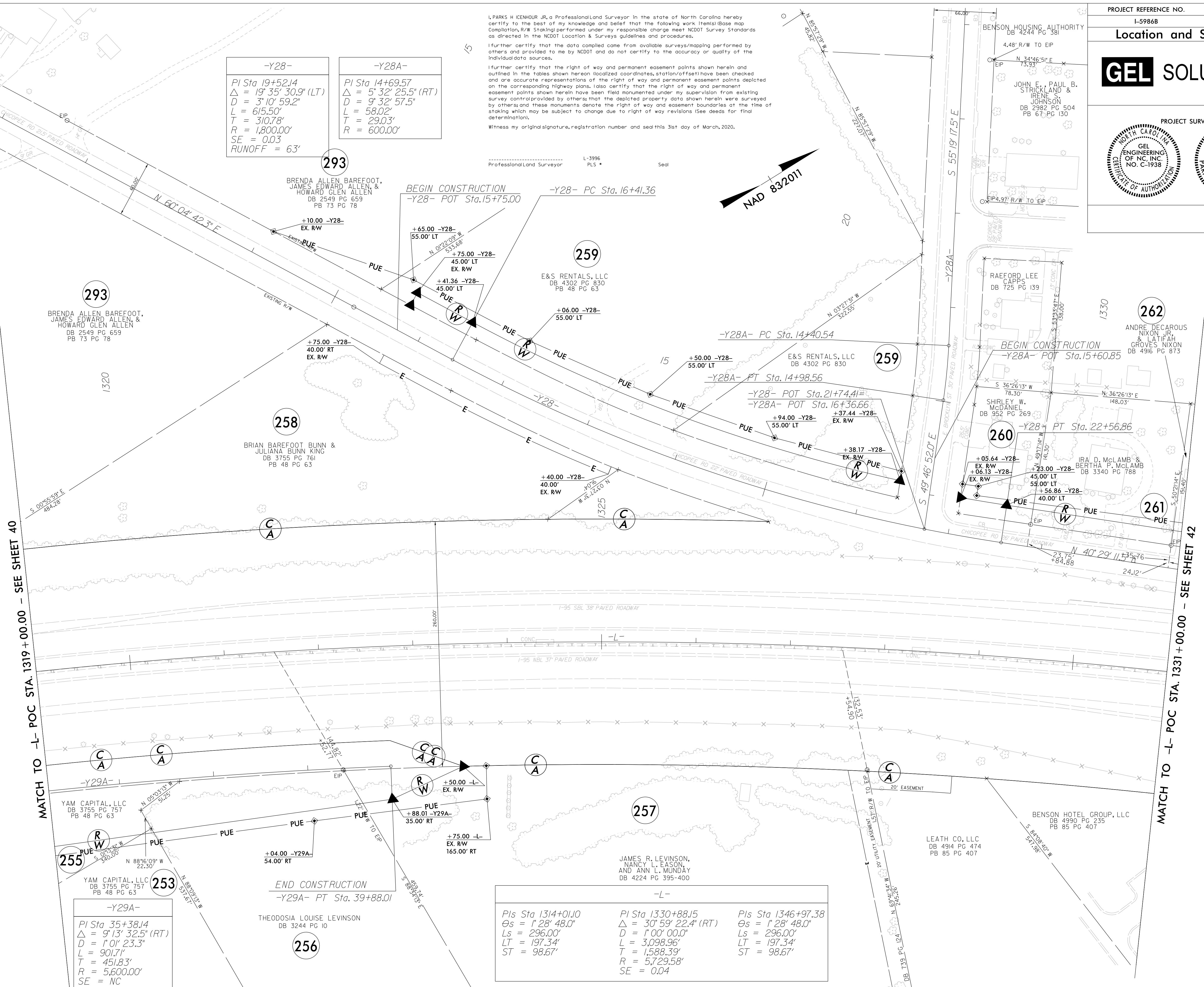


I, PARKS H ICENHOUR JR, a Professional Land Surveyor in the state of North Carolina hereby certify to the best of my knowledge and belief that the following work items (Base map compilation, R/W Staking) performed under my responsible charge meet NCDOT Survey Standards as directed in the NCDOT Location & Surveys guidelines and procedures.

Witness my original signature, registration number and seal this 31st day of March, 2020.

Professional Land Surveyor L-3996 PLS Seal

-Y28-	-Y28A-
PI Sta 19+52.14	PI Sta 14+69.57
$\Delta = 19' 35" 30.9" (LT)$	$\Delta = 5' 32" 25.5" (RT)$
$D = 3' 10" 59.2"$	$D = 9' 32" 57.5"$
$L = 615.50'$	$L = 58.02'$
$T = 310.78'$	$T = 29.03'$
$R = 1,800.00'$	$R = 600.00'$
$SE = 0.03$	
$RUNOFF = 63'$	



-Y29A-
PI Sta 35+38.14
$\Delta = 9' 13" 32.5" (RT)$
$D = 1' 01" 23.3"$
$L = 901.71'$
$T = 451.83'$
$R = 5,600.00'$
$SE = NC$

Pls Sta 1314+01.0	PI Sta 1330+88.15	Pls Sta 1346+97.38
$\Delta = 1' 28" 48.0"$	$\Delta = 30' 59" 22.4" (RT)$	$\Delta = 1' 28" 48.0"$
$Ls = 296.00'$	$D = 1' 00" 00.0"$	$Ls = 296.00'$
$LT = 197.34'$	$L = 3,098.96'$	$LT = 197.34'$
$ST = 98.67'$	$T = 1,588.39'$	$ST = 98.67'$
	$R = 5,729.58'$	
	$SE = 0.04$	

- NOTES:
- IF FURTHER INFORMATION REGARDING PROJECT CONTROL IS NEEDED PLEASE CONTACT THE LOCATION AND SURVEYS UNIT.
 - PROJECT CONTROL WAS ESTABLISHED USING GNSS, THE GLOBAL NAVIGATION SATELLITE SYSTEM.
 - RIGHT OF WAY MONUMENTATION ESTABLISHED FEBRUARY 10TH, 2020 TO MARCH 20TH, 2020.

REVISIONS

30-MAR-2020 15:34 C:\work\proj\ol\sheets\5986B\5878\5883\Final Plans\Roadway\Proj\I-5986B\1s_r.w41.dgn George Hart

MATCH TO -L- POC STA. 1319+00.00 - SEE SHEET 40

MATCH TO -L- POC STA. 1331+00.00 - SEE SHEET 42