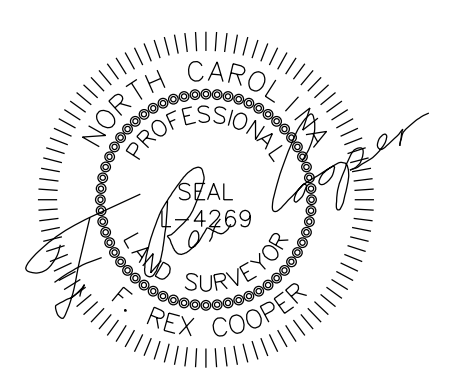


Location and Surveys



DOCUMENT NOT CONSIDERED FINAL UNLESS ALL SIGNATURES COMPLETED

NOTES:

- IF FURTHER INFORMATION REGARDING PROJECT CONTROL IS NEEDED, PLEASE CONTACT THE LOCATION AND SURVEYS UNIT.
- PROJECT CONTROL WAS ESTABLISHED USING GNSS, THE GLOBAL NAVIGATION SATELLITE SYSTEM.
- RIGHT OF WAY MONUMENTATION ESTABLISHED FROM FEBRUARY 2020 TO APRIL 2020.

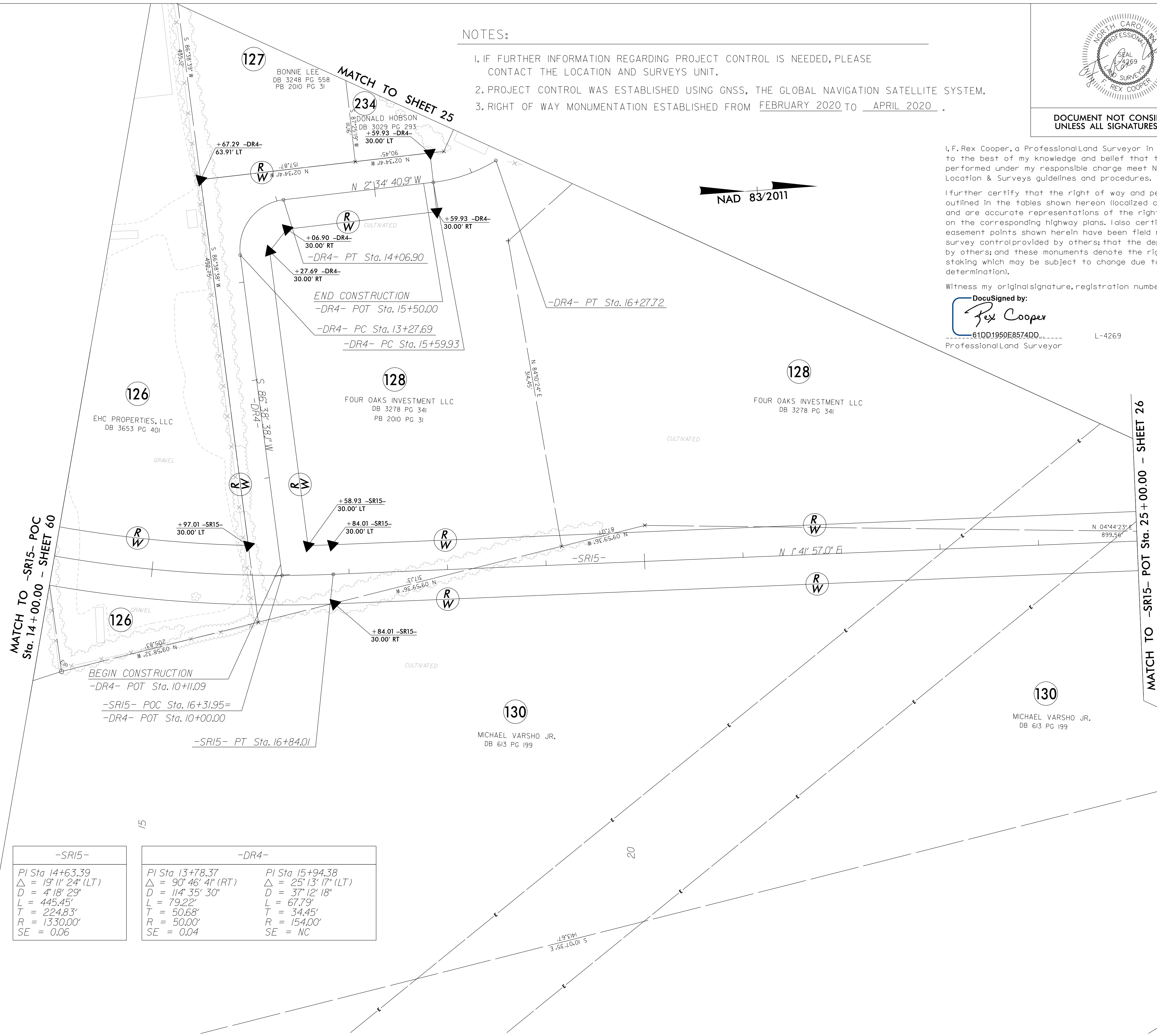
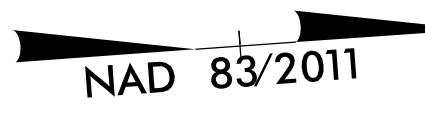
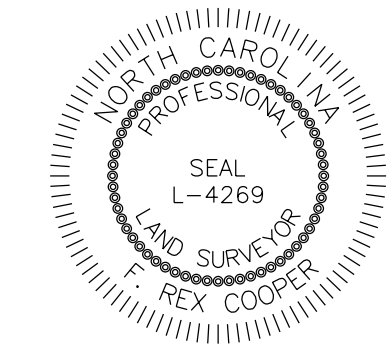
I, F. Rex Cooper, a Professional Land Surveyor in the state of North Carolina hereby certify to the best of my knowledge and belief that the following work item(s) (R/W Staking) performed under my responsible charge meet NCDOT Survey Standards as directed in the NCDOT Location & Surveys guidelines and procedures.

I further certify that the right of way and permanent easement points shown herein and outlined in the tables shown hereon (localized coordinates, station/offset) have been checked and are accurate representations of the right of way and permanent easement points depicted on the corresponding highway plans. I also certify that the right of way and permanent easement points shown herein have been field monumented under my supervision from existing survey control provided by others; that the depicted property data shown herein were surveyed by others; and these monuments denote the right of way and easement boundaries at the time of staking which may be subject to change due to right of way revisions (See deeds for final determination).

Witness my original signature, registration number and seal this 10th day of April, 2020.

DocuSigned by:

 61DD1950E8574DD L-4269
 Professional Land Surveyor



-SR15-	-DR4-	
PI Sta 14+63.39	PI Sta 13+78.37	PI Sta 15+94.38
Δ = 19° 11' 24" (LT)	Δ = 90° 46' 41" (RT)	Δ = 25° 13' 17" (LT)
D = 418' 29"	D = 114' 35' 30"	D = 37' 12' 18"
L = 445.45'	L = 79.22'	L = 67.79'
T = 224.83'	T = 50.68'	T = 34.45'
R = 1330.00'	R = 50.00'	R = 154.00'
SE = 0.06	SE = 0.04	SE = NC

130
 MICHAEL VARSHO JR.
 DB 613 PG 199

128
 FOUR OAKS INVESTMENT LLC
 DB 3278 PG 341

126
 EHC PROPERTIES, LLC
 DB 3653 PG 401

127
 BONNIE LEE
 DB 3248 PG 558
 PB 2010 PG 31

234
 DONALD HOBSON
 DB 3029 PG 293
 +59.93 -DR4-
 30.00' LT

+06.90 -DR4-
 30.00' RT
 -DR4- PT Sta. 14+06.90
 +27.69 -DR4-
 30.00' RT
 END CONSTRUCTION
 -DR4- POT Sta. 15+50.00
 -DR4- PC Sta. 13+27.69
 -DR4- PC Sta. 15+59.93

+58.93 -SR15-
 30.00' LT
 +84.01 -SR15-
 30.00' LT

+84.01 -SR15-
 30.00' RT

BEGIN CONSTRUCTION
 -DR4- POT Sta. 10+11.09
 -SR15- POC Sta. 16+31.95=
 -DR4- POT Sta. 10+00.00
 -SR15- PT Sta. 16+84.01

MATCH TO -SR15- POT Sta. 25+00.00 - SHEET 26

MATCH TO -SR15- POC Sta. 14+00.00 - SHEET 60

MATCH TO SHEET 25

REVISIONS

I:\APR-2020_17103_171784\2020.ctb\external\exports\200410\1-5986B.1s_rw61_200410.dgn
 AT: Bukovnik

FOR -SR15- PROFILE SEE SHEET 120
 FOR -DR4- PROFILE SEE SHEET 130