

NO.	REVISIONS

I, Rex Cooper, a Professional Land Surveyor in the state of North Carolina hereby certify to the best of my knowledge and belief that the following work (Items 8/8 Staking) performed under my responsible charge meet NCDOT Survey Standards as directed in the NCDOT Location & Surveys guidelines and procedures.

I further certify that the right of way and permanent easement points shown herein and outlined in the tables shown hereon (localized coordinates, station/offset) have been checked and are accurate representations of the right of way and permanent easement points depicted on the corresponding highway plans. I also certify that the right of way and permanent easement points shown herein have been field monumented under my supervision from existing survey control provided by others that the depicted property data shown herein were surveyed by others and these monuments denote the right of way and easement boundaries on the time of staking which may be subject to change due to right of way revisions (see deeds for final determination).

Witness my original signature, registration number and seal this 10th day of April, 2020.

Designed by:  
**Rex Cooper**  
 L-4269  
 Professional Land Surveyor



WILLIAM DENNING  
 ELIZABETH BERRYHILL  
 DB 799 PG 417  
 PB 2000 PG 858

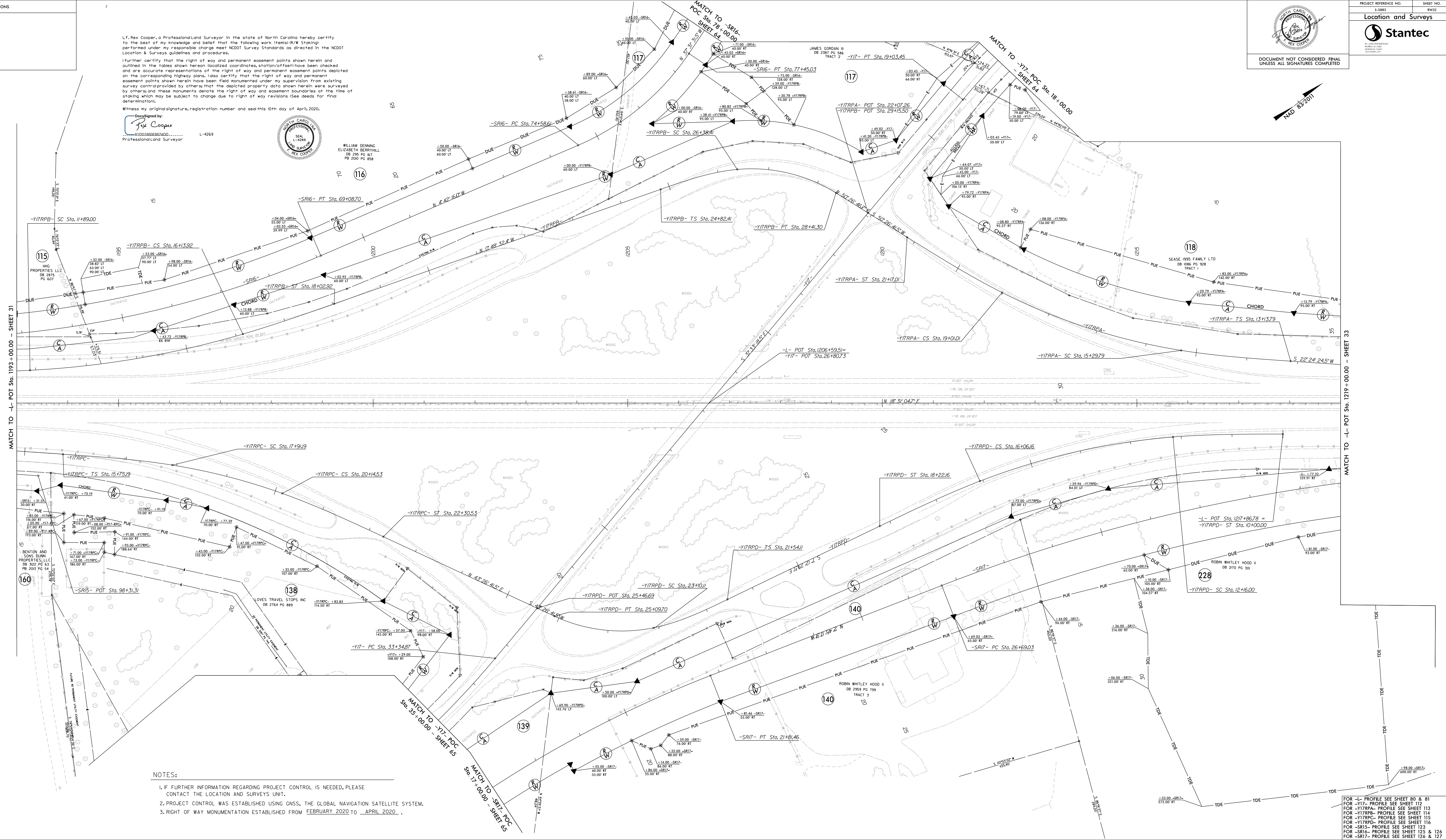
PROJECT REFERENCE NO. I-5885 SHEET NO. 19472

Location and Surveys

**Stantec**

DOCUMENT NOT CONSIDERED FINAL UNLESS ALL SIGNATURES COMPLETED

NAD 83 2011



- NOTES:
1. IF FURTHER INFORMATION REGARDING PROJECT CONTROL IS NEEDED, PLEASE CONTACT THE LOCATION AND SURVEYS UNIT.
  2. PROJECT CONTROL WAS ESTABLISHED USING GNSS, THE GLOBAL NAVIGATION SATELLITE SYSTEM.
  3. RIGHT OF WAY MONUMENTATION ESTABLISHED FROM FEBRUARY 2020 TO APRIL 2020.

FOR -L- PROFILE SEE SHEET 80 & 81  
 FOR -YIT- PROFILE SEE SHEET 112  
 FOR -YITRPA- PROFILE SEE SHEET 113  
 FOR -YITRPB- PROFILE SEE SHEET 114  
 FOR -YITRPC- PROFILE SEE SHEET 115  
 FOR -YITRPA- PROFILE SEE SHEET 116  
 FOR -SR16- PROFILE SEE SHEET 122  
 FOR -SR17- PROFILE SEE SHEET 125 & 126  
 FOR -SR17- PROFILE SEE SHEET 126 & 127