

I, Rudolf A. VanderVelde Jr., a Professional Land Surveyor in the state of North Carolina hereby certify to the best of my knowledge and belief that the following work item(s) (R/W Staking) performed under my responsible charge meet NCDOT Survey Standards as directed in the NCDOT Location & Surveys guidelines and procedures.

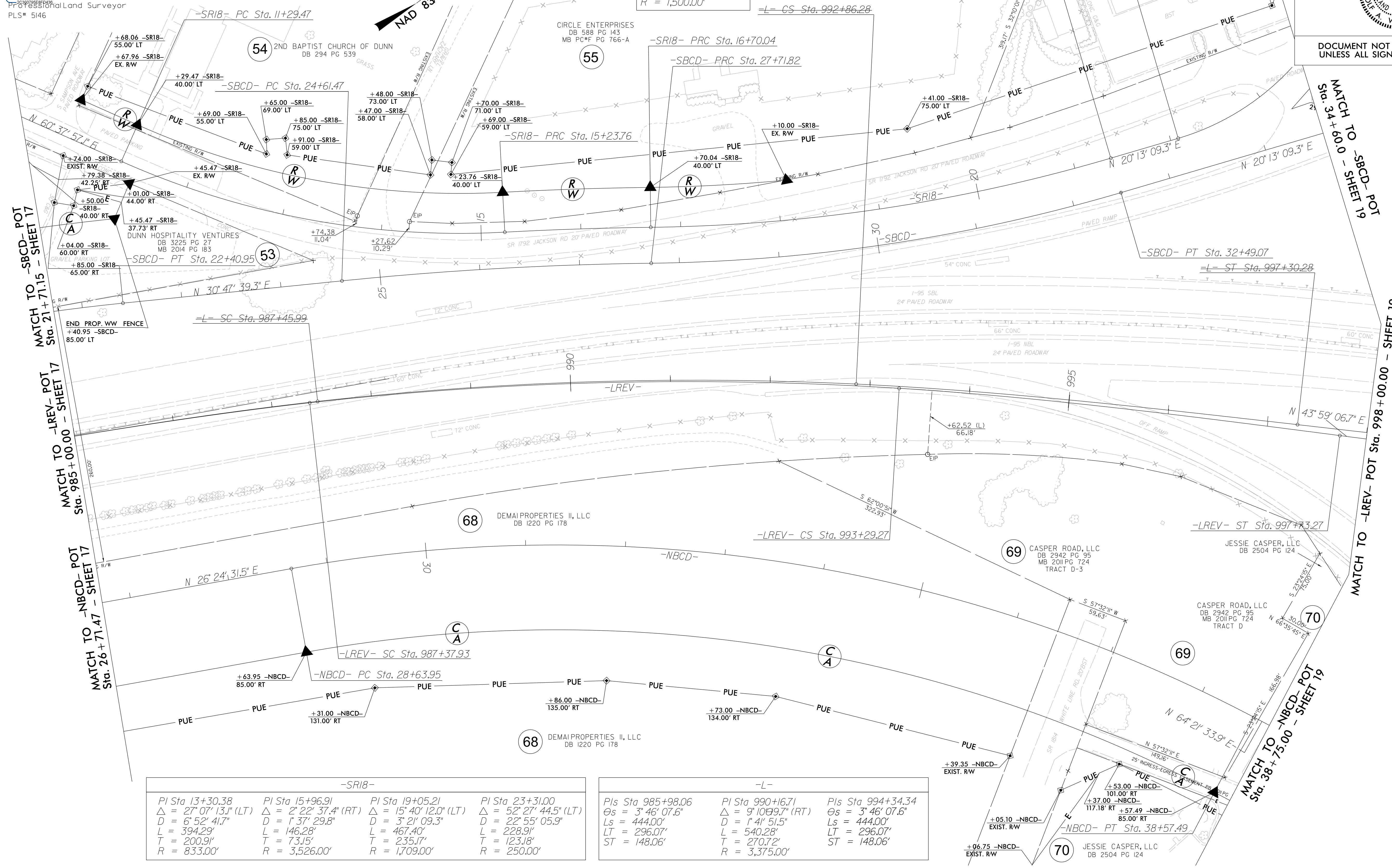
I further certify that the right of way and permanent easement points shown herein and outlined in the tables shown hereon (localized coordinates, station/offset) have been checked and are accurate representations of the right of way and permanent easement points depicted on the corresponding highway plans. I also certify that the right of way and permanent easement points shown herein have been field monumented under my supervision from existing survey control provided by others; that the depicted property data shown herein were surveyed by others; and these monuments denote the right of way and easement boundaries at the time of staking which may be subject to change due to right of way revisions (See deeds for final determination).

Witness my original signature, registration number and seal this 25th day of March, 2021.

DocuSigned by: Rudolf A. VanderVelde Jr. 3/25/2021
Professional Land Surveyor
PLS# 5146

-LREV-			-SBCD-	
Pls Sta 985+90.00 Δs = 3° 46' 07.6" Ls = 444.00' LT = 296.07' ST = 148.06'	PI Sta 990+34.36 Δ = 10° 02' 19.9" (RT) D = 1° 41' 51.5" L = 591.34' T = 296.43' R = 3,375.00'	Pls Sta 994+77.33 Δs = 3° 46' 07.6" Ls = 444.00' LT = 296.07' ST = 148.06'	PI Sta 25+73.87 Δ = 9° 02' 24.4" (RT) D = 3° 22' 13.2" L = 268.23' T = 134.39' R = 1,700.00'	PI Sta 31+44.59 Δ = 15° 43' 21.5" (LT) D = 3° 22' 13.2" L = 466.50' T = 234.72' R = 1,700.00'

-NBCD-	
PI Sta 33+79.72 Δ = 37° 57' 02.4" (RT) D = 3° 49' 11.0" L = 993.55' T = 515.77' R = 1,500.00'	



-SR18-			
PI Sta 13+30.38 Δ = 27° 07' 13.1" (LT) D = 6° 52' 41.7" L = 394.29' T = 200.91' R = 833.00'	PI Sta 15+96.91 Δ = 2° 22' 37.4" (RT) D = 1° 37' 29.8" L = 146.28' T = 73.15' R = 3,526.00'	PI Sta 19+05.21 Δ = 15° 40' 12.0" (LT) D = 3° 21' 09.3" L = 467.40' T = 235.17' R = 1,709.00'	PI Sta 23+31.00 Δ = 52° 27' 44.5" (LT) D = 22° 55' 05.9" L = 228.91' T = 123.18' R = 250.00'

-L-		
Pls Sta 985+98.06 Δs = 3° 46' 07.6" Ls = 444.00' LT = 296.07' ST = 148.06'	PI Sta 990+16.71 Δ = 9° 10' 09.7" (RT) D = 1° 41' 51.5" L = 540.28' T = 270.72' R = 3,375.00'	Pls Sta 994+34.34 Δs = 3° 46' 07.6" Ls = 444.00' LT = 296.07' ST = 148.06'

PROJECT REFERENCE NO. I-5878 SHEET NO. RW18

Location and Surveys

Engineers | Planners | Surveyors

PROJECT SURVEYOR

DOCUMENT NOT CONSIDERED FINAL UNLESS ALL SIGNATURES COMPLETED

REVISIONS

3-23-21\I-5878_1s_rw18.dgn
R:\Projects\2021\I-5878_RM Stakeout\Geomatics\NCDOT\Drawings\RM Sheets - 3-23-21\I-5878_1s_rw18.dgn
R:\Projects\2021\I-5878_RM Stakeout\Geomatics\NCDOT\Drawings\RM Sheets - 3-23-21\I-5878_1s_rw18.dgn
R:\Projects\2021\I-5878_RM Stakeout\Geomatics\NCDOT\Drawings\RM Sheets - 3-23-21\I-5878_1s_rw18.dgn
R:\Projects\2021\I-5878_RM Stakeout\Geomatics\NCDOT\Drawings\RM Sheets - 3-23-21\I-5878_1s_rw18.dgn
R:\Projects\2021\I-5878_RM Stakeout\Geomatics\NCDOT\Drawings\RM Sheets - 3-23-21\I-5878_1s_rw18.dgn

NOTES:
1. IF FURTHER INFORMATION REGARDING PROJECT CONTROL IS NEEDED, PLEASE CONTACT THE LOCATION AND SURVEYS UNIT.
2. PROJECT CONTROL WAS ESTABLISHED USING GNSS, THE GLOBAL NAVIGATION SATELLITE SYSTEM.
3. RIGHT OF WAY MONUMENTATION ESTABLISHED FROM FEBRUARY 2020 TO APRIL 2021.