
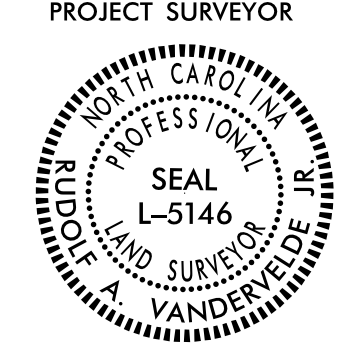


I, Rudolf A. VanderVelde Jr., a Professional Land Surveyor in the state of North Carolina hereby certify to the best of my knowledge and belief that the following work items (R/W Staking) performed under my responsible charge meet NCDOT Survey Standards as directed in the NCDOT Location & Surveys guidelines and procedures.

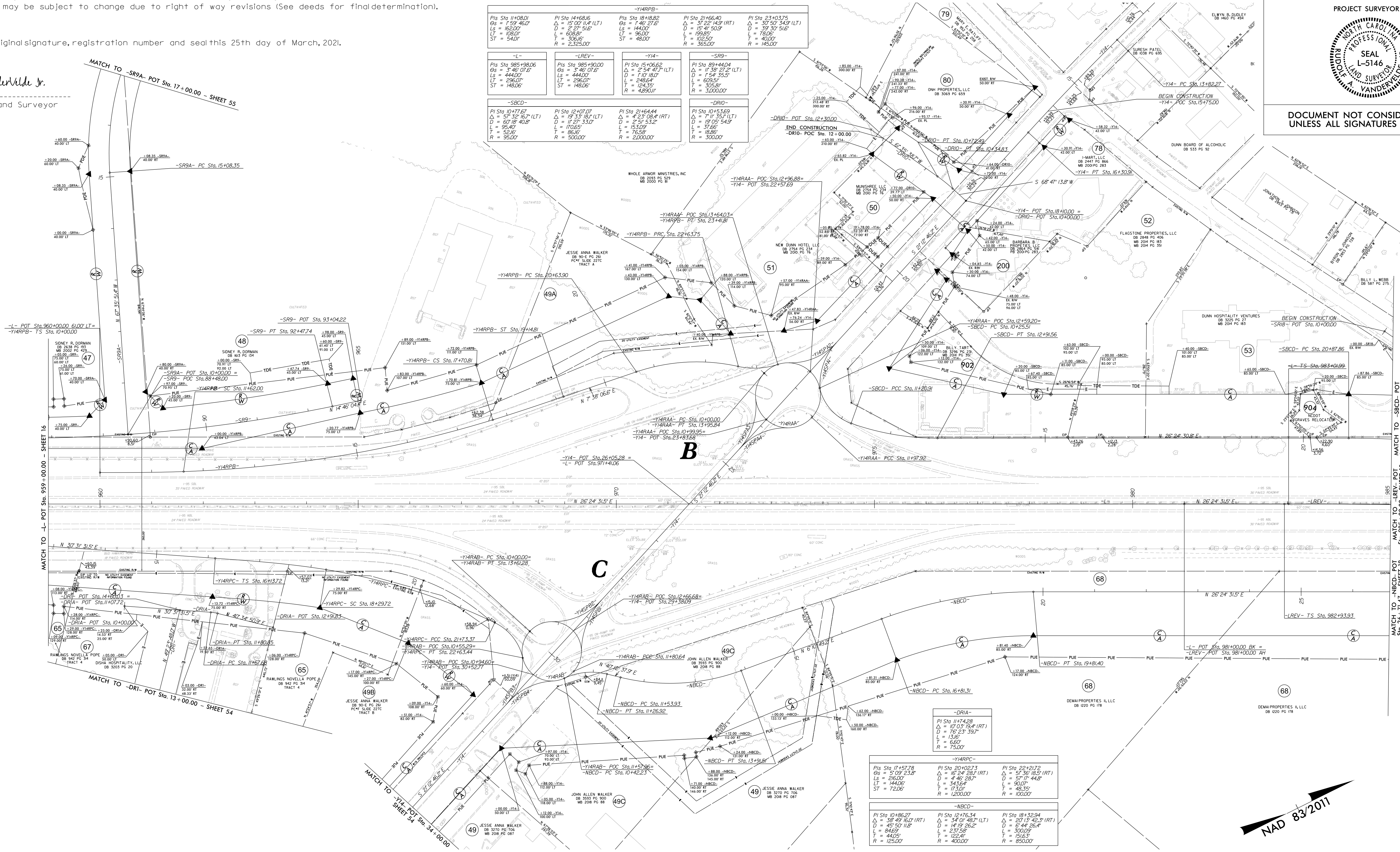
I further certify that the right of way and permanent easement points shown herein and outlined in the tables shown hereon (localized coordinates, station/offset) have been checked and are accurate representations of the right of way and permanent easement points depicted on the corresponding highway plans. I also certify that the right of way and permanent easement points shown herein have been field monumented under my supervision from existing survey control provided by others; that the depicted property data shown herein were surveyed by others; and these monuments denote the right of way and easement boundaries at the time of staking which may be subject to change due to right of way revisions (See deeds for final determination).

Witness my original signature, registration number and seal this 25th day of March, 2021.

Designed by: **Rudolf A. VanderVelde Jr.**
Professional Land Surveyor
PLS # L-5146
3/25/2021

PROJECT REFERENCE NO.	SHEET NO.
L-5878	RW17
Location and Surveys	
 Engineers Planners Surveyors	
PROJECT SURVEYOR 	
DOCUMENT NOT CONSIDERED FINAL UNLESS ALL SIGNATURES COMPLETED	

REVISIONS



-Y14RFB-				
PI Sta 11+08.01 Es = 1'59'46.0" Ls = 165.00' Lt = 108.00' St = 5.420'	PI Sta 14+68.16 Es = 1'57'07.14" (LT) Ls = 164.00' Lt = 108.00' St = 5.420'	PI Sta 18+18.82 Es = 1'46'27.6" Ls = 144.00' Lt = 96.00' St = 4.800'	PI Sta 21+66.40 Es = 1'32'14.9" (RT) Ls = 159.95' Lt = 102.50' St = 3.6500'	PI Sta 23+03.75 Es = 1'37'50.349" (LT) Ls = 139.50' Lt = 78.00' St = 4.000'
-L-				
PI Sta 985+98.06 Es = 3'46'07.6" Ls = 444.00' Lt = 296.00' St = 148.06'	PI Sta 985+90.00 Es = 3'46'07.6" Ls = 444.00' Lt = 296.00' St = 148.06'	PI Sta 15+06.62 Es = 2'54'47.7" (LT) Ls = 144.00' Lt = 248.64' St = 4.8500'	PI Sta 89+44.04 Es = 1'38'27.2" (LT) Ls = 154.35' Lt = 60.50' St = 3.0500'	PI Sta 23+03.75 Es = 1'37'50.349" (LT) Ls = 139.50' Lt = 78.00' St = 4.000'
-SR9-				
PI Sta 12+07.07 Es = 2'32'18.2" (LT) Ls = 60'18'40.8" Lt = 96.82' St = 5.20'	PI Sta 12+07.07 Es = 2'32'18.2" (LT) Ls = 60'18'40.8" Lt = 96.82' St = 5.20'	PI Sta 14+64.44 Es = 2'23'08.4" (RT) Ls = 153.99' Lt = 76.58' St = 2.0000'	PI Sta 10+43.69 Es = 1'38'27.2" (LT) Ls = 154.35' Lt = 37.56' St = 1.886'	PI Sta 23+03.75 Es = 1'37'50.349" (LT) Ls = 139.50' Lt = 78.00' St = 4.000'
-SR9A-				
PI Sta 12+07.07 Es = 2'32'18.2" (LT) Ls = 60'18'40.8" Lt = 96.82' St = 5.20'	PI Sta 12+07.07 Es = 2'32'18.2" (LT) Ls = 60'18'40.8" Lt = 96.82' St = 5.20'	PI Sta 14+64.44 Es = 2'23'08.4" (RT) Ls = 153.99' Lt = 76.58' St = 2.0000'	PI Sta 10+43.69 Es = 1'38'27.2" (LT) Ls = 154.35' Lt = 37.56' St = 1.886'	PI Sta 23+03.75 Es = 1'37'50.349" (LT) Ls = 139.50' Lt = 78.00' St = 4.000'
-DRIO-				
PI Sta 10+43.69 Es = 1'38'27.2" (LT) Ls = 154.35' Lt = 37.56' St = 1.886'	PI Sta 10+43.69 Es = 1'38'27.2" (LT) Ls = 154.35' Lt = 37.56' St = 1.886'	PI Sta 12+07.07 Es = 2'32'18.2" (LT) Ls = 60'18'40.8" Lt = 96.82' St = 5.20'	PI Sta 14+64.44 Es = 2'23'08.4" (RT) Ls = 153.99' Lt = 76.58' St = 2.0000'	PI Sta 23+03.75 Es = 1'37'50.349" (LT) Ls = 139.50' Lt = 78.00' St = 4.000'

-DRIA-		
PI Sta 11+74.28 Es = 1'07'03'19.4" (RT) Ls = 13.86' Lt = 6.60' St = 75.00'		
-Y14RFB-		
PI Sta 17+57.78 Es = 1'59'23.8" Ls = 215.00' Lt = 144.00' St = 72.06'	PI Sta 20+02.73 Es = 1'52'28.1" (RT) Ls = 46'28.0" Lt = 34.30' St = 17.300'	PI Sta 22+01.72 Es = 1'56'18.5" (RT) Ls = 57'19.44.8" Lt = 90.07' St = 48.35'
-NBCD-		
PI Sta 10+86.27 Es = 3'59'11.8" (RT) Ls = 84.60' Lt = 44.05' St = 125.00'	PI Sta 12+176.34 Es = 3'47'01.67" (LT) Ls = 147.19'36.2" Lt = 237.50' St = 122.41'	PI Sta 18+33.84 Es = 3'13'42.3" (RT) Ls = 57'19.26.4" Lt = 48.35' St = 85.000'



NOTES:

- IF FURTHER INFORMATION REGARDING PROJECT CONTROL IS NEEDED, PLEASE CONTACT THE LOCATION AND SURVEYS UNIT.
- PROJECT CONTROL WAS ESTABLISHED USING GNSS, THE GLOBAL NAVIGATION SATELLITE SYSTEM.
- RIGHT OF WAY MONUMENTATION ESTABLISHED FROM FEBRUARY 2020 TO APRIL 2021.

R:\MAR2021\01\19\009524-1-5878.RW Sheets\Drawings\RM Sheets - 3-23-21\1-5878.LS-RW17.dgn