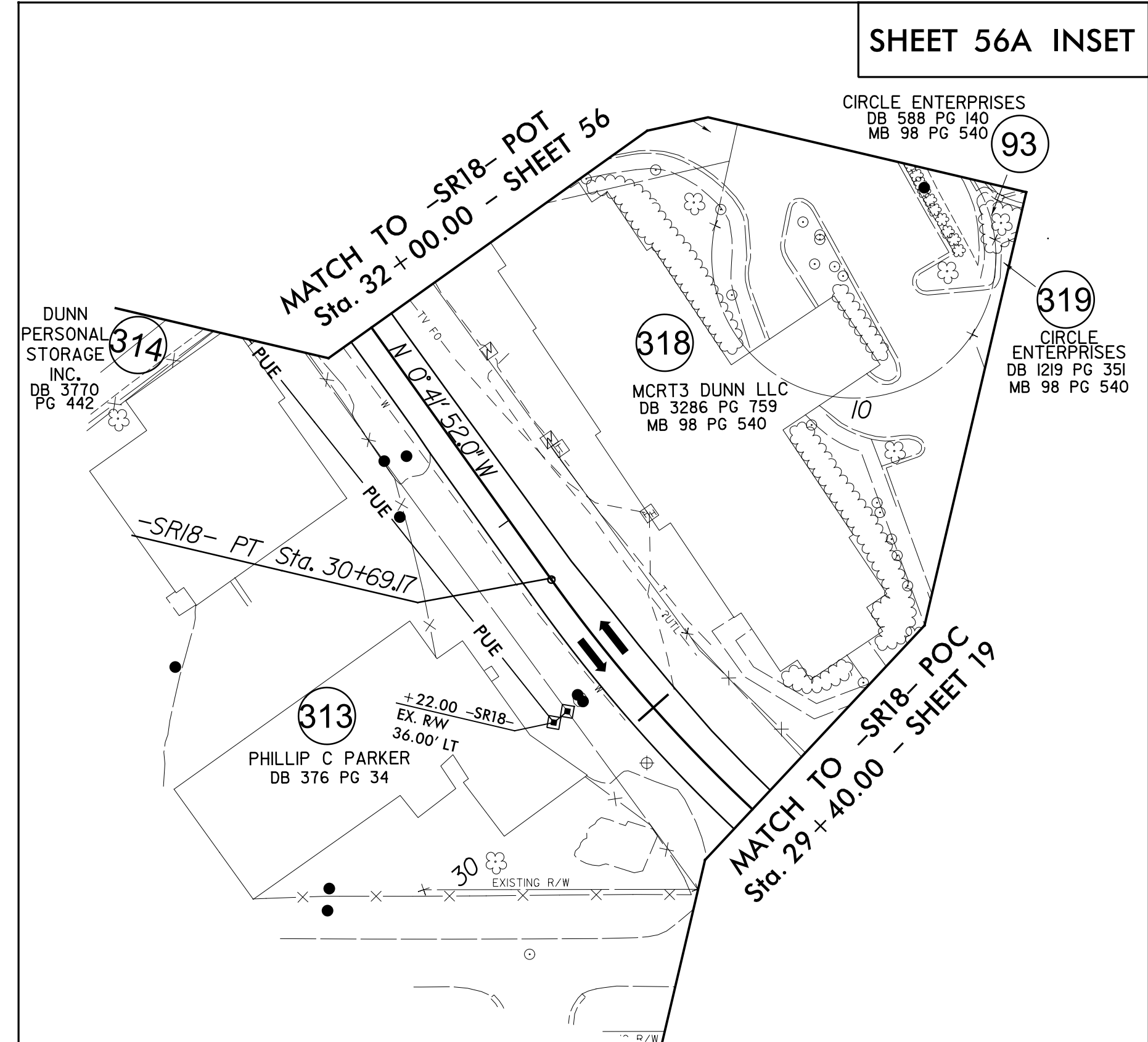
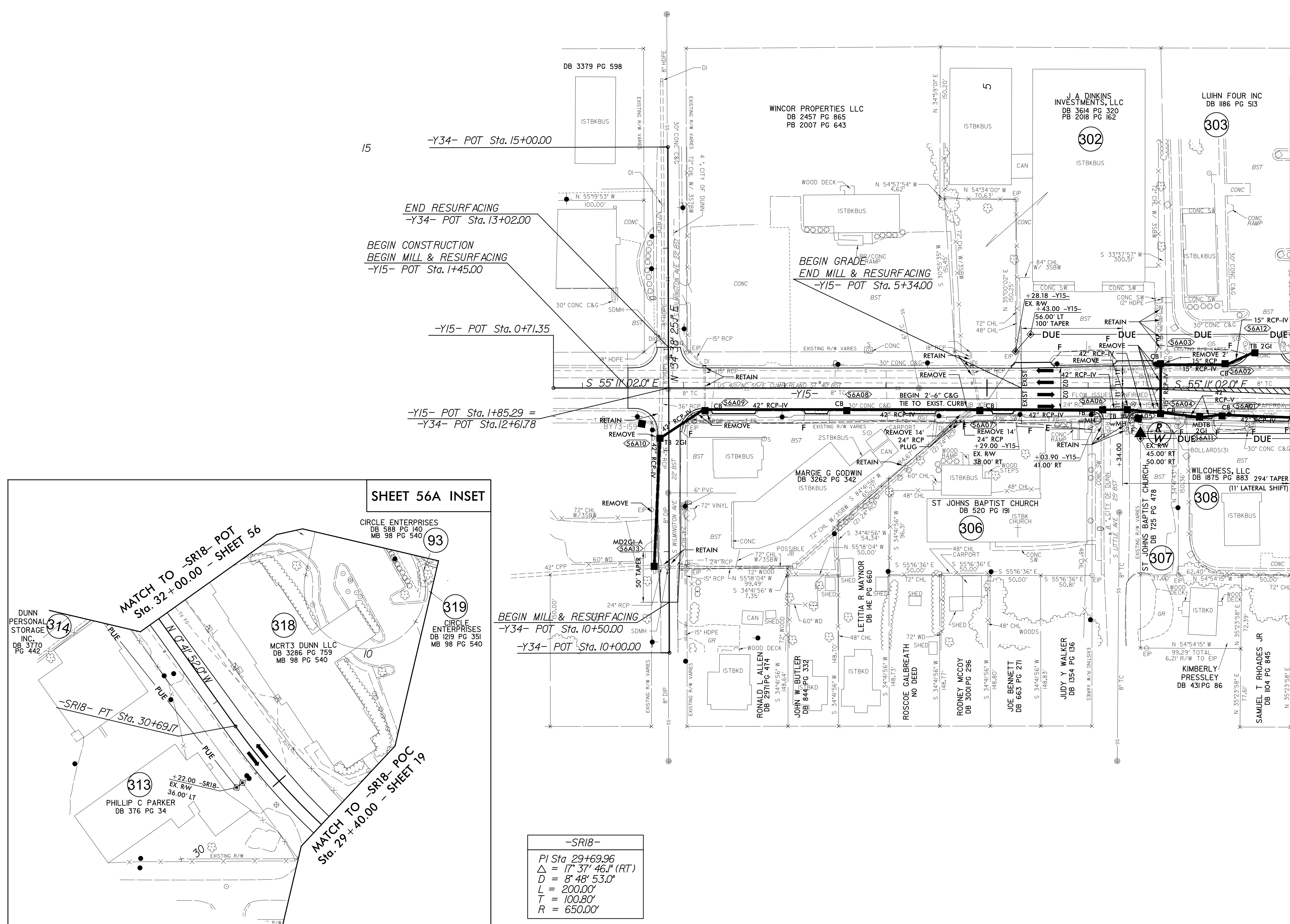
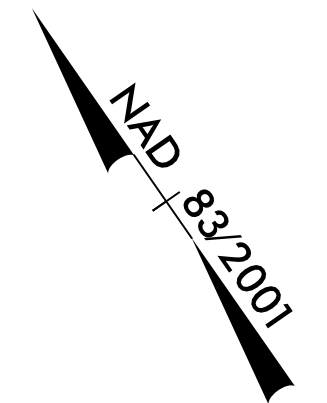


REVISIONS

PROJECT REFERENCE NO. 1-5878	SHEET NO. 56A
RW SHEET NO.	
ROADWAY DESIGN ENGINEER SUSAN C. LANCASTER SEAL 027373	HYDRAULICS ENGINEER JOSHUA G. DALTON SEAL 26971
Susan C. Lancaster 5/13/2021	Joshua G. Dalton 5/12/2021
DOCUMENT NOT CONSIDERED FINAL UNLESS ALL SIGNATURES COMPLETED	
Michael Baker Engineering, Inc. INTERNATIONAL	SUNGATE DESIGN GROUP, P.A.



-SR18-
PI Sta 29+69.96
Δ = 17' 37' 46.1" (RT)
D = 8' 48' 53.0"
L = 200.00'
T = 100.80'
R = 650.00'



MATCH TO -Y15- POT Sta. 8 + 00.00 - SHEET 56

NOTE: DRIVEWAY RADII = 10'  
UNLESS SHOWN OTHERWISE

FOR -Y15- PROFILE SEE SHEET 91  
FOR -SR18- PROFILE SEE SHEET 106