

5/28/2021

PROJECT REFERENCE NO. 1-5878	SHEET NO. 105
ROADWAY DESIGN ENGINEER SUSAN C. LANCASTER SEAL 027373 SUSAN C. LANCASTER	HYDRAULICS ENGINEER JOSHUA G. DIXON PROFESSIONAL SEAL 26971 JOSHUA G. DIXON
5/11/2021	5/11/2021

PIPE HYDRAULIC DATA
2@30" RCP Sta. 19+50 -SR12-

DRAINAGE AREA	= 12.7	AC
DESIGN FREQUENCY	= 25	YRS
DESIGN DISCHARGE	= 40	CFS
DESIGN HW ELEVATION	= 191.5	FT
100 YEAR DISCHARGE	= 46	CFS
100 YEAR HW ELEVATION	= 191.8	FT
OVERTOPPING FREQUENCY	= >55	YRS
OVERTOPPING DISCHARGE	= >55	CFS
OVERTOPPING ELEVATION	= 192.2	FT

-SR12-

PIPE HYDRAULIC DATA
18" RCP Sta. 10+34 -SR12-

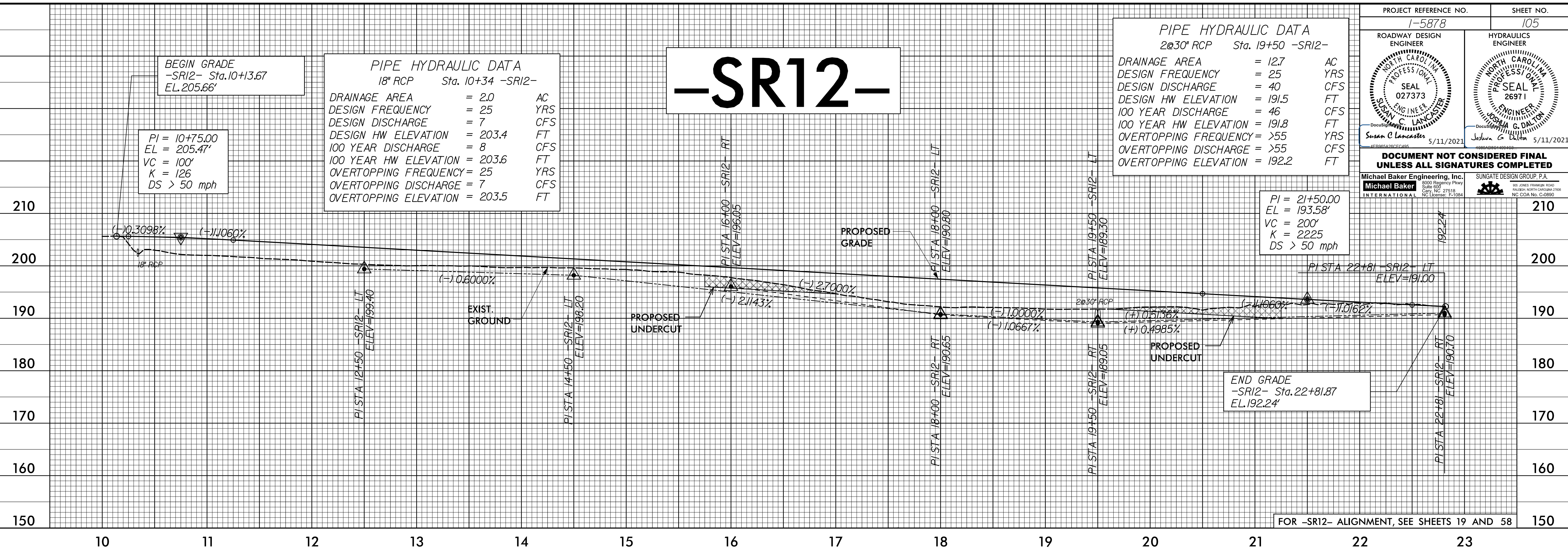
DRAINAGE AREA	= 2.0	AC
DESIGN FREQUENCY	= 25	YRS
DESIGN DISCHARGE	= 7	CFS
DESIGN HW ELEVATION	= 203.4	FT
100 YEAR DISCHARGE	= 8	CFS
100 YEAR HW ELEVATION	= 203.6	FT
OVERTOPPING FREQUENCY	= 25	YRS
OVERTOPPING DISCHARGE	= 7	CFS
OVERTOPPING ELEVATION	= 203.5	FT

BEGIN GRADE
-SR12- Sta. 10+13.67
EL. 205.66'

PI = 10+75.00
EL = 205.47'
VC = 100'
K = 126
DS > 50 mph

PI = 21+50.00
EL = 193.58'
VC = 200'
K = 2225
DS > 50 mph

END GRADE
-SR12- Sta. 22+81.87
EL. 192.24'



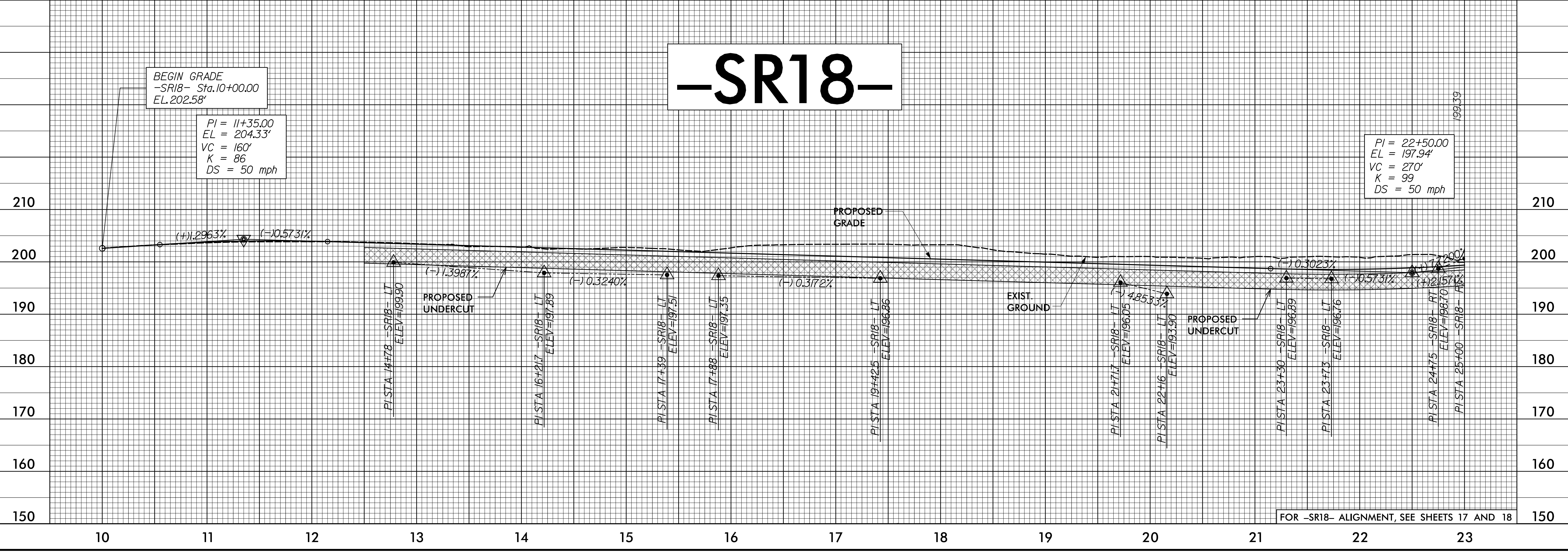
FOR -SR12- ALIGNMENT, SEE SHEETS 19 AND 58

-SR18-

BEGIN GRADE
-SR18- Sta. 10+00.00
EL. 202.58'

PI = 11+35.00
EL = 204.33'
VC = 160'
K = 86
DS = 50 mph

PI = 22+50.00
EL = 197.94'
VC = 270'
K = 99
DS = 50 mph



FOR -SR18- ALIGNMENT, SEE SHEETS 17 AND 18

P:\MAR-2021\18142\1-5878\1-5878B\RDY-pf1-2-Sheets-SR.dgn