

PROJECT REFERENCE NO. <b>1-5986B</b>	SHEET NO. <b>139</b>
ROADWAY DESIGN ENGINEER <b>SEAL 027373</b> SUSAN C. LANCASTER	HYDRAULICS ENGINEER <b>PROFESSIONAL SEAL 26971</b> JOSHUA G. DIXON
5/11/2021	5/11/2021
<b>DOCUMENT NOT CONSIDERED FINAL UNLESS ALL SIGNATURES COMPLETED</b>	
Michael Baker Engineering, Inc. 8000 Regency Park Suite 600 Cary, NC 27518 NC License: E-1084	SUNGATE DESIGN GROUP, P.A. 100 JONES FRANKLIN ROAD RALEIGH, NORTH CAROLINA 27609 NC CDR No. C-0980

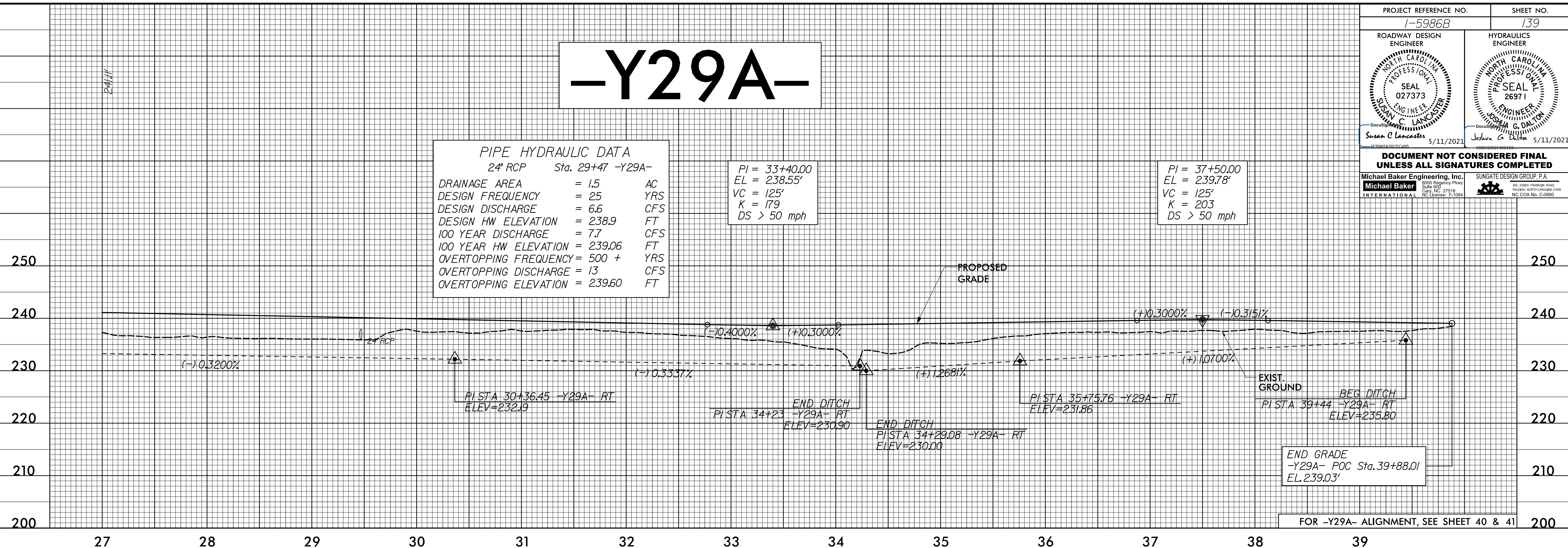
# -Y29A-

**PIPE HYDRAULIC DATA**  
24" RCP Sta. 29+47 -Y29A-

DRAINAGE AREA	= 1.5	AC
DESIGN FREQUENCY	= 25	YRS
DESIGN DISCHARGE	= 6.6	CFS
DESIGN HW ELEVATION	= 238.9	FT
100 YEAR DISCHARGE	= 7.7	CFS
100 YEAR HW ELEVATION	= 239.06	FT
OVERTOPPING FREQUENCY	= 500 +	YRS
OVERTOPPING DISCHARGE	= 13	CFS
OVERTOPPING ELEVATION	= 239.60	FT

PI = 33+40.00  
EL = 238.55'  
VC = 125'  
K = 179  
DS > 50 mph

PI = 37+50.00  
EL = 239.78'  
VC = 125'  
K = 203  
DS > 50 mph

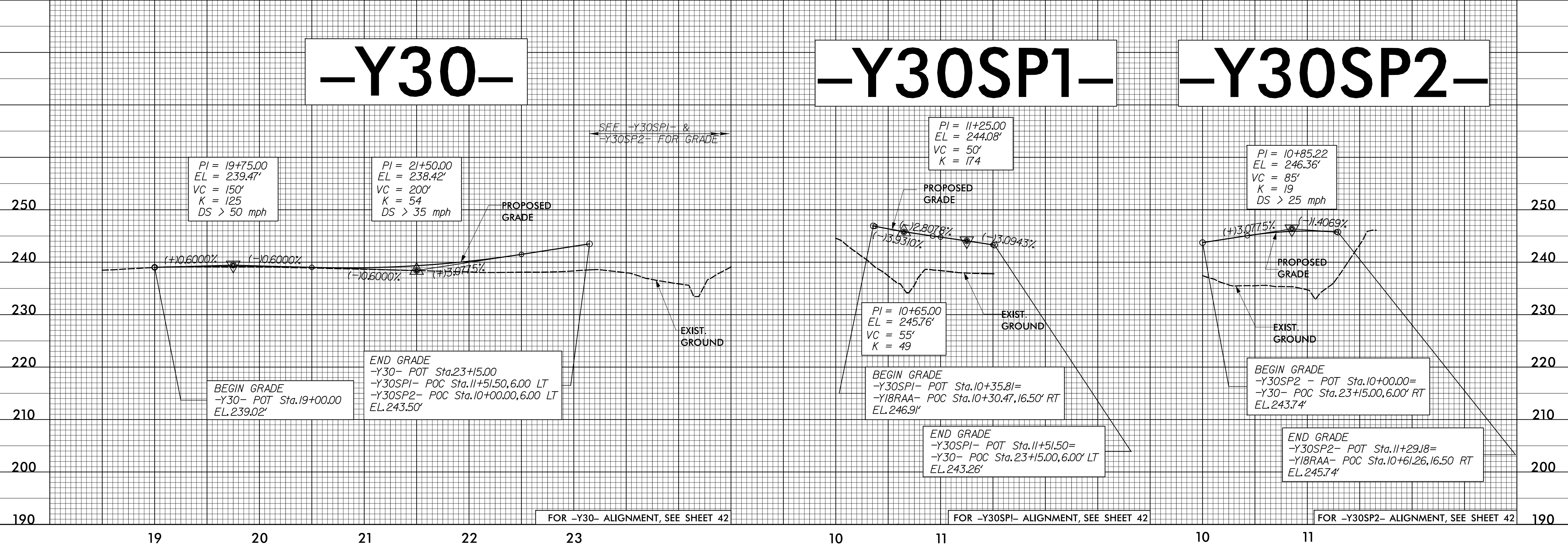


FOR -Y29A- ALIGNMENT, SEE SHEET 40 & 41

# -Y30-

# -Y30SP1-

# -Y30SP2-



FOR -Y30- ALIGNMENT, SEE SHEET 42

FOR -Y30SP1- ALIGNMENT, SEE SHEET 42

FOR -Y30SP2- ALIGNMENT, SEE SHEET 42

PC: APR-2021 09:12 \\s1-f5986B-Rdy-pfl-4-Sheets-Y.dgn