

5/28/2021

PROJECT REFERENCE NO. 1-5883	SHEET NO. 126
ROADWAY DESIGN ENGINEER SUNGATE DESIGN GROUP, P.A. SEAL 027373 SUSAN C. LANCASTER 5/11/2021	HYDRAULICS ENGINEER SUNGATE DESIGN GROUP, P.A. SEAL 26971 JOSHUA G. DIXON 5/11/2021
DOCUMENT NOT CONSIDERED FINAL UNLESS ALL SIGNATURES COMPLETED	
Michael Baker Engineering, Inc. 8000 Regency Parkway Suite 600 Charlotte, NC 27218 NC License: E-11084	SUNGATE DESIGN GROUP, P.A. 605 JONES FRANKLIN ROAD RALEIGH, NORTH CAROLINA 27609 NC CCA No. C-2980

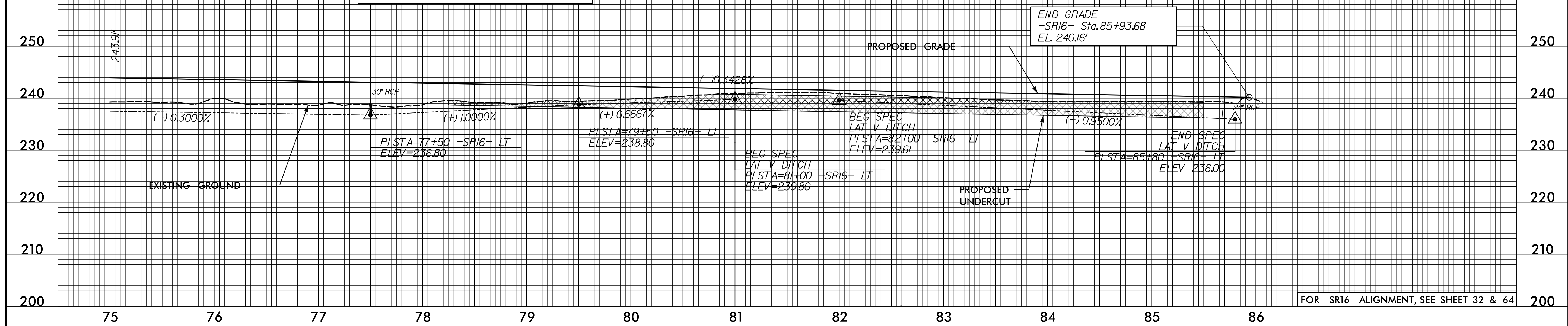
PIPE HYDRAULIC DATA
30" RCP Sta. 77+50 -SR16-

DRAINAGE AREA	= 7.9	AC
DESIGN FREQUENCY	= 25	YRS
DESIGN DISCHARGE	= 25	CFS
DESIGN HW ELEVATION	= 239.4	FT
100 YEAR DISCHARGE	= 28	CFS
100 YEAR HW ELEVATION	= 239.6	FT
OVERTOPPING FREQUENCY	= 500+	YRS
OVERTOPPING DISCHARGE	= 32+	CFS
OVERTOPPING ELEVATION	= 241.5	FT

-SR16-

PIPE HYDRAULIC DATA
24" RCP Sta. 85+69 -SR16-

DRAINAGE AREA	= 35	AC
DESIGN FREQUENCY	= 25	YRS
DESIGN DISCHARGE	= 12	CFS
DESIGN HW ELEVATION	= 238.1	FT
100 YEAR DISCHARGE	= 14	CFS
100 YEAR HW ELEVATION	= 238.3	FT
OVERTOPPING FREQUENCY	= 500+	YRS
OVERTOPPING DISCHARGE	= 16+	CFS
OVERTOPPING ELEVATION	= 240.4	FT



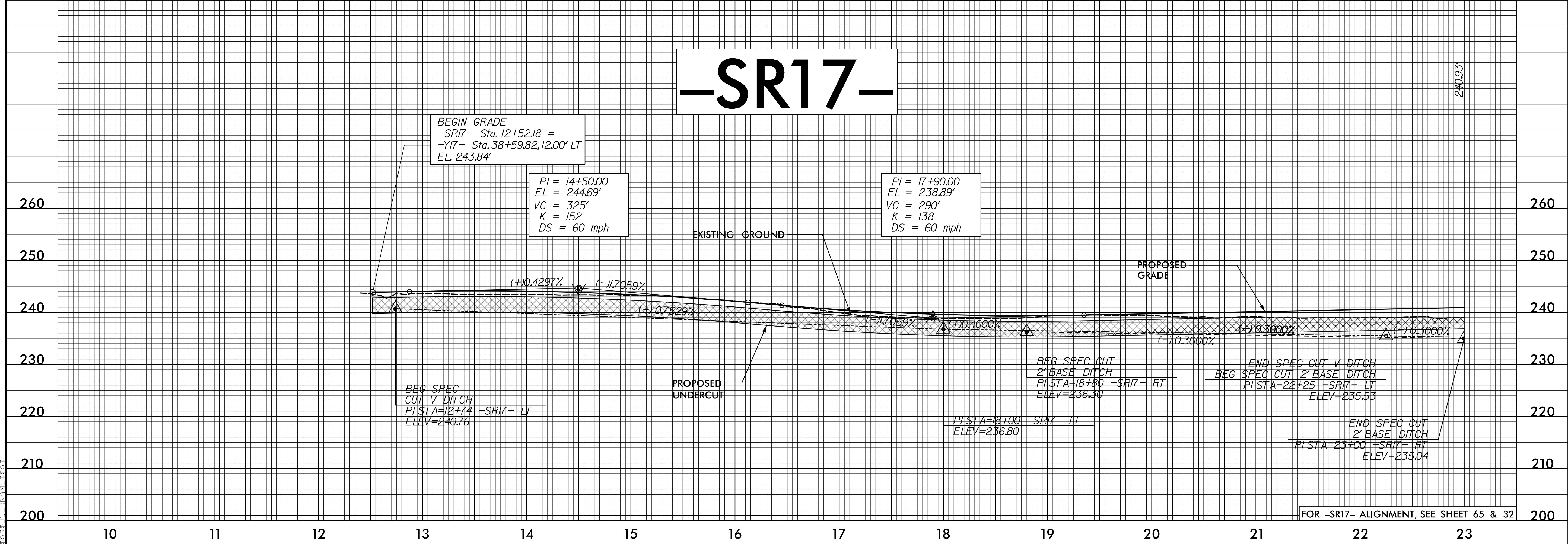
FOR -SR16- ALIGNMENT, SEE SHEET 32 & 64

-SR17-

BEGIN GRADE
-SR17- Sta. 12+52.8 =
-Y17- Sta. 38+59.82, 12.00' LT
EL. 243.84'

PI = 14+50.00
EL = 244.69'
VC = 325'
K = 152
DS = 60 mph

PI = 17+90.00
EL = 238.89'
VC = 290'
K = 138
DS = 60 mph



FOR -SR17- ALIGNMENT, SEE SHEET 65 & 32

12-MAR-2021 09:08
I:\Projects\1-5883\Drawings\1-5883B\RDY\p1_3_Sheets_SR.dgn