

5/28/21

PROJECT REFERENCE NO. 1-5883	SHEET NO. 125
ROADWAY DESIGN ENGINEER SUSAN C. LANCASTER SEAL 027373 SOUTH CAROLINA PROFESSIONAL ENGINEER 5/11/2021	HYDRAULICS ENGINEER JOSHUA G. DIXON SEAL 26971 SOUTH CAROLINA PROFESSIONAL ENGINEER 5/11/2021
DOCUMENT NOT CONSIDERED FINAL UNLESS ALL SIGNATURES COMPLETED	
Michael Baker Engineering, Inc. 8000 Regency Parkway Suite 600 Cary, NC 27519 NC License: E-11084	SUNGATE DESIGN GROUP, P.A. 105 JONES FRANKLIN ROAD RALEIGH, NORTH CAROLINA 27601 NC CCA No. C-2980

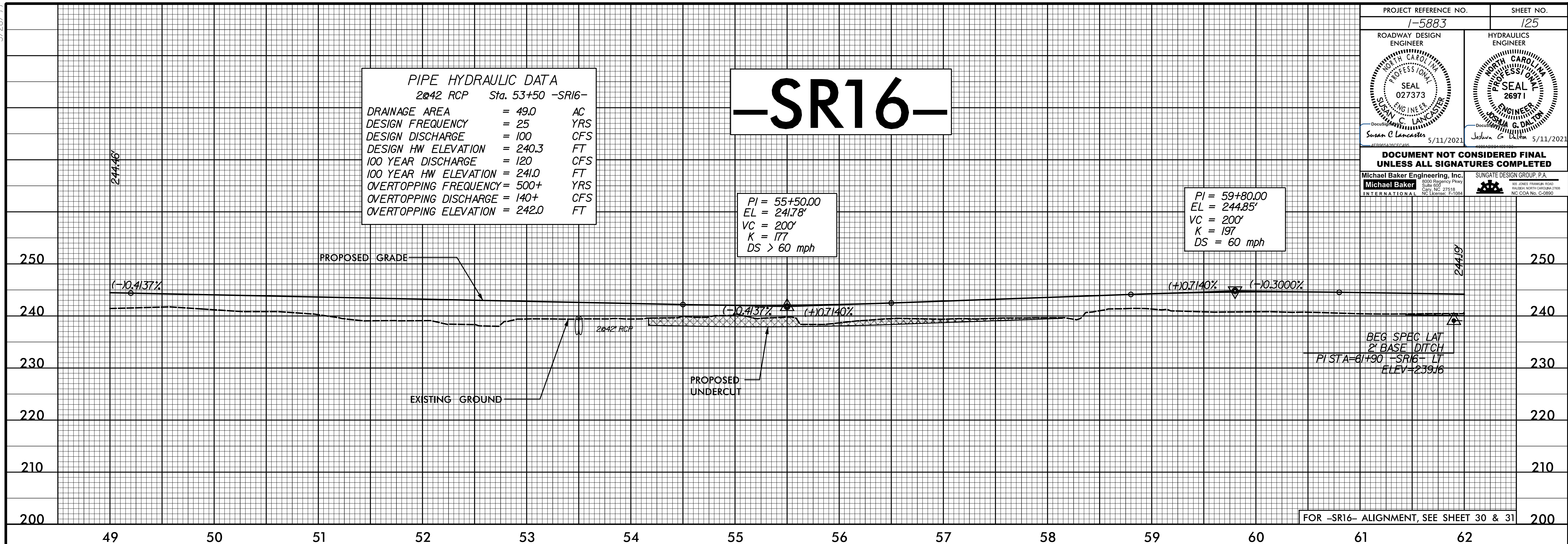
PIPE HYDRAULIC DATA
2@42 RCP Sta. 53+50 -SR16-

DRAINAGE AREA	= 49.0	AC
DESIGN FREQUENCY	= 25	YRS
DESIGN DISCHARGE	= 100	CFS
DESIGN HW ELEVATION	= 240.3	FT
100 YEAR DISCHARGE	= 120	CFS
100 YEAR HW ELEVATION	= 241.0	FT
OVERTOPPING FREQUENCY	= 500+	YRS
OVERTOPPING DISCHARGE	= 140+	CFS
OVERTOPPING ELEVATION	= 242.0	FT

-SR16-

PI = 55+50.00
EL = 241.78'
VC = 200'
K = 177
DS > 60 mph

PI = 59+80.00
EL = 244.85'
VC = 200'
K = 197
DS = 60 mph



FOR -SR16- ALIGNMENT, SEE SHEET 30 & 31

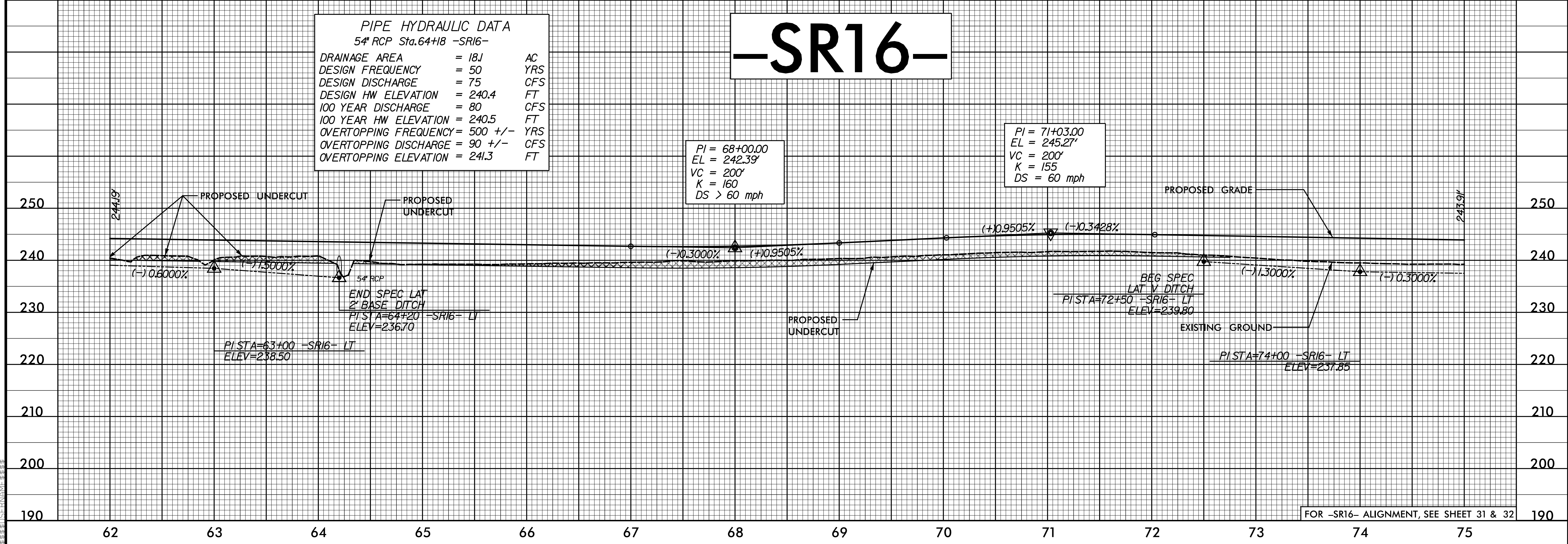
PIPE HYDRAULIC DATA
5" RCP Sta. 64+18 -SR16-

DRAINAGE AREA	= 18.1	AC
DESIGN FREQUENCY	= 50	YRS
DESIGN DISCHARGE	= 75	CFS
DESIGN HW ELEVATION	= 240.4	FT
100 YEAR DISCHARGE	= 80	CFS
100 YEAR HW ELEVATION	= 240.5	FT
OVERTOPPING FREQUENCY	= 500 +/-	YRS
OVERTOPPING DISCHARGE	= 90 +/-	CFS
OVERTOPPING ELEVATION	= 241.3	FT

-SR16-

PI = 68+00.00
EL = 242.39'
VC = 200'
K = 160
DS > 60 mph

PI = 71+03.00
EL = 245.27'
VC = 200'
K = 155
DS = 60 mph



FOR -SR16- ALIGNMENT, SEE SHEET 31 & 32

12-MAR-2021 09:08
I:\Projects\1-5883\1-5883-Roadway\p1_3_Sheets_SR.dgn