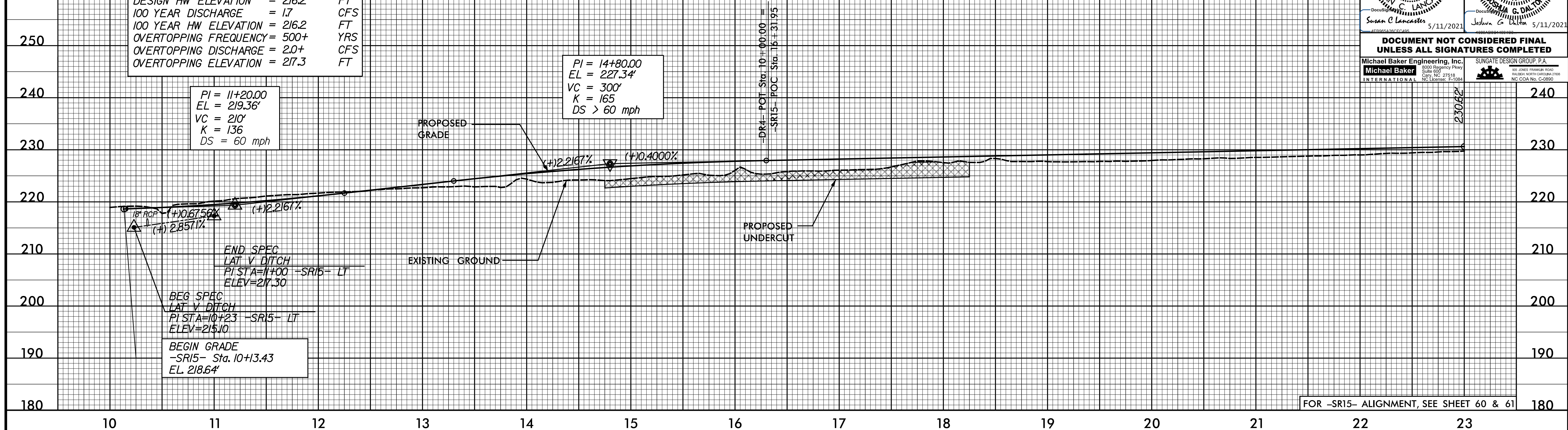


5/28/2021

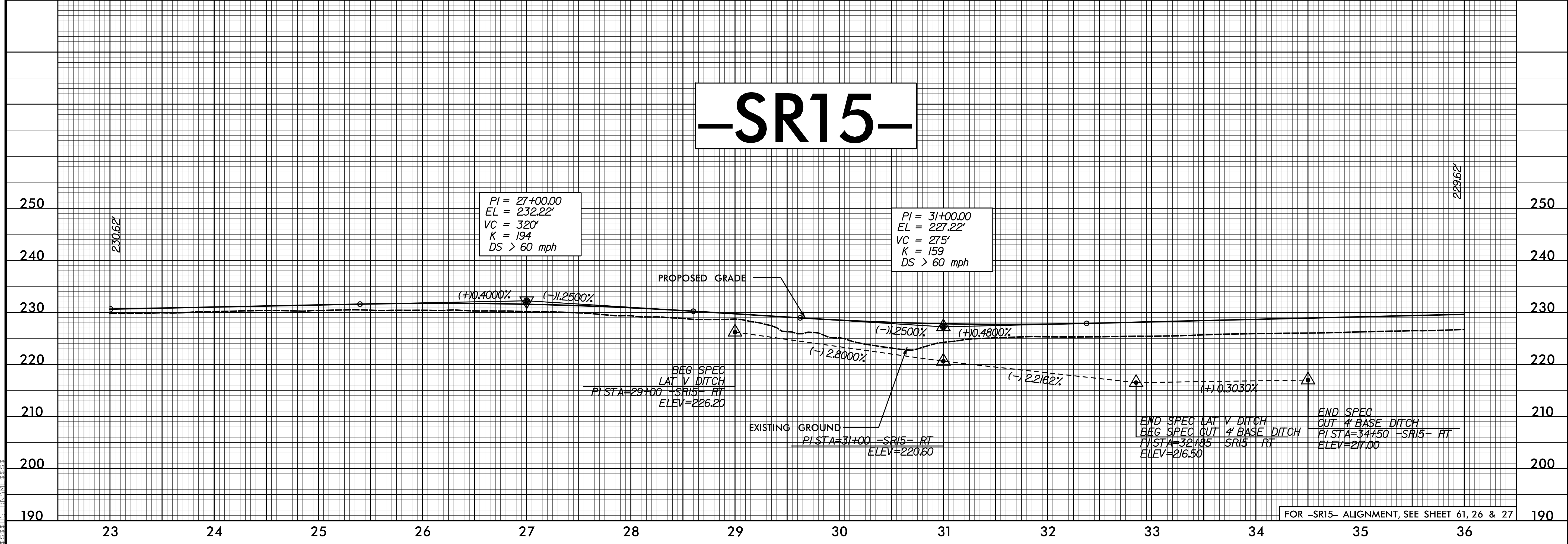
PROJECT REFERENCE NO. <b>1-5883</b>	SHEET NO. <b>120</b>
ROADWAY DESIGN ENGINEER <b>Susan C Lancaster</b> Professional Seal SEAL 027373 SUSAN C. LANCASTER 5/11/2021	HYDRAULICS ENGINEER <b>Joshua G. Dalton</b> Professional Seal SEAL 26971 JOSHUA G. DALTON 5/11/2021
DOCUMENT NOT CONSIDERED FINAL UNLESS ALL SIGNATURES COMPLETED	
Michael Baker Engineering, Inc. 8000 Regency Pkwy Suite 600 Cary, NC 27518 NC License: E-11094	SUNGATE DESIGN GROUP, P.A. 105 Jones Franklin Road Raleigh, North Carolina 27601 NC CCA No. C-2890

**PIPE HYDRAULIC DATA**  
 18" RCP Sta. 10+36 -SR15-  
 DRAINAGE AREA = 0.4 AC  
 DESIGN FREQUENCY = 25 YRS  
 DESIGN DISCHARGE = 1.5 CFS  
 DESIGN HW ELEVATION = 216.2 FT  
 100 YEAR DISCHARGE = 1.7 CFS  
 100 YEAR HW ELEVATION = 216.2 FT  
 OVERTOPPING FREQUENCY = 500+ YRS  
 OVERTOPPING DISCHARGE = 2.0+ CFS  
 OVERTOPPING ELEVATION = 217.3 FT

# -SR15-



# -SR15-



12-MAR-2021 09:08  
L:\5883\1-5883\Drawings\1-5883-SR15-Sheet-SR.dgn

FOR -SR15- ALIGNMENT, SEE SHEET 60 & 61

FOR -SR15- ALIGNMENT, SEE SHEET 61, 26 & 27