

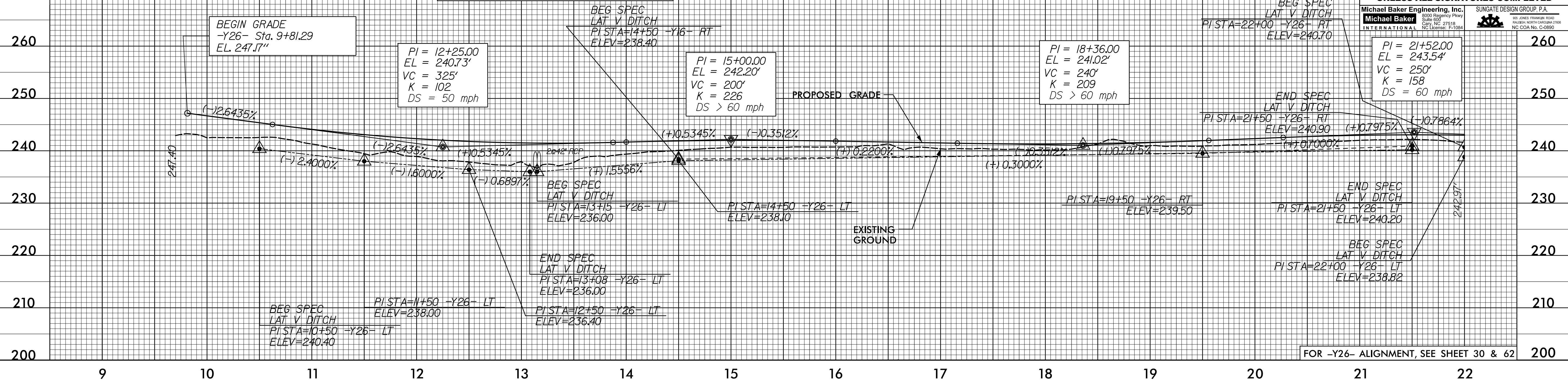
5/28/19

PROJECT REFERENCE NO. 1-5883	SHEET NO. 117
ROADWAY DESIGN ENGINEER SUSAN C. LANCASTER SEAL 027373 ENGINEER SUSAN C. LANCASTER 5/11/2021	HYDRAULICS ENGINEER JOSHUA G. DIXON PROFESSIONAL SEAL 26971 ENGINEER JOSHUA G. DIXON 5/11/2021

PIPE HYDRAULIC DATA
2042" RCP Sta. 13+15 -Y26-

DRAINAGE AREA	= 107	AC
DESIGN FREQUENCY	= 25	YRS
DESIGN DISCHARGE	= 110	CFS
DESIGN HW ELEVATION	= 240.0	FT
100 YEAR DISCHARGE	= 140	CFS
100 YEAR HW ELEVATION	= 240.7	FT
OVERTOPPING FREQUENCY	= >100	YRS
OVERTOPPING DISCHARGE	= >140	CFS
OVERTOPPING ELEVATION	= 241.4	FT

-Y26-



DOCUMENT NOT CONSIDERED FINAL UNLESS ALL SIGNATURES COMPLETED

Michael Baker Engineering, Inc. SUNGATE DESIGN GROUP, P.A.
8000 Regency Park Cary, NC 27518 NC License: E-1084

PI = 21+52.00 EL = 243.54' VC = 250' K = 158 DS = 60 mph	260
250	250
240	240
230	230
220	220
210	210
200	200

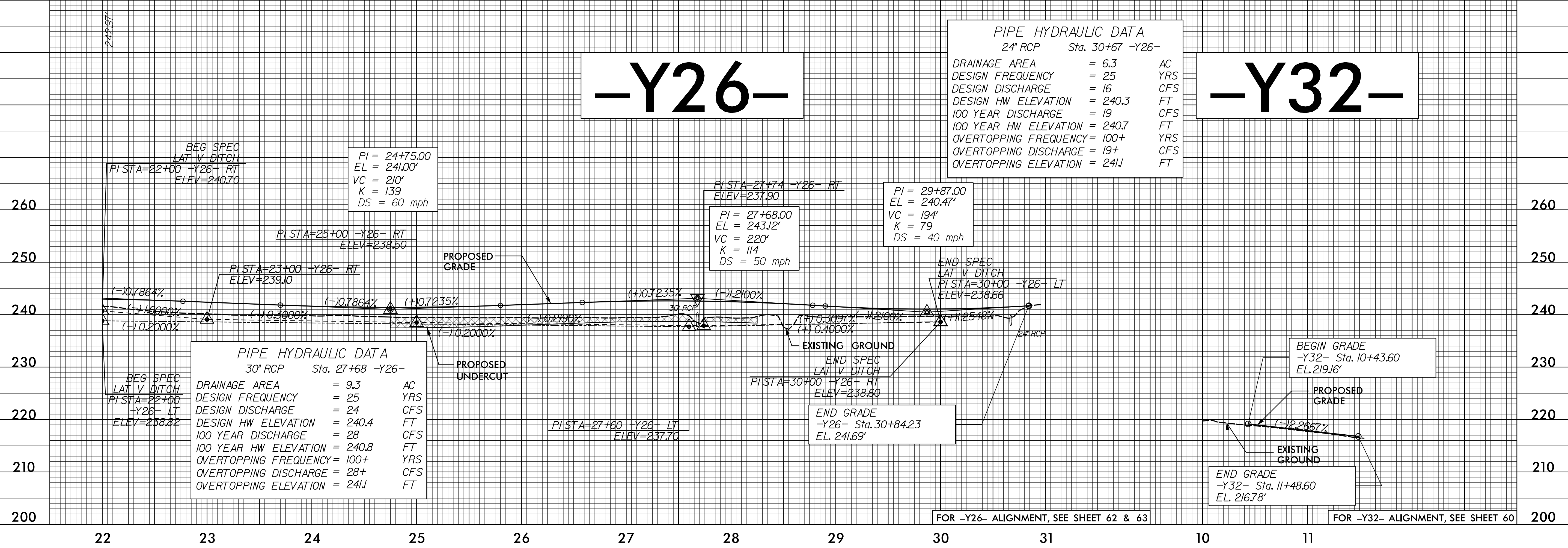
FOR -Y26- ALIGNMENT, SEE SHEET 30 & 62

-Y26-

PIPE HYDRAULIC DATA
24" RCP Sta. 30+67 -Y26-

DRAINAGE AREA	= 6.3	AC
DESIGN FREQUENCY	= 25	YRS
DESIGN DISCHARGE	= 16	CFS
DESIGN HW ELEVATION	= 240.3	FT
100 YEAR DISCHARGE	= 19	CFS
100 YEAR HW ELEVATION	= 240.7	FT
OVERTOPPING FREQUENCY	= 100+	YRS
OVERTOPPING DISCHARGE	= 19+	CFS
OVERTOPPING ELEVATION	= 241	FT

-Y32-



PIPE HYDRAULIC DATA
30" RCP Sta. 27+68 -Y26-

DRAINAGE AREA	= 9.3	AC
DESIGN FREQUENCY	= 25	YRS
DESIGN DISCHARGE	= 24	CFS
DESIGN HW ELEVATION	= 240.4	FT
100 YEAR DISCHARGE	= 28	CFS
100 YEAR HW ELEVATION	= 240.8	FT
OVERTOPPING FREQUENCY	= 100+	YRS
OVERTOPPING DISCHARGE	= 28+	CFS
OVERTOPPING ELEVATION	= 241	FT

BEG GRADE -Y32- Sta. 10+43.60 EL. 219.16'

PROPOSED GRADE

EXISTING GROUND

END GRADE -Y32- Sta. 11+48.60 EL. 216.78'

FOR -Y26- ALIGNMENT, SEE SHEET 62 & 63

FOR -Y32- ALIGNMENT, SEE SHEET 60

12-MAR-2021 09:08 V:\5986B-Rdy-p\F1_3_Sheets-Y.dgn