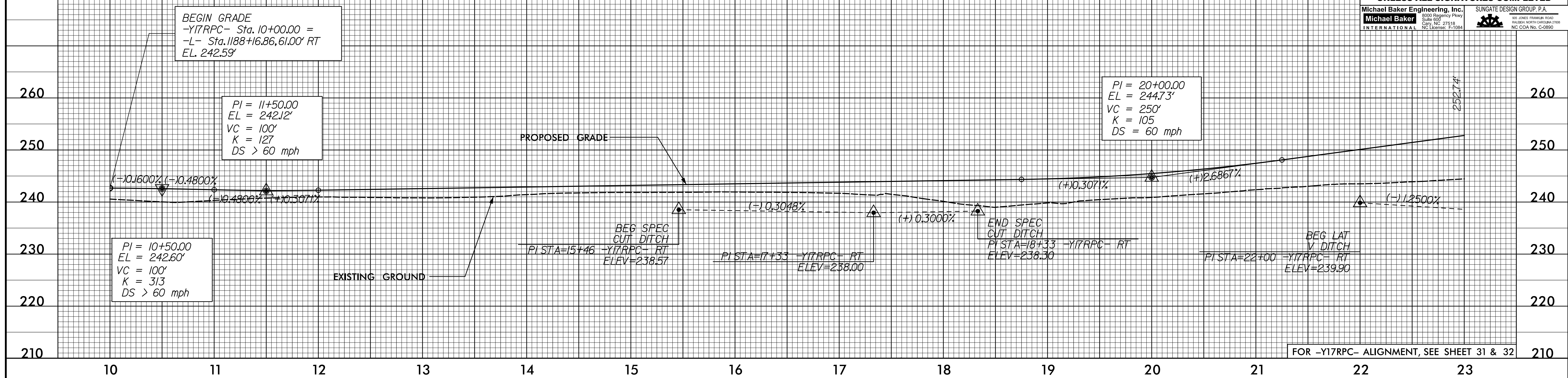


5/28/21

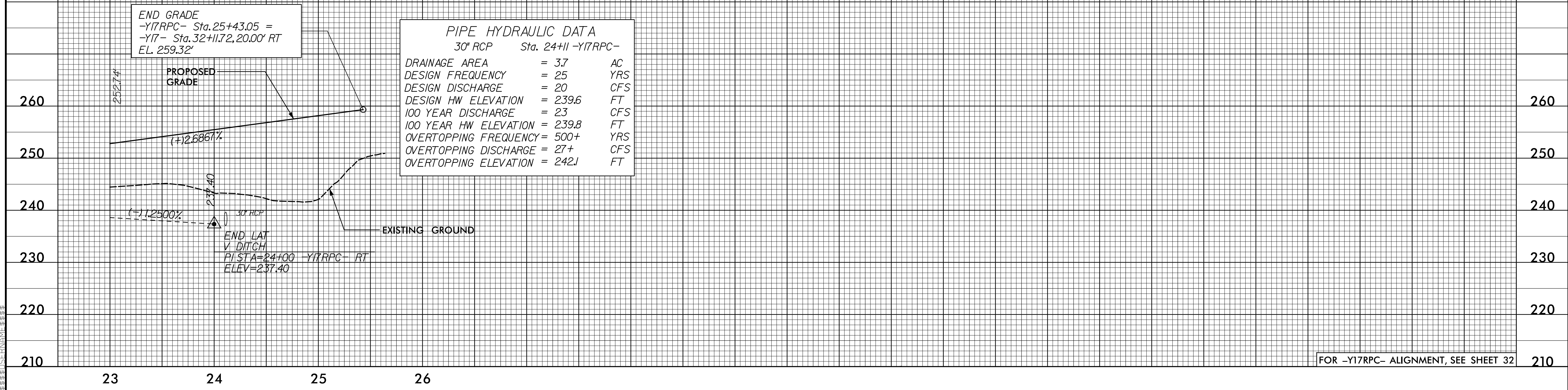
| | |
|---|---|
| PROJECT REFERENCE NO. 1-5883 | SHEET NO. 115 |
| ROADWAY DESIGN ENGINEER SUSAN C. LANCASTER PROFESSIONAL SEAL 027373 5/11/2021 | HYDRAULICS ENGINEER JOSHUA G. DIXON PROFESSIONAL SEAL 26971 5/11/2021 |
| DOCUMENT NOT CONSIDERED FINAL UNLESS ALL SIGNATURES COMPLETED | |
| Michael Baker Engineering, Inc. 8000 Regency Parkway Suite 600 Cary, NC 27519 NC License: E-11084 | SUNGATE DESIGN GROUP, P.A. 605 JONES FRANKLIN ROAD RALEIGH, NORTH CAROLINA 27601 NC CCA No. C-2980 |

-Y17RPC-



FOR -Y17RPC- ALIGNMENT, SEE SHEET 31 & 32

-Y17RPC-



| PIPE HYDRAULIC DATA | |
|-----------------------------|------------|
| 30" RCP Sta. 24+11 -Y17RPC- | |
| DRAINAGE AREA | = 3.7 AC |
| DESIGN FREQUENCY | = 25 YRS |
| DESIGN DISCHARGE | = 20 CFS |
| DESIGN HW ELEVATION | = 239.6 FT |
| 100 YEAR DISCHARGE | = 23 CFS |
| 100 YEAR HW ELEVATION | = 239.8 FT |
| OVERTOPPING FREQUENCY | = 500+ YRS |
| OVERTOPPING DISCHARGE | = 27+ CFS |
| OVERTOPPING ELEVATION | = 242.1 FT |

FOR -Y17RPC- ALIGNMENT, SEE SHEET 32

12-MAR-2021 09:10:00 \\1-5986B-Rdy-pf1_3_Sheets_Y.dgn