

5/28/23

PROJECT REFERENCE NO. 1-5883	SHEET NO. 108
ROADWAY DESIGN ENGINEER SUSAN C. LANCASTER SEAL 027373 ENGINEER SUSAN C. LANCASTER	HYDRAULICS ENGINEER JOSHUA G. DIXON SEAL 26971 ENGINEER JOSHUA G. DIXON
DOCUMENT NOT CONSIDERED FINAL UNLESS ALL SIGNATURES COMPLETED	
Michael Baker Engineering, Inc. 8000 Regency Pkwy Suite 600 Cary, NC 27519 NC License: E-11084	SUNGATE DESIGN GROUP, P.A. 105 JONES FRANKLIN ROAD RALEIGH, NORTH CAROLINA 27601 NC CCA No. C-2980

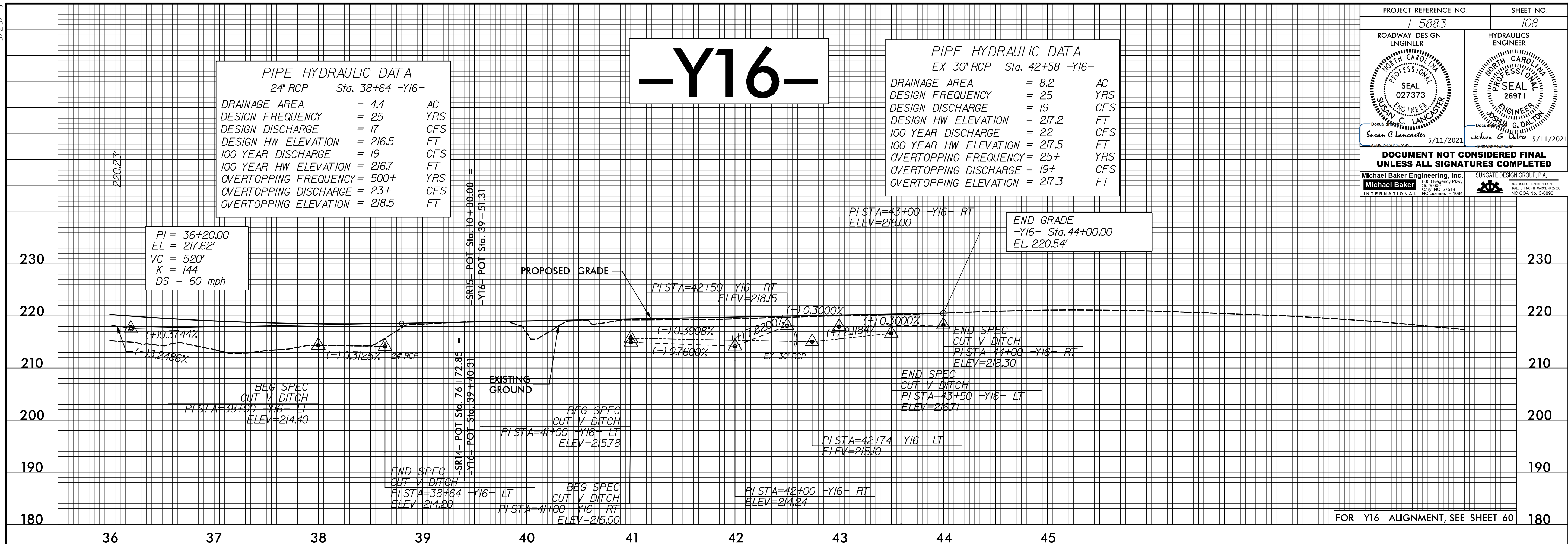
PIPE HYDRAULIC DATA
24" RCP Sta. 38+64 -Y16-

DRAINAGE AREA	= 4.4	AC
DESIGN FREQUENCY	= 25	YRS
DESIGN DISCHARGE	= 17	CFS
DESIGN HW ELEVATION	= 216.5	FT
100 YEAR DISCHARGE	= 19	CFS
100 YEAR HW ELEVATION	= 216.7	FT
OVERTOPPING FREQUENCY	= 500+	YRS
OVERTOPPING DISCHARGE	= 23+	CFS
OVERTOPPING ELEVATION	= 218.5	FT

-Y16-

PIPE HYDRAULIC DATA
EX 30" RCP Sta. 42+58 -Y16-

DRAINAGE AREA	= 8.2	AC
DESIGN FREQUENCY	= 25	YRS
DESIGN DISCHARGE	= 19	CFS
DESIGN HW ELEVATION	= 217.2	FT
100 YEAR DISCHARGE	= 22	CFS
100 YEAR HW ELEVATION	= 217.5	FT
OVERTOPPING FREQUENCY	= 25+	YRS
OVERTOPPING DISCHARGE	= 19+	CFS
OVERTOPPING ELEVATION	= 217.3	FT

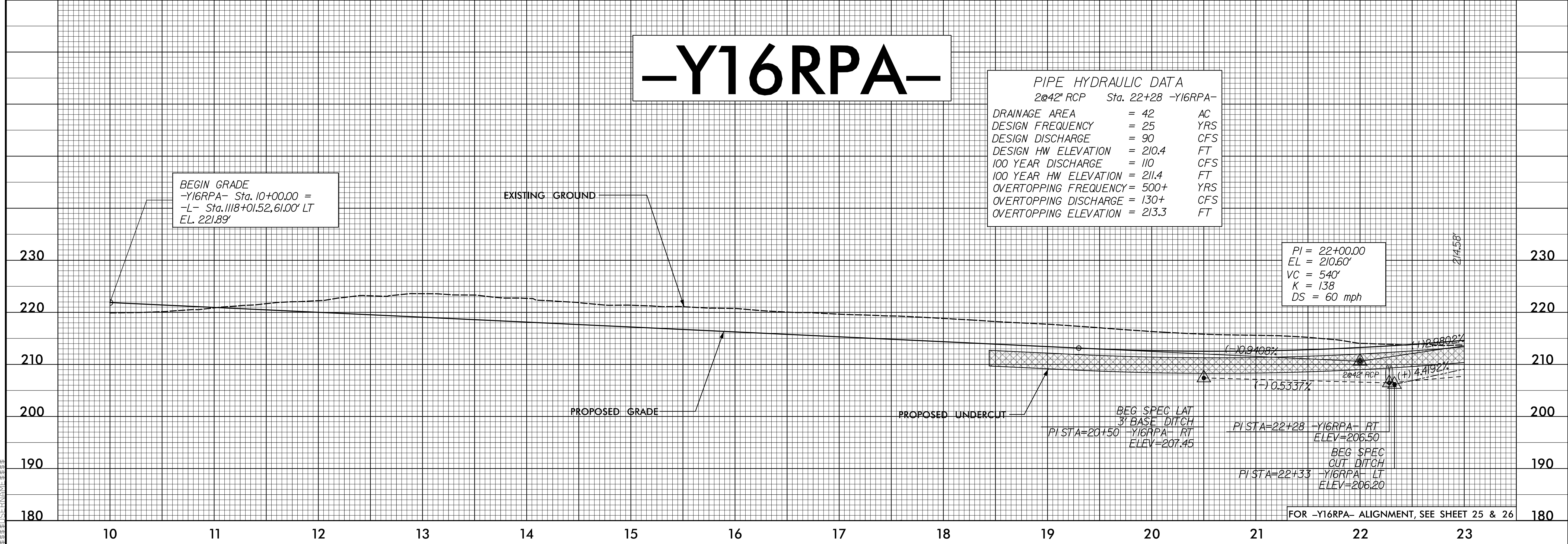


FOR -Y16- ALIGNMENT, SEE SHEET 60

-Y16RPA-

PIPE HYDRAULIC DATA
2@42" RCP Sta. 22+28 -Y16RPA-

DRAINAGE AREA	= 42	AC
DESIGN FREQUENCY	= 25	YRS
DESIGN DISCHARGE	= 90	CFS
DESIGN HW ELEVATION	= 210.4	FT
100 YEAR DISCHARGE	= 110	CFS
100 YEAR HW ELEVATION	= 211.4	FT
OVERTOPPING FREQUENCY	= 500+	YRS
OVERTOPPING DISCHARGE	= 130+	CFS
OVERTOPPING ELEVATION	= 213.3	FT



FOR -Y16RPA- ALIGNMENT, SEE SHEET 25 & 26

12-MAR-2023 09:10 AM C:\Users\jcray\OneDrive\Documents\1-5986B-Rdy_pfl_3_Sheets_Y.dgn