

PROJECT REFERENCE NO. 1-5878	SHEET NO. 102
ROADWAY DESIGN ENGINEER SUSAN C. LANCASTER SEAL 027373 PROFESSIONAL ENGINEER SOUTH CAROLINA 5/11/2021	HYDRAULICS ENGINEER JOSHUA G. DIXON PROFESSIONAL ENGINEER SOUTH CAROLINA 26971 5/11/2021
DOCUMENT NOT CONSIDERED FINAL UNLESS ALL SIGNATURES COMPLETED	
Michael Baker Engineering, Inc. 8000 Regency Park Suite 600 Cary, NC 27518 NC License: F-10884	SUNGATE DESIGN GROUP, P.A. 100 JONES FRANKLIN ROAD RALEIGH, NORTH CAROLINA 27609 NC CDR No. C-2890

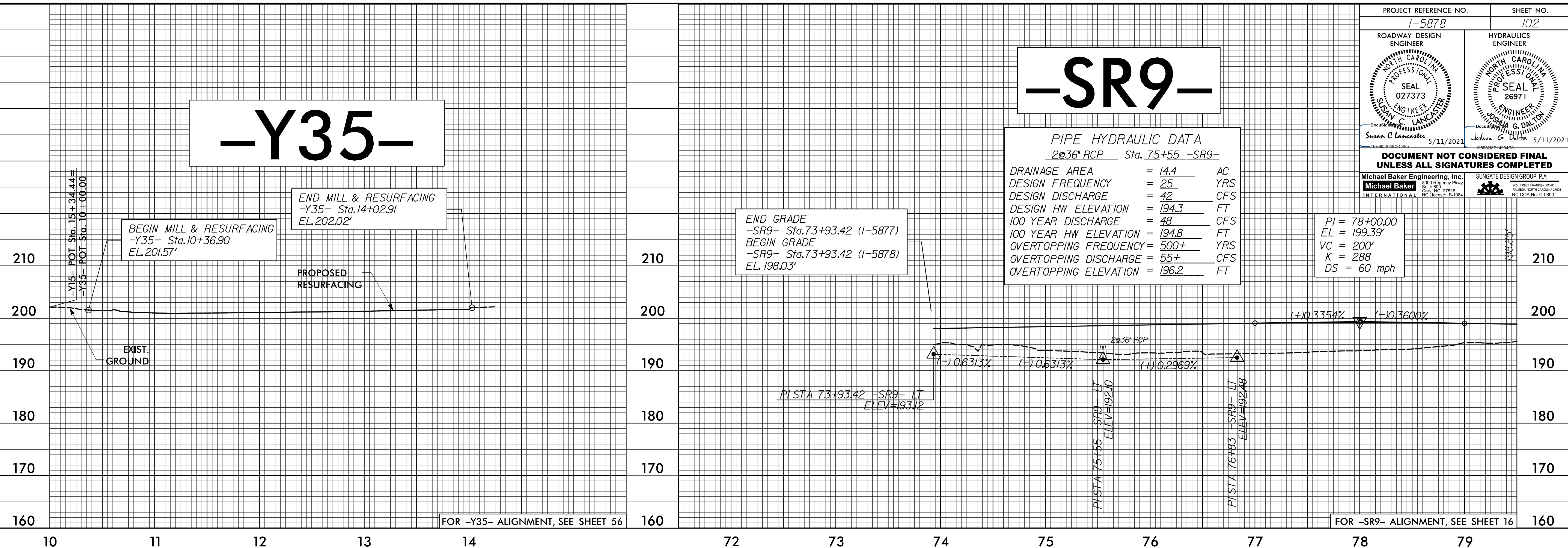
-Y35-

-SR9-

PIPE HYDRAULIC DATA
24" RCP Sta. 75+55 -SR9-

DRAINAGE AREA	= 14.4	AC
DESIGN FREQUENCY	= 25	YRS
DESIGN DISCHARGE	= 42	CFS
DESIGN HW ELEVATION	= 194.3	FT
100 YEAR DISCHARGE	= 48	CFS
100 YEAR HW ELEVATION	= 194.8	FT
OVERTOPPING FREQUENCY	= 500+	YRS
OVERTOPPING DISCHARGE	= 55+	CFS
OVERTOPPING ELEVATION	= 196.2	FT

PI = 78+00.00
EL = 199.39'
VC = 200'
K = 288
DS = 60 mph



FOR -Y35- ALIGNMENT, SEE SHEET 56

FOR -SR9- ALIGNMENT, SEE SHEET 16

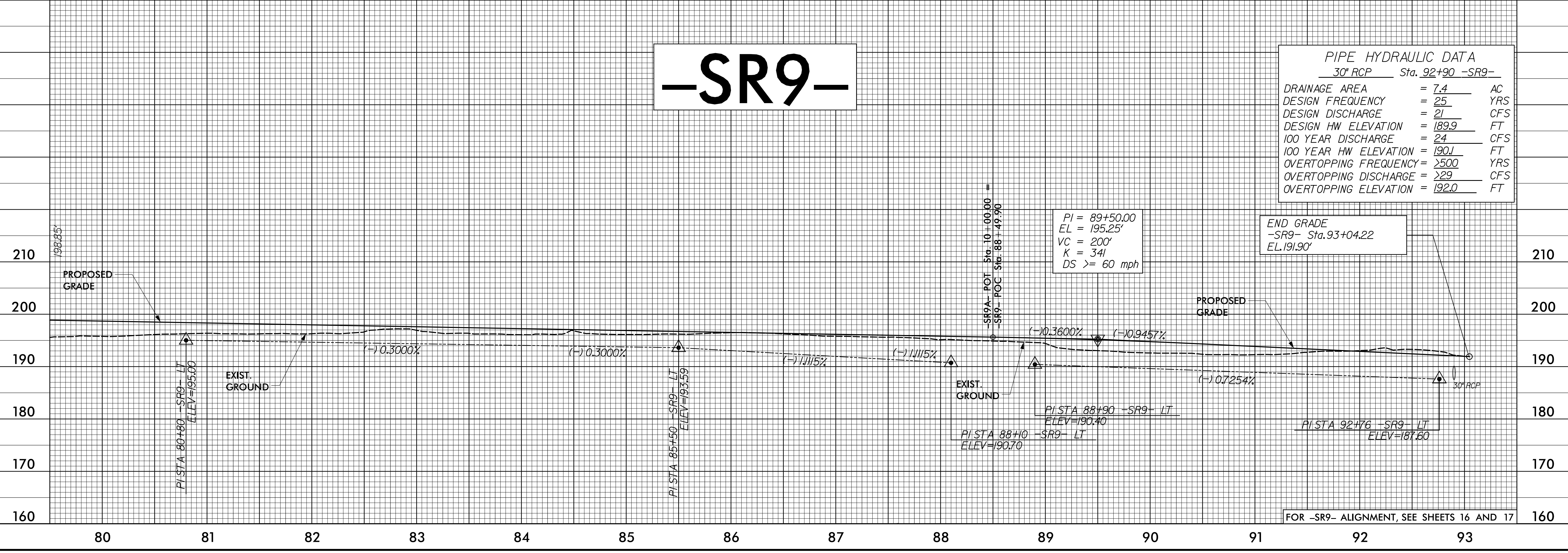
-SR9-

PIPE HYDRAULIC DATA
30" RCP Sta. 92+90 -SR9-

DRAINAGE AREA	= 7.4	AC
DESIGN FREQUENCY	= 25	YRS
DESIGN DISCHARGE	= 21	CFS
DESIGN HW ELEVATION	= 189.9	FT
100 YEAR DISCHARGE	= 24	CFS
100 YEAR HW ELEVATION	= 190.1	FT
OVERTOPPING FREQUENCY	= >500	YRS
OVERTOPPING DISCHARGE	= >29	CFS
OVERTOPPING ELEVATION	= 192.0	FT

PI = 89+50.00
EL = 195.25'
VC = 200'
K = 341
DS >= 60 mph

END GRADE
-SR9- Sta. 93+04.22
EL. 191.90'



FOR -SR9- ALIGNMENT, SEE SHEETS 16 AND 17

5/28/21

P:\MAR-2021\8142\1-5878\B-Redy-pf1-2-Sheets-SR.dgn