

5/28/21

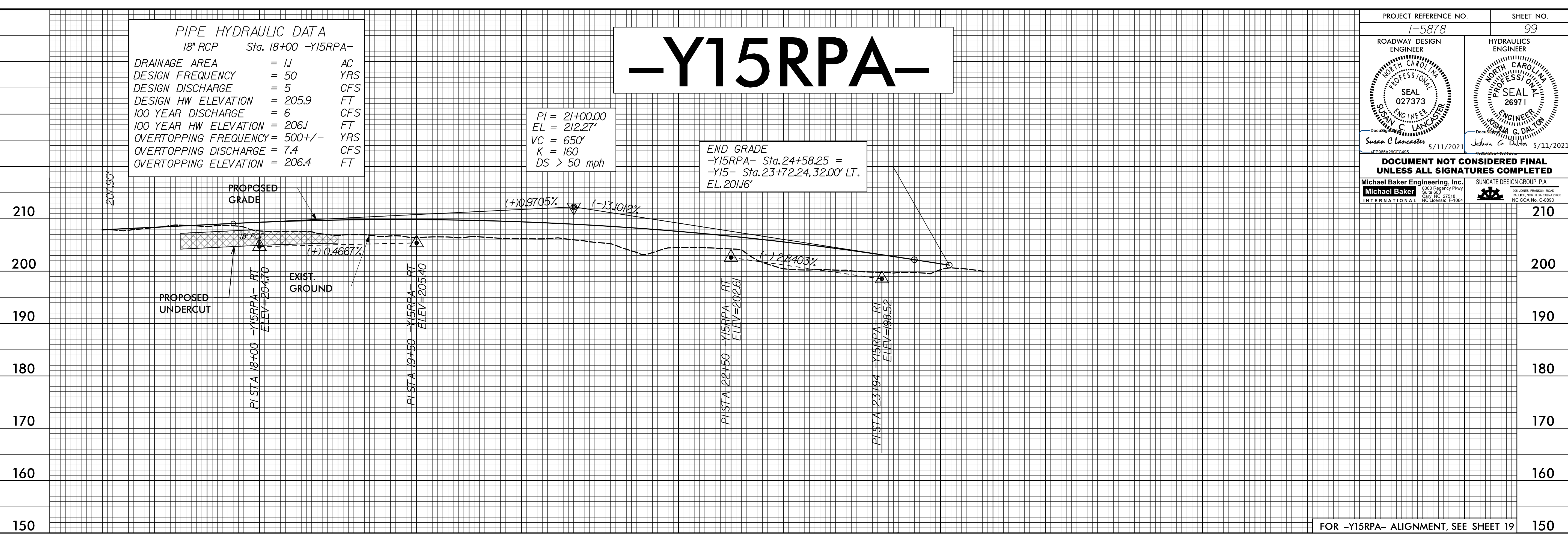
**PIPE HYDRAULIC DATA**  
 18" RCP Sta. 18+00 -Y15RPA-

DRAINAGE AREA	= 11	AC
DESIGN FREQUENCY	= 50	YRS
DESIGN DISCHARGE	= 5	CFS
DESIGN HW ELEVATION	= 205.9	FT
100 YEAR DISCHARGE	= 6	CFS
100 YEAR HW ELEVATION	= 206.1	FT
OVERTOPPING FREQUENCY	= 500+/-	YRS
OVERTOPPING DISCHARGE	= 7.4	CFS
OVERTOPPING ELEVATION	= 206.4	FT

# -Y15RPA-

PI = 21+00.00  
 EL = 212.27'  
 VC = 650'  
 K = 160  
 DS > 50 mph

END GRADE  
 -Y15RPA- Sta. 24+58.25 =  
 -Y15- Sta. 23+72.24, 32.00' LT.  
 EL. 201.16'



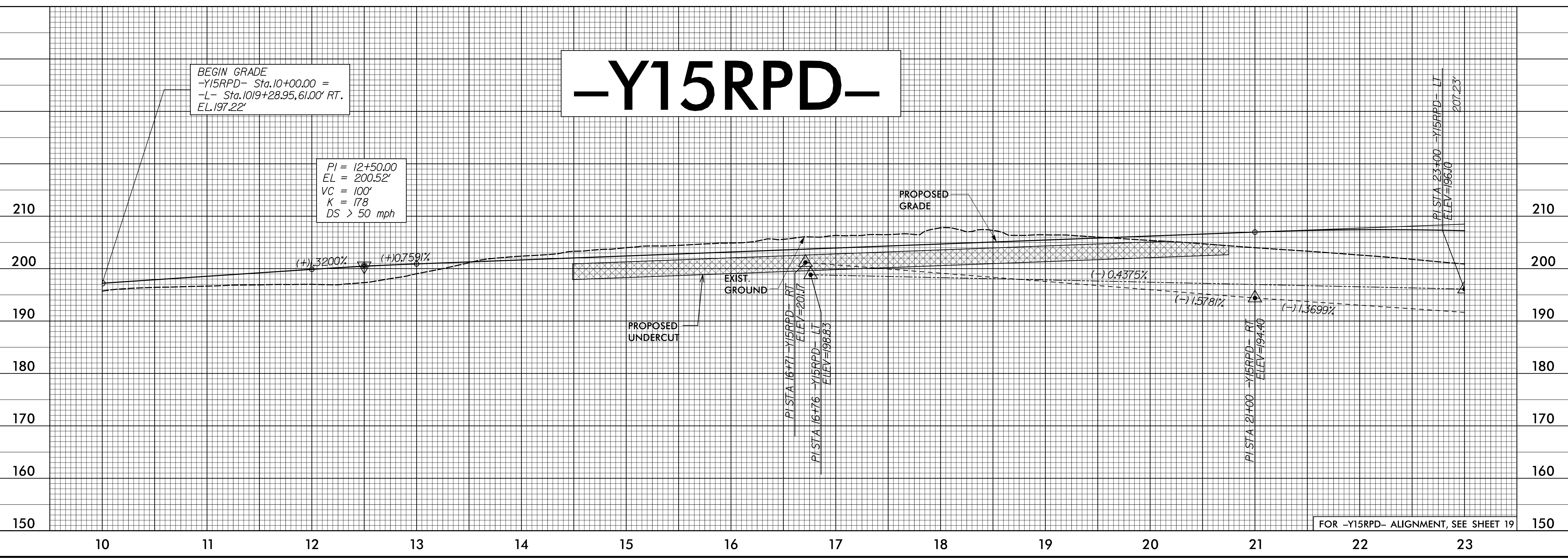
FOR -Y15RPA- ALIGNMENT, SEE SHEET 19

PROJECT REFERENCE NO. 1-5878	SHEET NO. 99
ROADWAY DESIGN ENGINEER SUSAN C. LANCASTER SEAL 027373 NORTH CAROLINA PROFESSIONAL ENGINEER	HYDRAULICS ENGINEER JOSHUA G. DIXON PROFESSIONAL SEAL 26971 NORTH CAROLINA PROFESSIONAL ENGINEER
5/11/2021	5/11/2021
<b>DOCUMENT NOT CONSIDERED FINAL UNLESS ALL SIGNATURES COMPLETED</b>	
Michael Baker Engineering, Inc. 8000 Regency Park Suite 600 Cary, NC 27518 NC License: F-10884	SUNGATE DESIGN GROUP, P.A. 800 JONES FRANKLIN ROAD RALEIGH, NORTH CAROLINA 27606 NC License: S-08900

# -Y15RPD-

BEGIN GRADE  
 -Y15RPD- Sta. 10+00.00 =  
 -L- Sta. 1019+28.95, 61.00' RT.  
 EL. 197.22'

PI = 12+50.00  
 EL = 200.52'  
 VC = 100'  
 K = 178  
 DS > 50 mph



FOR -Y15RPD- ALIGNMENT, SEE SHEET 19

I:\MAR-2021\08-159\1-F5986B-Rdy-pf1.2\_Sheets-Y.dgn  
 5/28/21 10:58 AM  
 100%