

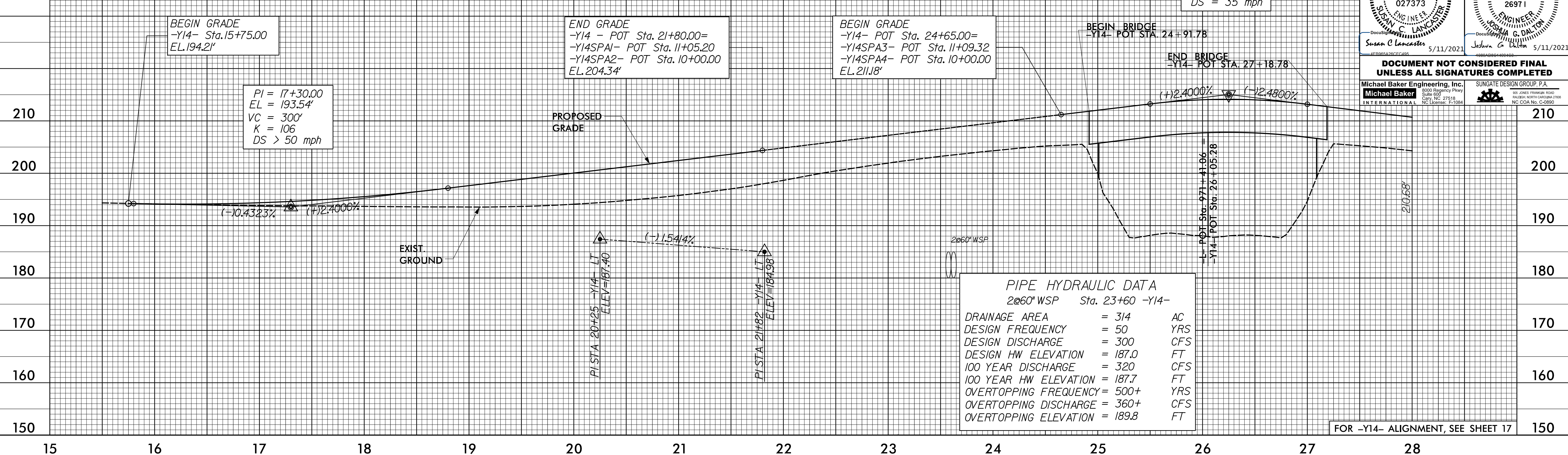
5/28/2019

-Y14-

PROJECT REFERENCE NO. 1-5878	SHEET NO. 90
ROADWAY DESIGN ENGINEER SUSAN C. LANCASTER SEAL 027373 5/11/2021	HYDRAULICS ENGINEER JOSHUA G. DIXON PROFESSIONAL SEAL 26971 5/11/2021

DOCUMENT NOT CONSIDERED FINAL UNLESS ALL SIGNATURES COMPLETED

Michael Baker Engineering, Inc. 8000 Regency Park Suite 600 Cary, NC 27518 NC License: F-10884	SUNGATE DESIGN GROUP, P.A. 100 JONES FRANKLIN ROAD RALEIGH, NORTH CAROLINA 27601 NC CDR No. C-2880
--	---

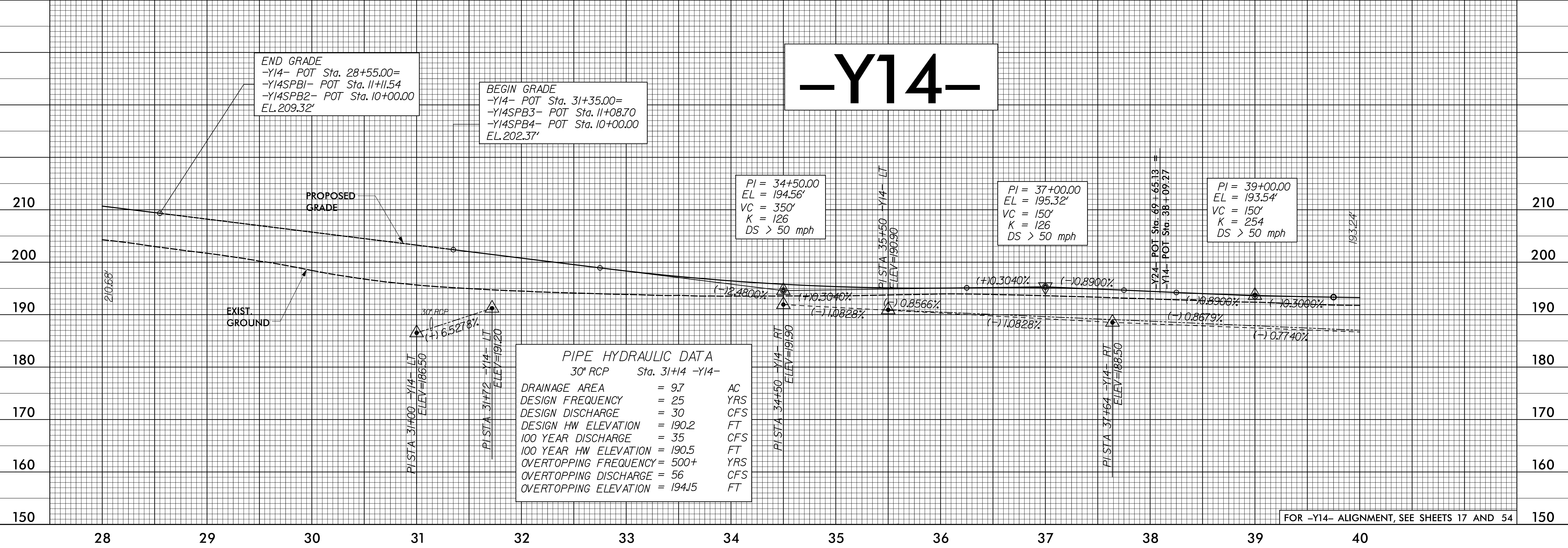


PIPE HYDRAULIC DATA
2060" WSP Sta. 23+60 -Y14-

DRAINAGE AREA	= 314	AC
DESIGN FREQUENCY	= 50	YRS
DESIGN DISCHARGE	= 300	CFS
DESIGN HW ELEVATION	= 187.0	FT
100 YEAR DISCHARGE	= 320	CFS
100 YEAR HW ELEVATION	= 187.7	FT
OVERTOPPING FREQUENCY	= 500+	YRS
OVERTOPPING DISCHARGE	= 360+	CFS
OVERTOPPING ELEVATION	= 189.8	FT

FOR -Y14- ALIGNMENT, SEE SHEET 17

-Y14-



PIPE HYDRAULIC DATA
30" RCP Sta. 31+14 -Y14-

DRAINAGE AREA	= 9.7	AC
DESIGN FREQUENCY	= 25	YRS
DESIGN DISCHARGE	= 30	CFS
DESIGN HW ELEVATION	= 190.2	FT
100 YEAR DISCHARGE	= 35	CFS
100 YEAR HW ELEVATION	= 190.5	FT
OVERTOPPING FREQUENCY	= 500+	YRS
OVERTOPPING DISCHARGE	= 56	CFS
OVERTOPPING ELEVATION	= 194.15	FT

FOR -Y14- ALIGNMENT, SEE SHEETS 17 AND 54

12-MAR-2019 08:59 \\f5986B-Rdy-pfl-2-Sheets-Y.dgn