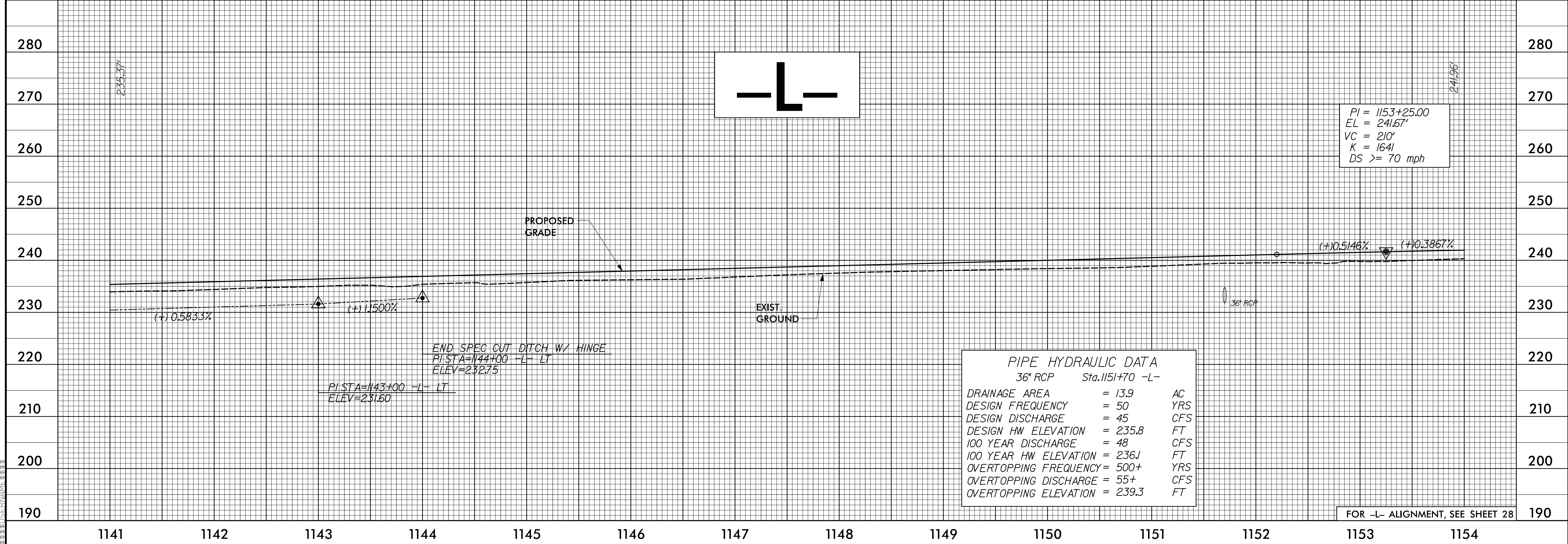
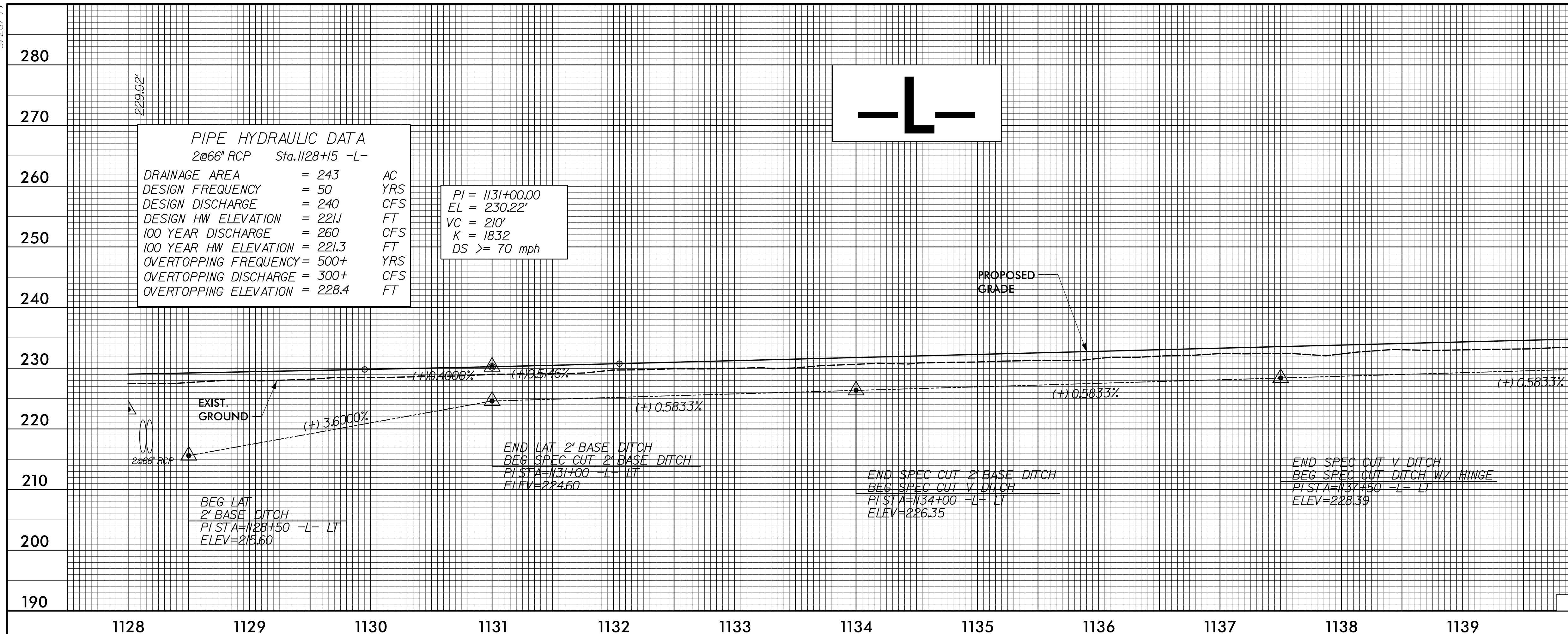


5/28/21

PROJECT REFERENCE NO. 1-5883	SHEET NO. 78
ROADWAY DESIGN ENGINEER SUSAN C. LANCASTER SEAL 027373 ENGINEER SUSAN C. LANCASTER 5/11/2021	HYDRAULICS ENGINEER JOSHUA G. DIXON SEAL 26971 ENGINEER JOSHUA G. DIXON 5/11/2021
DOCUMENT NOT CONSIDERED FINAL UNLESS ALL SIGNATURES COMPLETED	
Michael Baker Engineering, Inc. INTERNATIONAL	SUNGATE DESIGN GROUP, P.A.



PIPE HYDRAULIC DATA
2066" RCP Sta. 1128+15 -L-

DRAINAGE AREA	= 243	AC
DESIGN FREQUENCY	= 50	YRS
DESIGN DISCHARGE	= 240	CFS
DESIGN HW ELEVATION	= 221.1	FT
100 YEAR DISCHARGE	= 260	CFS
100 YEAR HW ELEVATION	= 221.3	FT
OVERTOPPING FREQUENCY	= 500+	YRS
OVERTOPPING DISCHARGE	= 300+	CFS
OVERTOPPING ELEVATION	= 228.4	FT

PI = 1131+00.00
EL = 230.22'
VC = 210'
K = 1832
DS >= 70 mph

PI = 1153+25.00
EL = 241.67'
VC = 210'
K = 1641
DS >= 70 mph

PIPE HYDRAULIC DATA
36" RCP Sta. 1151+70 -L-

DRAINAGE AREA	= 13.9	AC
DESIGN FREQUENCY	= 50	YRS
DESIGN DISCHARGE	= 45	CFS
DESIGN HW ELEVATION	= 235.8	FT
100 YEAR DISCHARGE	= 48	CFS
100 YEAR HW ELEVATION	= 236.1	FT
OVERTOPPING FREQUENCY	= 500+	YRS
OVERTOPPING DISCHARGE	= 55+	CFS
OVERTOPPING ELEVATION	= 239.3	FT

12-MAR-2021 09:10:08 \\s1-f5886B-Rdy-p1-Sheets-L.dgn