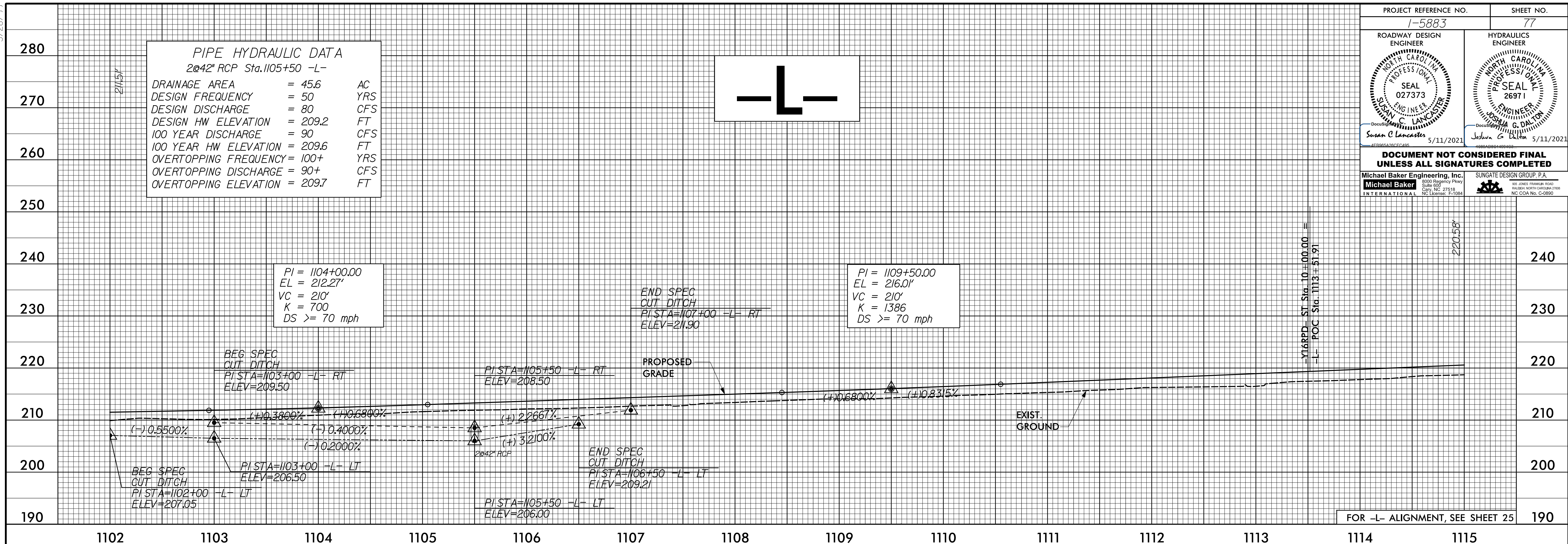
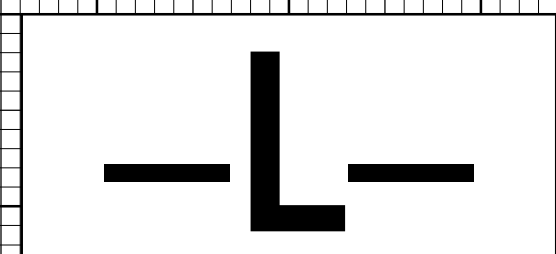


5/28/21

PROJECT REFERENCE NO. 1-5883	SHEET NO. 77
ROADWAY DESIGN ENGINEER SUSAN C. LANCASTER SEAL 027373 ENGINEER SUSAN C. LANCASTER	HYDRAULICS ENGINEER JOSHUA G. DIXON SEAL 2697 ENGINEER JOSHUA G. DIXON
5/11/2021	5/11/2021
DOCUMENT NOT CONSIDERED FINAL UNLESS ALL SIGNATURES COMPLETED	
Michael Baker Engineering, Inc. 8000 Regency Pkwy Suite 600 Cary, NC 27518 NC License: E-11884	SUNGATE DESIGN GROUP, P.A. 605 JONES FRANKLIN ROAD RALEIGH, NORTH CAROLINA 27609 NC CCA No. C-2980

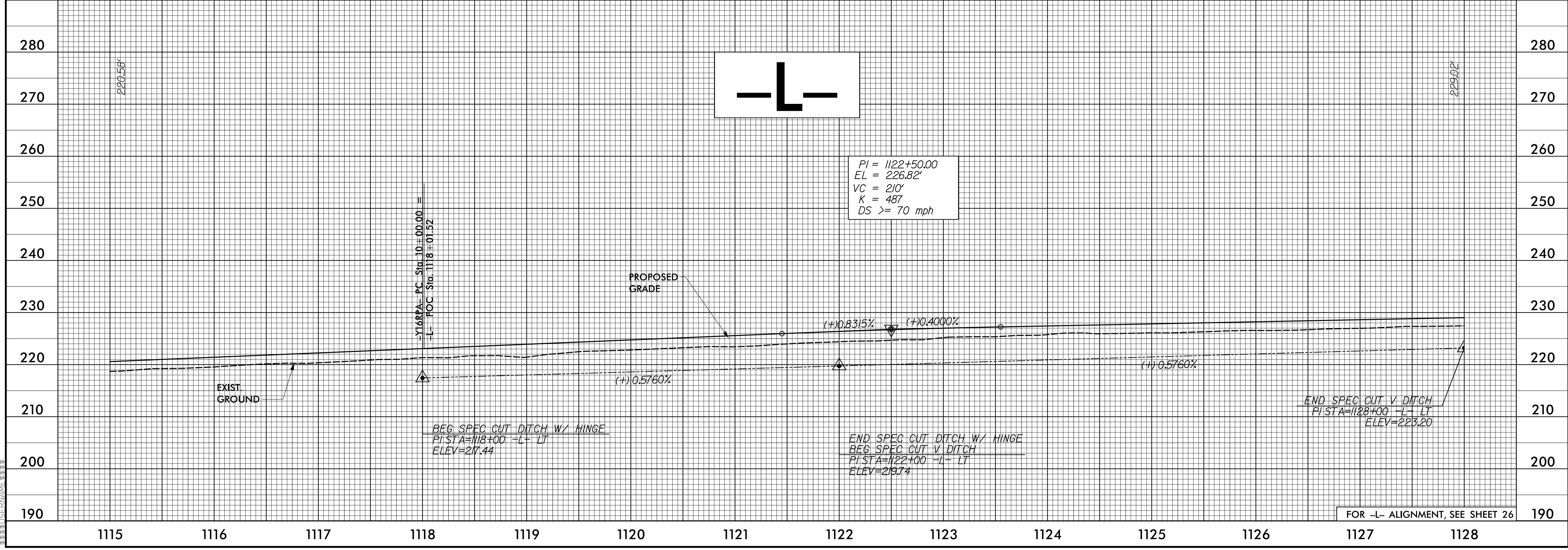
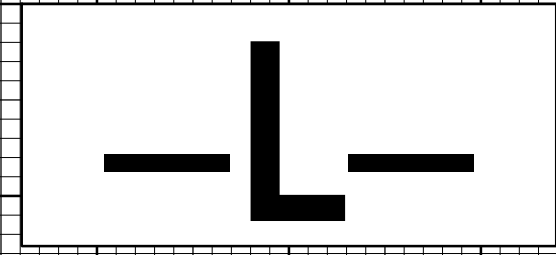
**PIPE HYDRAULIC DATA**  
 2@42" RCP Sta. 1105+50 -L-

DRAINAGE AREA	= 456	AC
DESIGN FREQUENCY	= 50	YRS
DESIGN DISCHARGE	= 80	CFS
DESIGN HW ELEVATION	= 209.2	FT
100 YEAR DISCHARGE	= 90	CFS
100 YEAR HW ELEVATION	= 209.6	FT
OVERTOPPING FREQUENCY	= 100+	YRS
OVERTOPPING DISCHARGE	= 90+	CFS
OVERTOPPING ELEVATION	= 209.7	FT



FOR -L- ALIGNMENT, SEE SHEET 25

12-MAR-2021 09:08  
C:\Users\jlanca\OneDrive\Documents\1-5883\Drawings\1-5883B-Rdy.pfl\_Sheets.L.dgn



FOR -L- ALIGNMENT, SEE SHEET 26