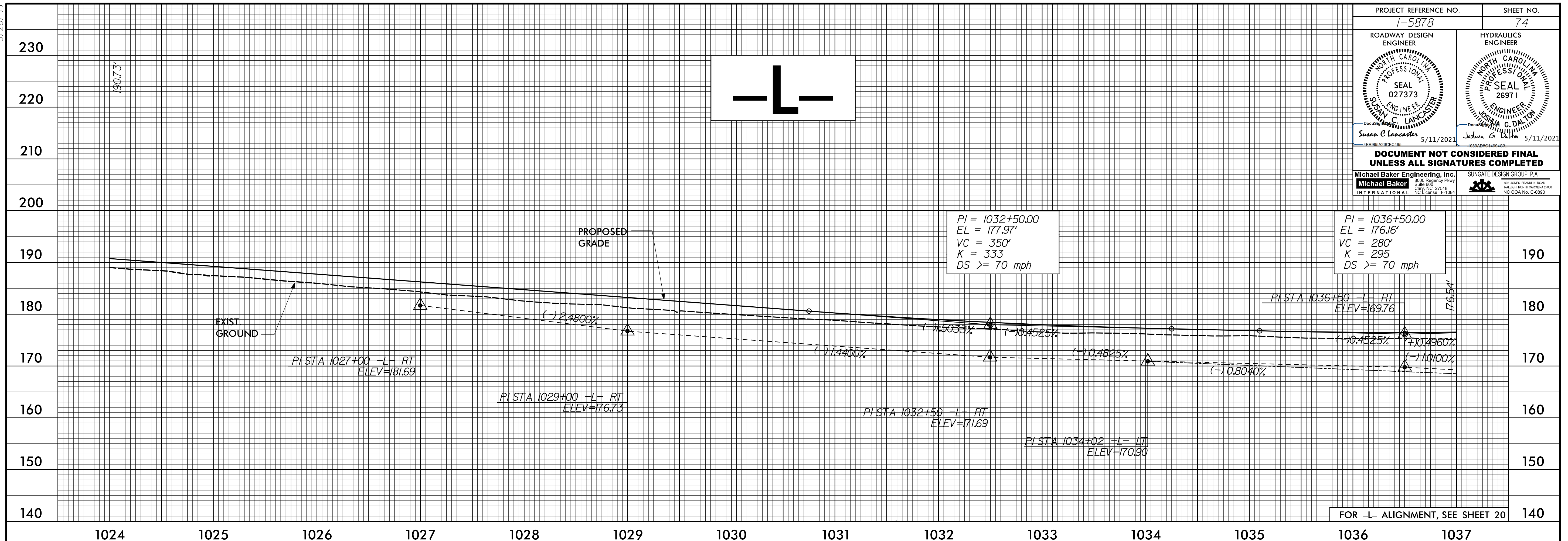


PROJECT REFERENCE NO. 1-5878	SHEET NO. 74
ROADWAY DESIGN ENGINEER SUSAN C LANCASTER SEAL 027373 EXPIRES 12/31/2024 SUNGATE DESIGN GROUP, P.A.	HYDRAULICS ENGINEER JOSHUA G. DILTON PROFESSIONAL SEAL 26971 EXPIRES 12/31/2024 SUNGATE DESIGN GROUP, P.A.
DOCUMENT NOT CONSIDERED FINAL UNLESS ALL SIGNATURES COMPLETED	
Michael Baker Engineering, Inc. 8000 Regency Park Suite 600 Cary, NC 27518 NC License: E-10884	SUNGATE DESIGN GROUP, P.A. 800 JONES FRANKLIN ROAD RALEIGH, NORTH CAROLINA 27603 NC CDA No. C-2850

5/28/19

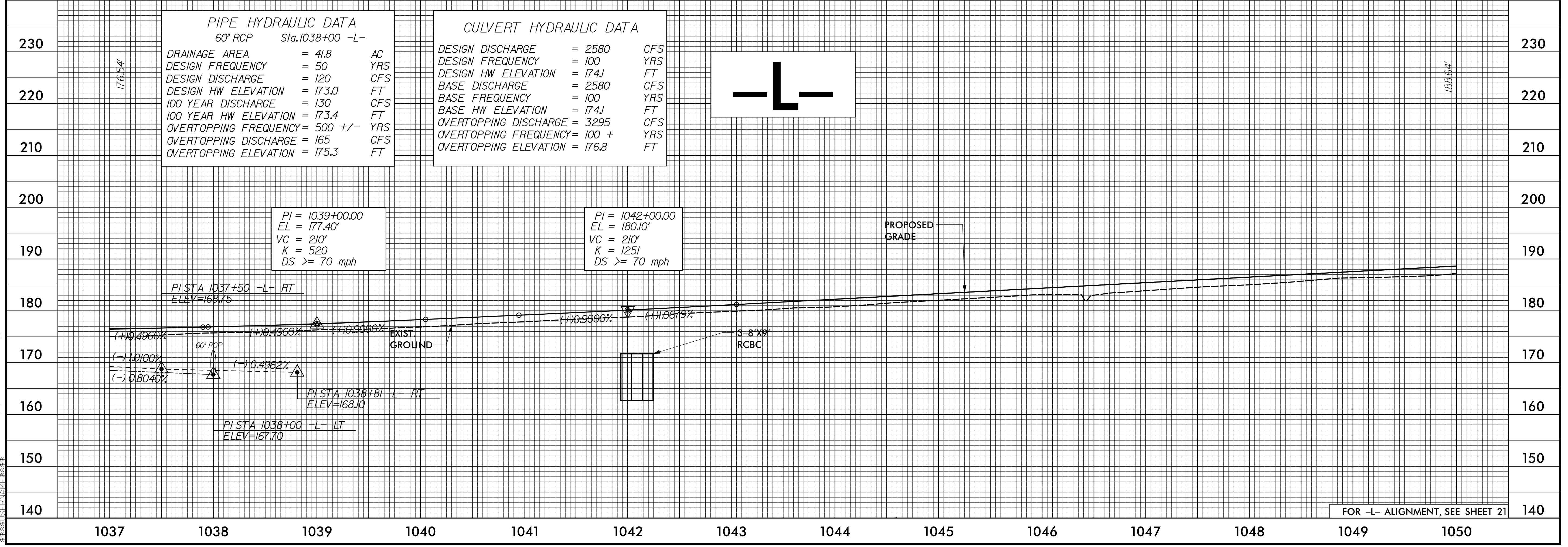


FOR -L- ALIGNMENT, SEE SHEET 20

PIPE HYDRAULIC DATA	
60" RCP	Sta. 1038+00 -L-
DRAINAGE AREA	= 41.8 AC
DESIGN FREQUENCY	= 50 YRS
DESIGN DISCHARGE	= 120 CFS
DESIGN HW ELEVATION	= 173.0 FT
100 YEAR DISCHARGE	= 130 CFS
100 YEAR HW ELEVATION	= 173.4 FT
OVERTOPPING FREQUENCY	= 500 +/- YRS
OVERTOPPING DISCHARGE	= 165 CFS
OVERTOPPING ELEVATION	= 175.3 FT

CULVERT HYDRAULIC DATA	
DESIGN DISCHARGE	= 2580 CFS
DESIGN FREQUENCY	= 100 YRS
DESIGN HW ELEVATION	= 174.1 FT
BASE DISCHARGE	= 2580 CFS
BASE FREQUENCY	= 100 YRS
BASE HW ELEVATION	= 174.1 FT
OVERTOPPING DISCHARGE	= 3295 CFS
OVERTOPPING FREQUENCY	= 100 + YRS
OVERTOPPING ELEVATION	= 176.8 FT

P:\MAR-2021\814\1-5878\814-5878B-Rdy-pfl_Sheets-L.dgn
 11:58:56 AM 5/28/19



FOR -L- ALIGNMENT, SEE SHEET 21