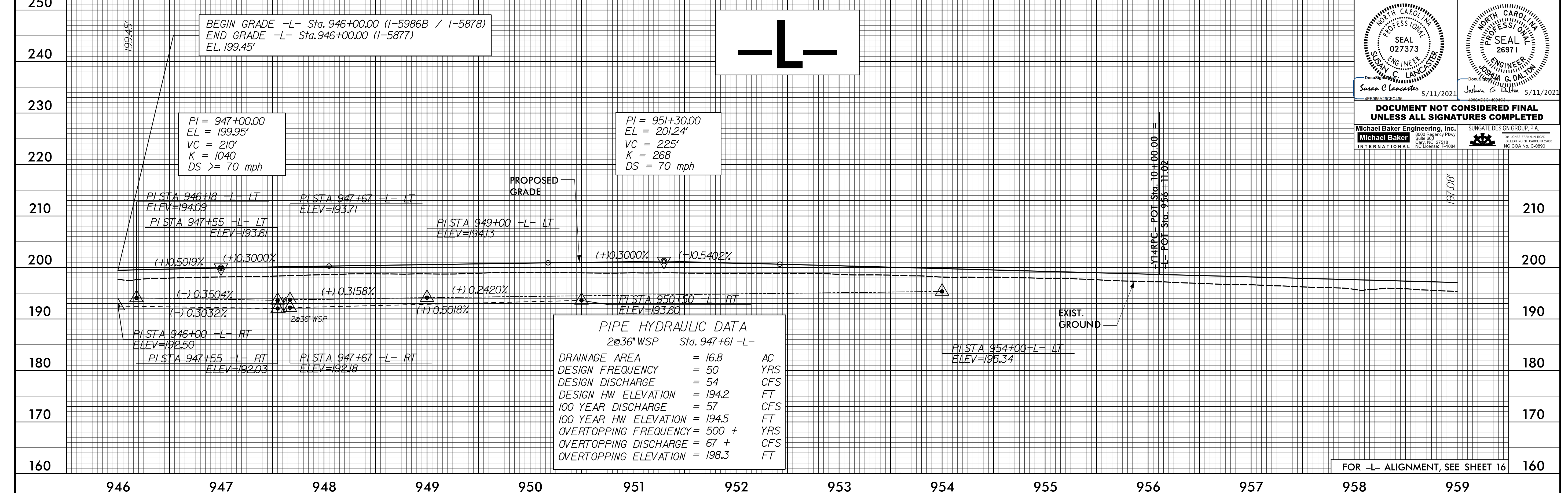


PROJECT REFERENCE NO. 1-5878	SHEET NO. 71
ROADWAY DESIGN ENGINEER SEAL 027373 SUSAN C. LANCASTER 5/11/2021	HYDRAULICS ENGINEER PROFESSIONAL SEAL 26971 JOSHUA G. DIXON 5/11/2021
DOCUMENT NOT CONSIDERED FINAL UNLESS ALL SIGNATURES COMPLETED	
Michael Baker Engineering, Inc. 8000 Regency Park Suite 600 Cary, NC 27518 NC License: T-1084	SUNGATE DESIGN GROUP, P.A. 800 JONES FRANKLIN ROAD RALEIGH, NORTH CAROLINA 27602 NC License: C-2850

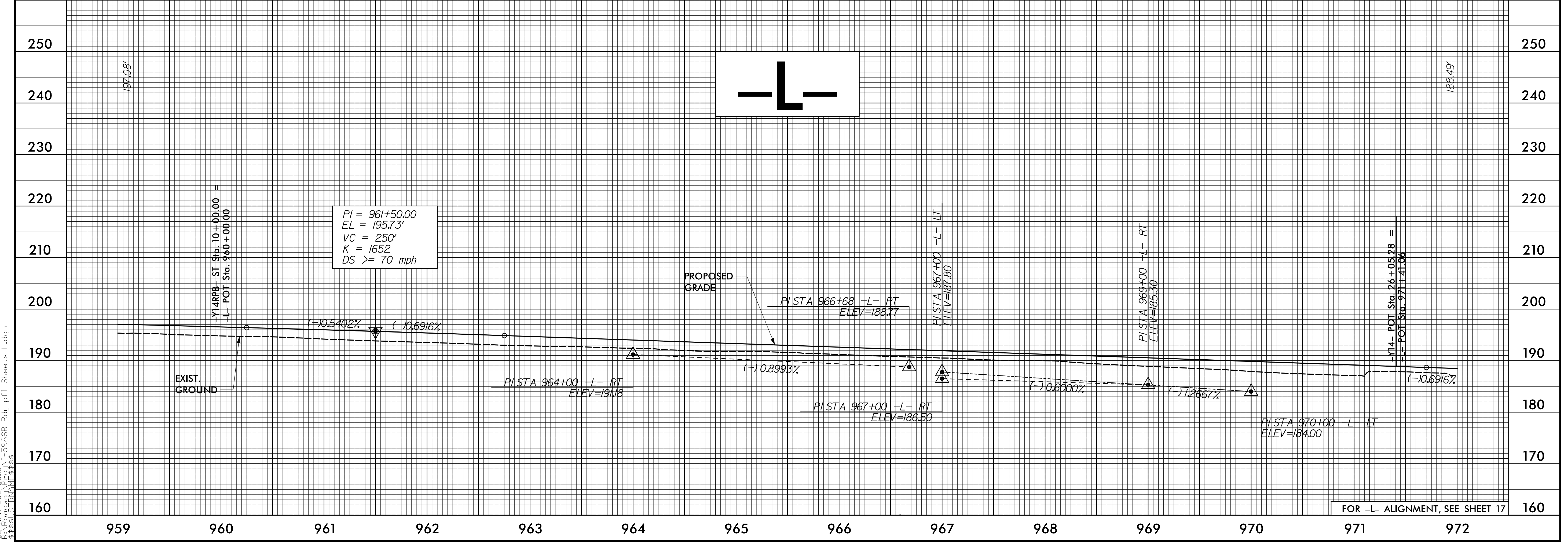
5/28/19



PIPE HYDRAULIC DATA
2@36" WSP Sta. 947+61 -L-

DRAINAGE AREA	= 16.8	AC
DESIGN FREQUENCY	= 50	YRS
DESIGN DISCHARGE	= 54	CFS
DESIGN HW ELEVATION	= 194.2	FT
100 YEAR DISCHARGE	= 57	CFS
100 YEAR HW ELEVATION	= 194.5	FT
OVERTOPPING FREQUENCY	= 500 +	YRS
OVERTOPPING DISCHARGE	= 67 +	CFS
OVERTOPPING ELEVATION	= 198.3	FT

FOR -L- ALIGNMENT, SEE SHEET 16



PIPE HYDRAULIC DATA
2@36" WSP Sta. 961+50 -L-

DRAINAGE AREA	= 16.8	AC
DESIGN FREQUENCY	= 50	YRS
DESIGN DISCHARGE	= 54	CFS
DESIGN HW ELEVATION	= 194.2	FT
100 YEAR DISCHARGE	= 57	CFS
100 YEAR HW ELEVATION	= 194.5	FT
OVERTOPPING FREQUENCY	= 500 +	YRS
OVERTOPPING DISCHARGE	= 67 +	CFS
OVERTOPPING ELEVATION	= 198.3	FT

FOR -L- ALIGNMENT, SEE SHEET 17

PC: APR-2021 08:19 \\1-5986B-Rdy-pfl-Sheet16.L.dgn