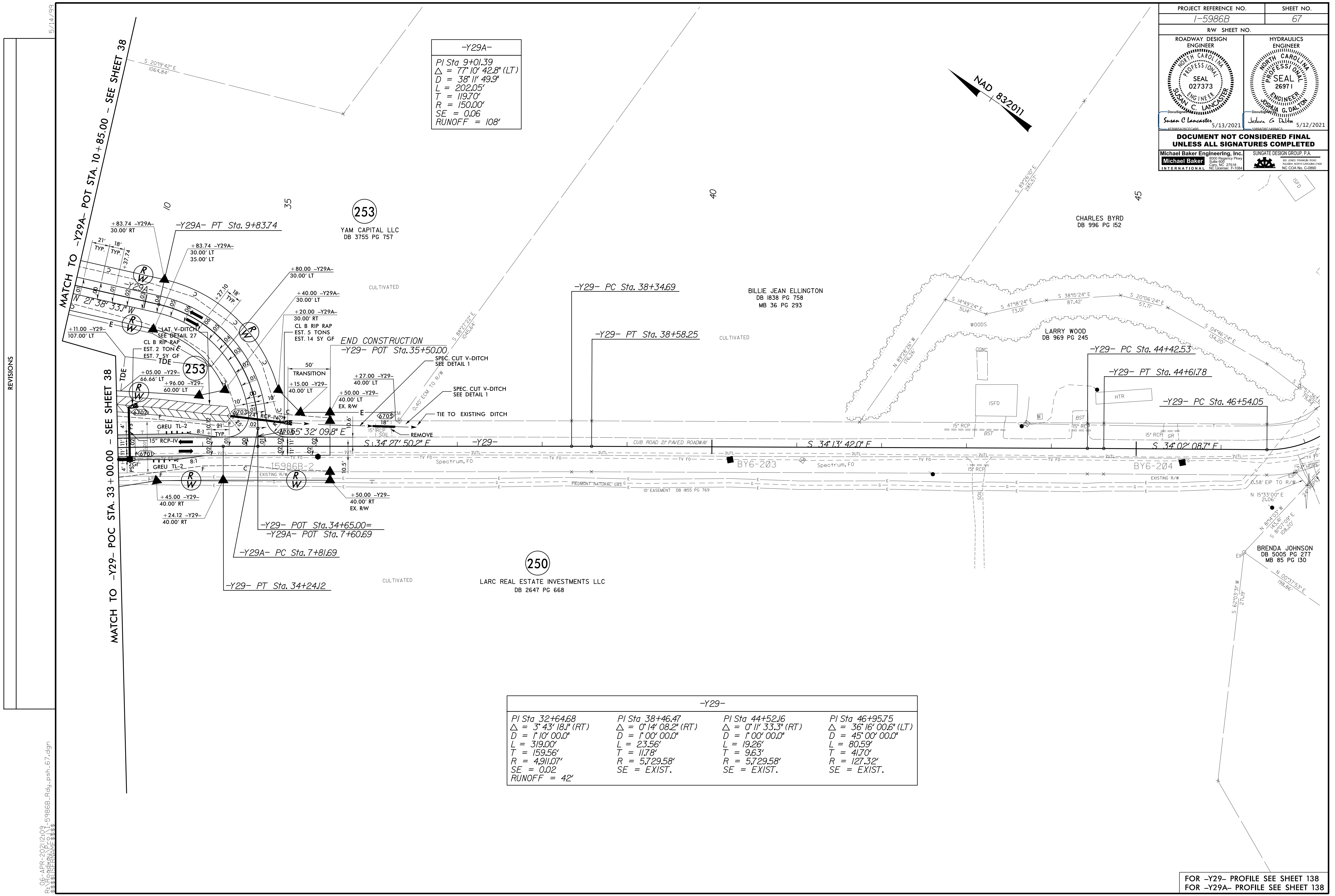


PROJECT REFERENCE NO. 1-5986B	SHEET NO. 67
RW SHEET NO.	
ROADWAY DESIGN ENGINEER SUNGAN C. LANCASTER SEAL 027373 SUNGAN C. LANCASTER 5/13/2021	HYDRAULICS ENGINEER JOSHUA G. DALTON SEAL 26971 JOSHUA G. DALTON 5/12/2021
DOCUMENT NOT CONSIDERED FINAL UNLESS ALL SIGNATURES COMPLETED	
Michael Baker Engineering, Inc. INTERNATIONAL	SUNGATE DESIGN GROUP, P.A.

-Y29A-
 PI Sta 9+01.39
 $\Delta = 77^{\circ} 10' 42.8''$ (LT)
 $D = 38^{\circ} 11' 49.9''$
 $L = 202.05'$
 $T = 119.70'$
 $R = 150.00'$
 $SE = 0.06$
 RUNOFF = 108'

-Y29-

PI Sta 32+64.68 $\Delta = 3^{\circ} 43' 18.1''$ (RT) $D = 1^{\circ} 10' 00.0''$ $L = 319.00'$ $T = 159.56'$ $R = 4,911.07'$ $SE = 0.02$ RUNOFF = 42'	PI Sta 38+46.47 $\Delta = 0^{\circ} 14' 08.2''$ (RT) $D = 1^{\circ} 00' 00.0''$ $L = 23.56'$ $T = 11.78'$ $R = 5,729.58'$ $SE = EXIST.$	PI Sta 44+52.16 $\Delta = 0^{\circ} 11' 33.3''$ (RT) $D = 1^{\circ} 00' 00.0''$ $L = 19.26'$ $T = 9.63'$ $R = 5,729.58'$ $SE = EXIST.$	PI Sta 46+95.75 $\Delta = 36^{\circ} 16' 00.6''$ (LT) $D = 45^{\circ} 00' 00.0''$ $L = 80.59'$ $T = 41.70'$ $R = 127.32'$ $SE = EXIST.$
---	---	--	---



REVISIONS

5/14/99

R:\06-APR-2021\2104-5986B_Rdly_psh_67.dgn
 11:53:50 AM 5/13/2021

FOR -Y29- PROFILE SEE SHEET 138
 FOR -Y29A- PROFILE SEE SHEET 138