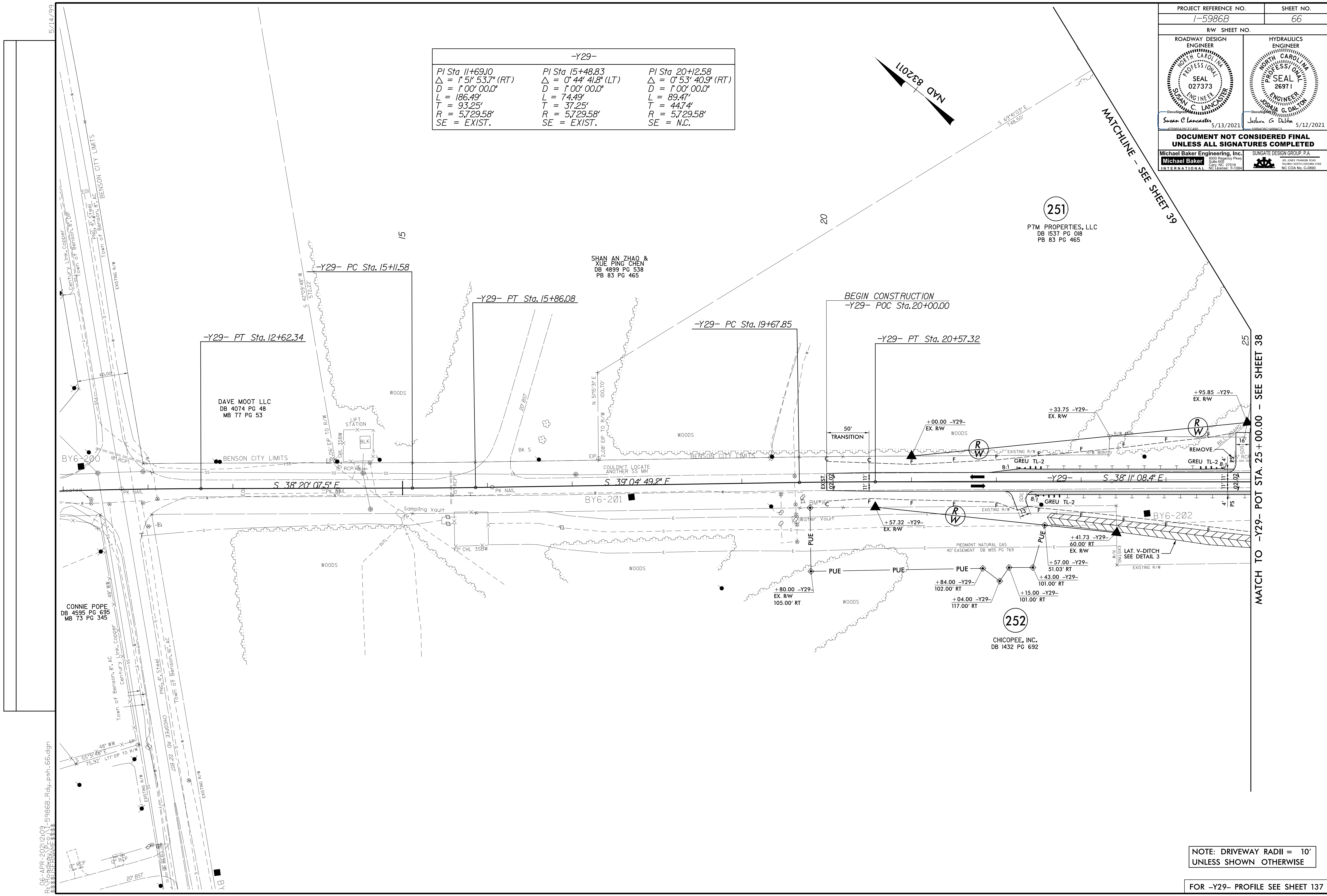


PROJECT REFERENCE NO. 1-5986B		SHEET NO. 66	
RW SHEET NO.			
ROADWAY DESIGN ENGINEER SUSAN C. LANCASTER SEAL 027373 5/13/2021		HYDRAULICS ENGINEER JOSHUA G. DALTON SEAL 26971 5/12/2021	
DOCUMENT NOT CONSIDERED FINAL UNLESS ALL SIGNATURES COMPLETED			
Michael Baker Engineering, Inc. INTERNATIONAL		SUNGATE DESIGN GROUP, P.A.	

-Y29-		
PI Sta 11+69.10	PI Sta 15+48.83	PI Sta 20+25.58
$\Delta = 1^{\circ} 51' 53.7''$ (RT)	$\Delta = 0^{\circ} 44' 41.8''$ (LT)	$\Delta = 0^{\circ} 53' 40.9''$ (RT)
$D = 1^{\circ} 00' 00.0''$	$D = 1^{\circ} 00' 00.0''$	$D = 1^{\circ} 00' 00.0''$
$L = 186.49'$	$L = 74.49'$	$L = 89.47'$
$T = 93.25'$	$T = 37.25'$	$T = 44.74'$
$R = 5,729.58'$	$R = 5,729.58'$	$R = 5,729.58'$
SE = EXIST.	SE = EXIST.	SE = N.C.



NOTE: DRIVEWAY RADII = 10'
UNLESS SHOWN OTHERWISE

FOR -Y29- PROFILE SEE SHEET 137

06-APR-2021 12:09 - 5986B_Rdly_psh_66.dgn
 3:33:50 PM
 5/14/99