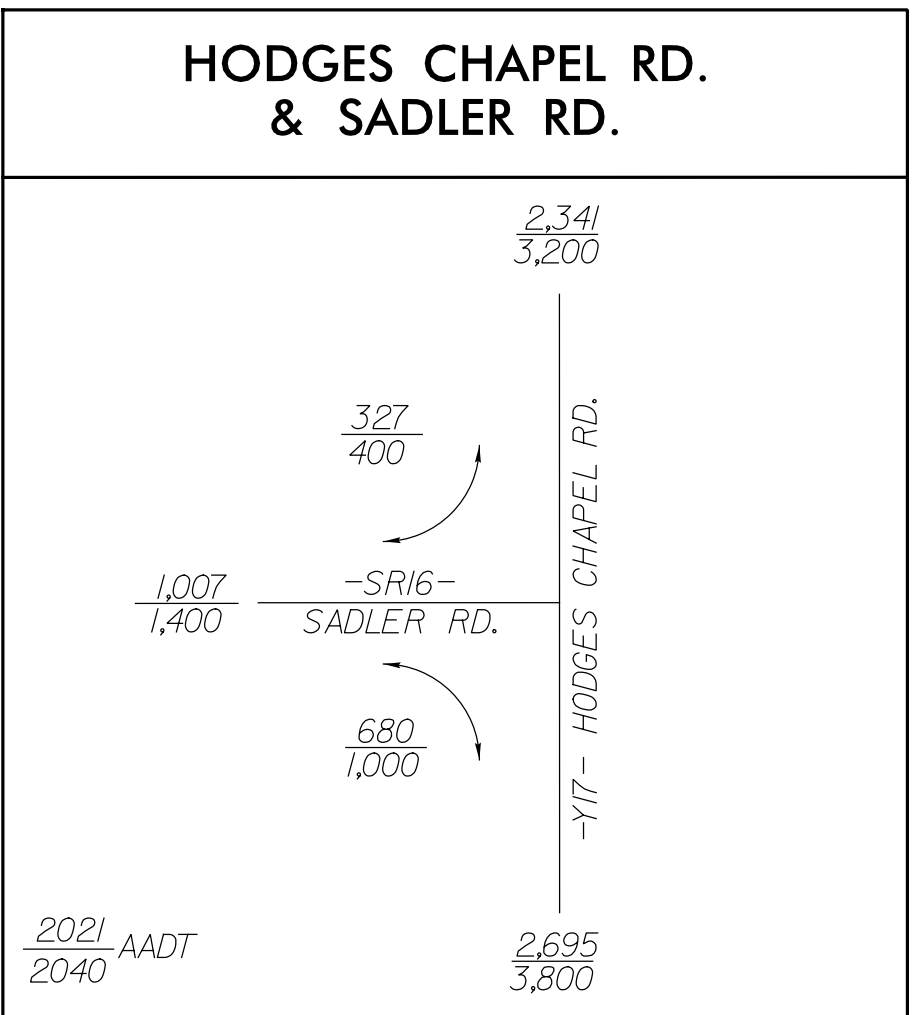
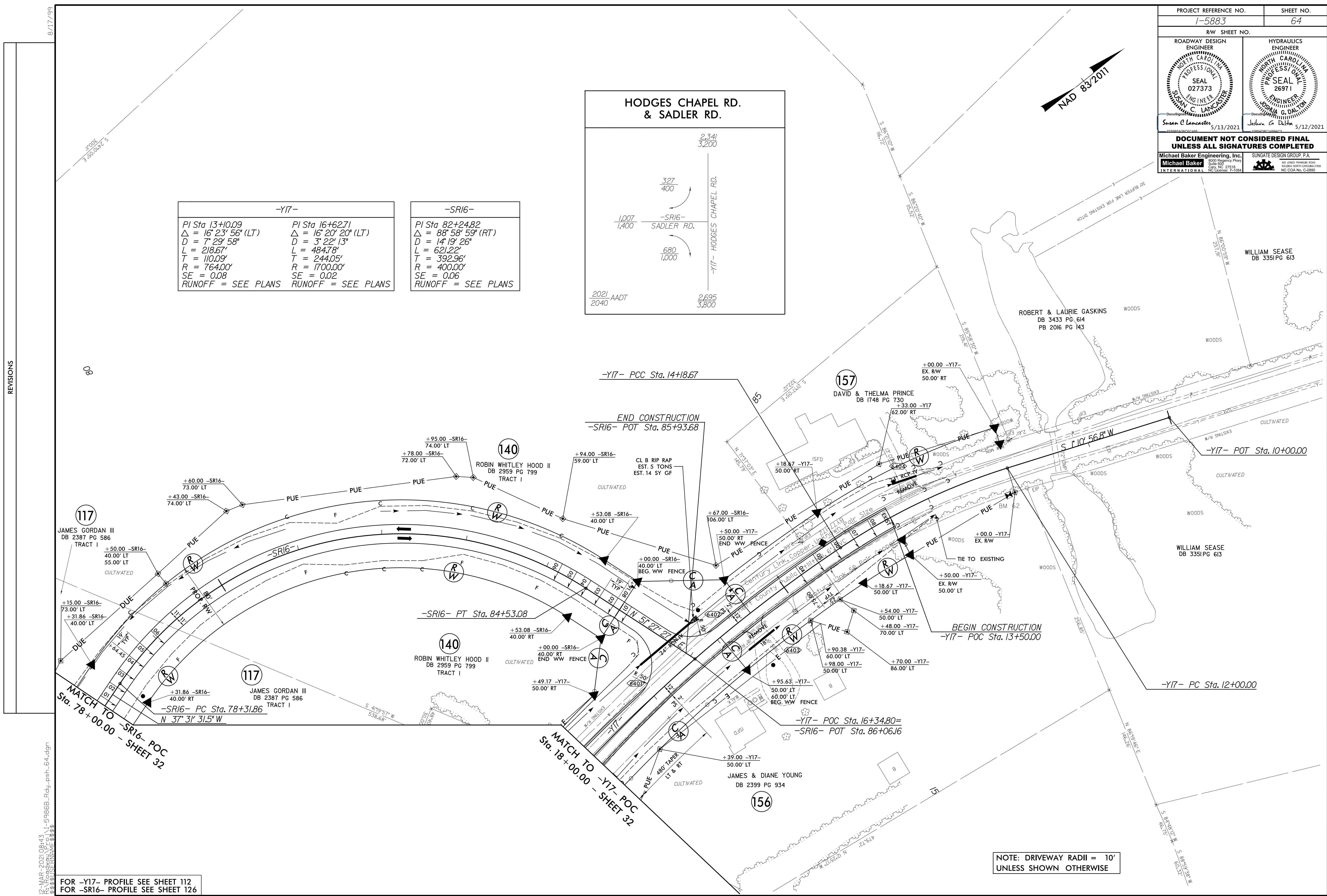


PROJECT REFERENCE NO. 1-5883		SHEET NO. 64	
RW SHEET NO.			
ROADWAY DESIGN ENGINEER		HYDRAULICS ENGINEER	
Susan C. Lancaster 5/13/2021		Joshua G. Dalton 5/12/2021	
DOCUMENT NOT CONSIDERED FINAL UNLESS ALL SIGNATURES COMPLETED			
Michael Baker Engineering, Inc. 1000 Ruffalo Parkway Suite 600 Cary, NC 27518 NC License: P-1084		SUNGATE DESIGN GROUP, P.A. 602 ZONES FRANKLIN ROAD RALEIGH, NORTH CAROLINA 27604 NC COA No. C-48890	



-Y17-		-SR16-	
PI Sta 13+0.09	PI Sta 16+62.71	PI Sta 82+24.82	PI Sta 82+24.82
$\Delta = 16' 23' 56''$ (LT)	$\Delta = 16' 20' 20''$ (LT)	$\Delta = 88' 58' 59''$ (RT)	$\Delta = 88' 58' 59''$ (RT)
D = 7' 29' 58"	D = 3' 22' 13"	D = 14' 19' 26"	D = 14' 19' 26"
L = 218.67'	L = 484.78'	L = 621.22'	L = 621.22'
T = 110.09'	T = 244.05'	T = 392.96'	T = 392.96'
R = 764.00'	R = 1700.00'	R = 400.00'	R = 400.00'
SE = 0.08	SE = 0.02	SE = 0.06	SE = 0.06
RUNOFF = SEE PLANS	RUNOFF = SEE PLANS	RUNOFF = SEE PLANS	RUNOFF = SEE PLANS

REVISIONS



R:\MAR-2021\08\43\1-59866B_Rdy_psh_64.dgn

FOR -Y17- PROFILE SEE SHEET 112
FOR -SR16- PROFILE SEE SHEET 126

NOTE: DRIVEWAY RADII = 10'
UNLESS SHOWN OTHERWISE