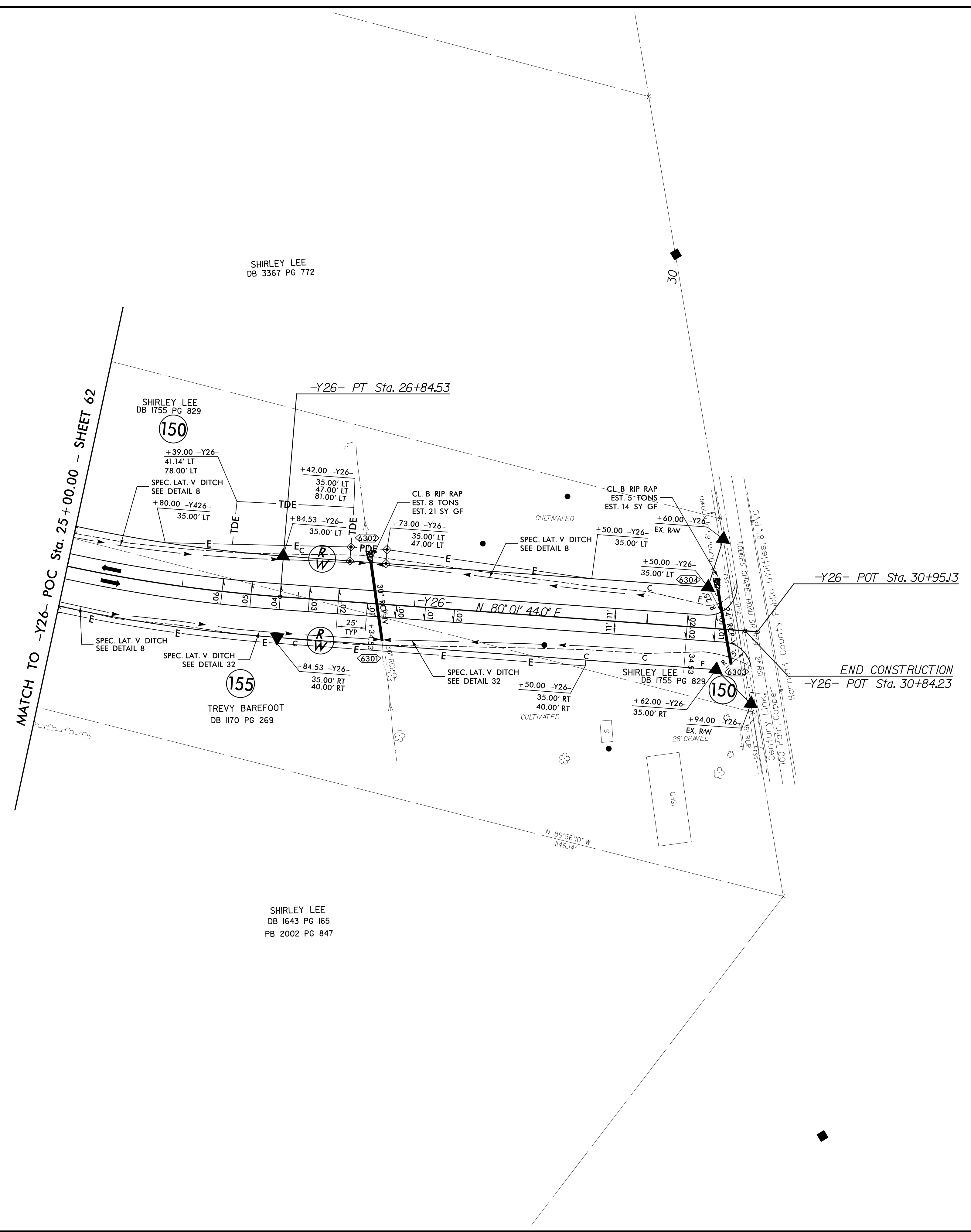
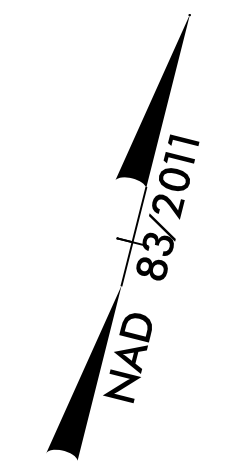


REVISIONS



-Y26-
 PI Sta 23+33.90
 $\Delta = 30^{\circ} 59' 19''$ (LT)
 $D = 4' 18' 29''$
 $L = 719.33'$
 $T = 368.70'$
 $R = 1330.00'$
 $SE = 0.06$



PROJECT REFERENCE NO. 1-5883	SHEET NO. 63
RW SHEET NO.	
ROADWAY DESIGN ENGINEER SUSAN C. LANCASTER SEAL 027373 5/13/2021	HYDRAULICS ENGINEER JOSHUA G. DALTON SEAL 26971 5/12/2021
DOCUMENT NOT CONSIDERED FINAL UNLESS ALL SIGNATURES COMPLETED	
Michael Baker Engineering, Inc. INTERNATIONAL	SUNGATE DESIGN GROUP, P.A.

NOTE: DRIVEWAY RADII = 10'
UNLESS SHOWN OTHERWISE

FOR -Y26- PROFILE SEE SHEET 117