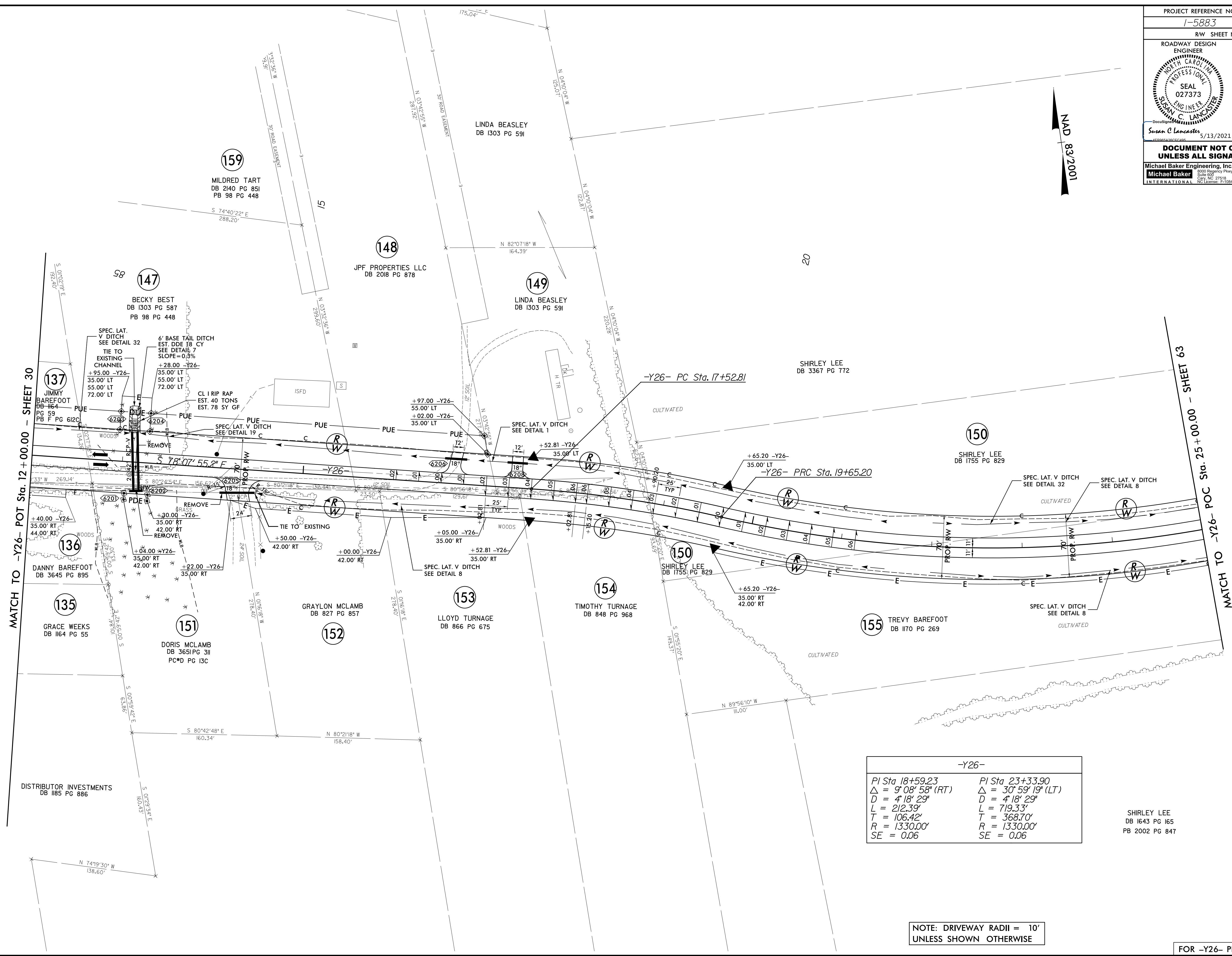
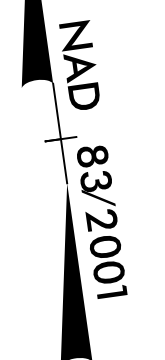


PROJECT REFERENCE NO. 1-5883	SHEET NO. 62
RW SHEET NO.	
ROADWAY DESIGN ENGINEER SUSAN C. LANCASTER SEAL 027373 5/13/2021	HYDRAULICS ENGINEER JOSHUA G. DALTON SEAL 26971 5/12/2021
DOCUMENT NOT CONSIDERED FINAL UNLESS ALL SIGNATURES COMPLETED	
Michael Baker Engineering, Inc. 1000 Ragingony Place Suite 600 Cary, NC 27518 NC License: P-1084	SUNGATE DESIGN GROUP, P.A. 62 JONES FRANKER ROAD HALEBORO, NORTH CAROLINA 27638 NC COA No. C-4890



REVISIONS

MATCH TO -Y26- POT Sta. 12 + 00.00 - SHEET 30

MATCH TO -Y26- POC Sta. 25 + 00.00 - SHEET 63

-Y26-	
PI Sta 18+59.23	PI Sta 23+33.90
$\Delta = 9^{\circ} 08' 58''$ (RT)	$\Delta = 30^{\circ} 59' 19''$ (LT)
D = 4' 18' 29"	D = 4' 18' 29"
L = 212.39'	L = 719.33'
T = 106.42'	T = 368.70'
R = 1330.00'	R = 1330.00'
SE = 0.06	SE = 0.06

SHIRLEY LEE
DB 1643 PG 165
PB 2002 PG 847

NOTE: DRIVEWAY RADII = 10'
UNLESS SHOWN OTHERWISE

FOR -Y26- PROFILE SEE SHEET 117