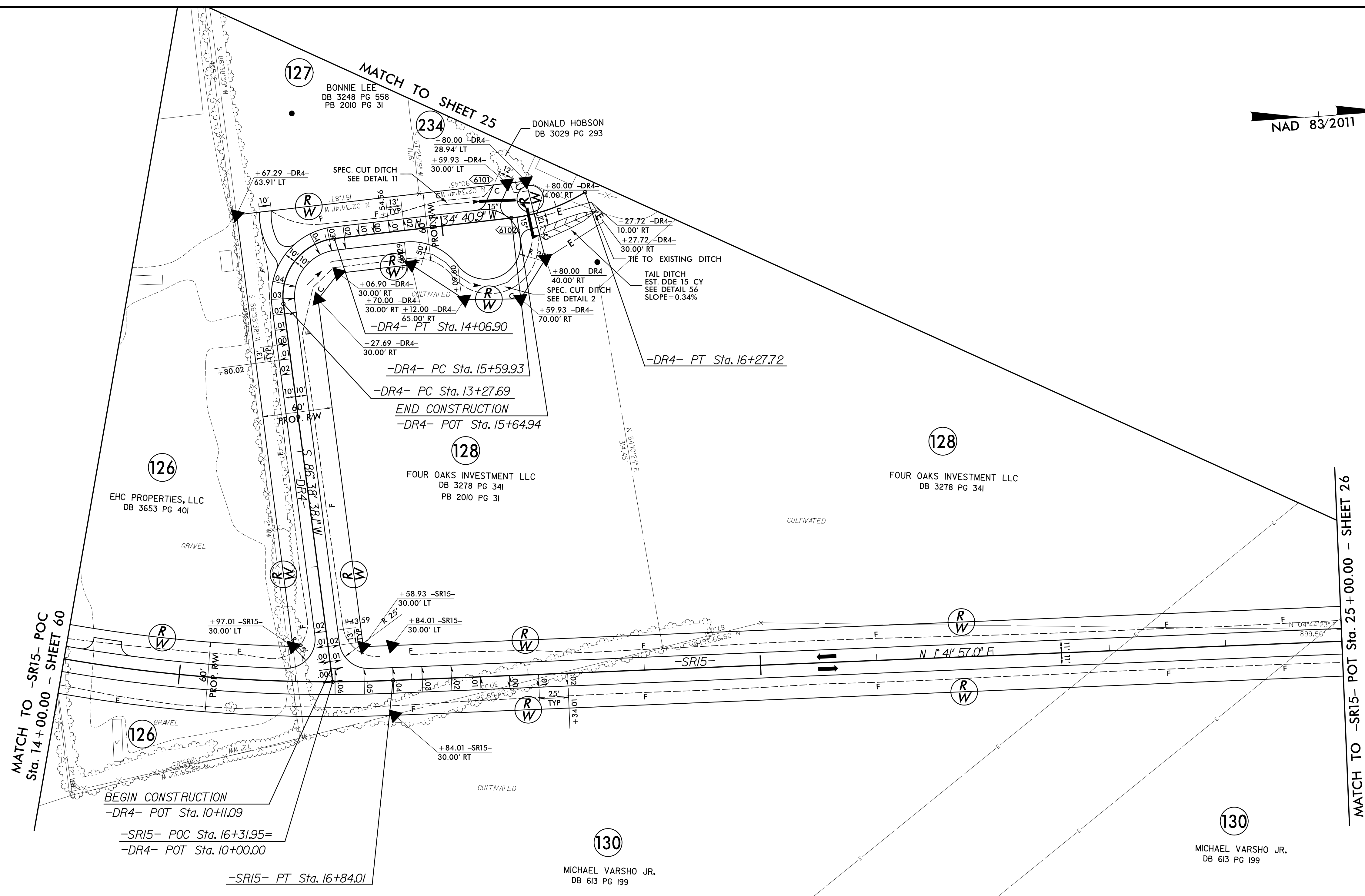
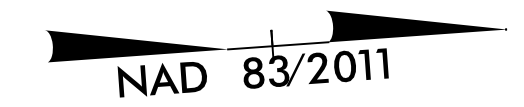


| | |
|---|--|
| PROJECT REFERENCE NO. 1-5883 | SHEET NO. 61 |
| RW SHEET NO. | |
| ROADWAY DESIGN ENGINEER SUSAN C. LANCASTER SEAL 027373 5/13/2021 | HYDRAULICS ENGINEER JOSHUA G. DALTON SEAL 26971 5/12/2021 |
| DOCUMENT NOT CONSIDERED FINAL UNLESS ALL SIGNATURES COMPLETED | |
| Michael Baker Engineering, Inc. INTERNATIONAL | SUNGATE DESIGN GROUP, P.A. |



REVISIONS

| -SRI5- | -DR4- | |
|-----------------------------------|----------------------------------|-----------------------------------|
| PI Sta 14+63.39 | PI Sta 13+78.37 | PI Sta 15+94.38 |
| $\Delta = 19^\circ 11' 24''$ (LT) | $\Delta = 90^\circ 46' 4''$ (RT) | $\Delta = 25^\circ 13' 17''$ (LT) |
| D = 4' 18" 29" | D = 11' 35" 30" | D = 37' 12" 18" |
| L = 445.45' | L = 79.22' | L = 67.79' |
| T = 224.83' | T = 50.68' | T = 34.45' |
| R = 1330.00' | R = 50.00' | R = 154.00' |
| SE = 0.06 | SE = 0.04 | SE = NC |

NOTE: DRIVEWAY RADII = 10' UNLESS SHOWN OTHERWISE

FOR -SRI5- PROFILE SEE SHEET 120 FOR -DR4- PROFILE SEE SHEET 130

8/17/99
R:\MAR_2021\08-42-11-59866B_Rdy_psh_61.dgn