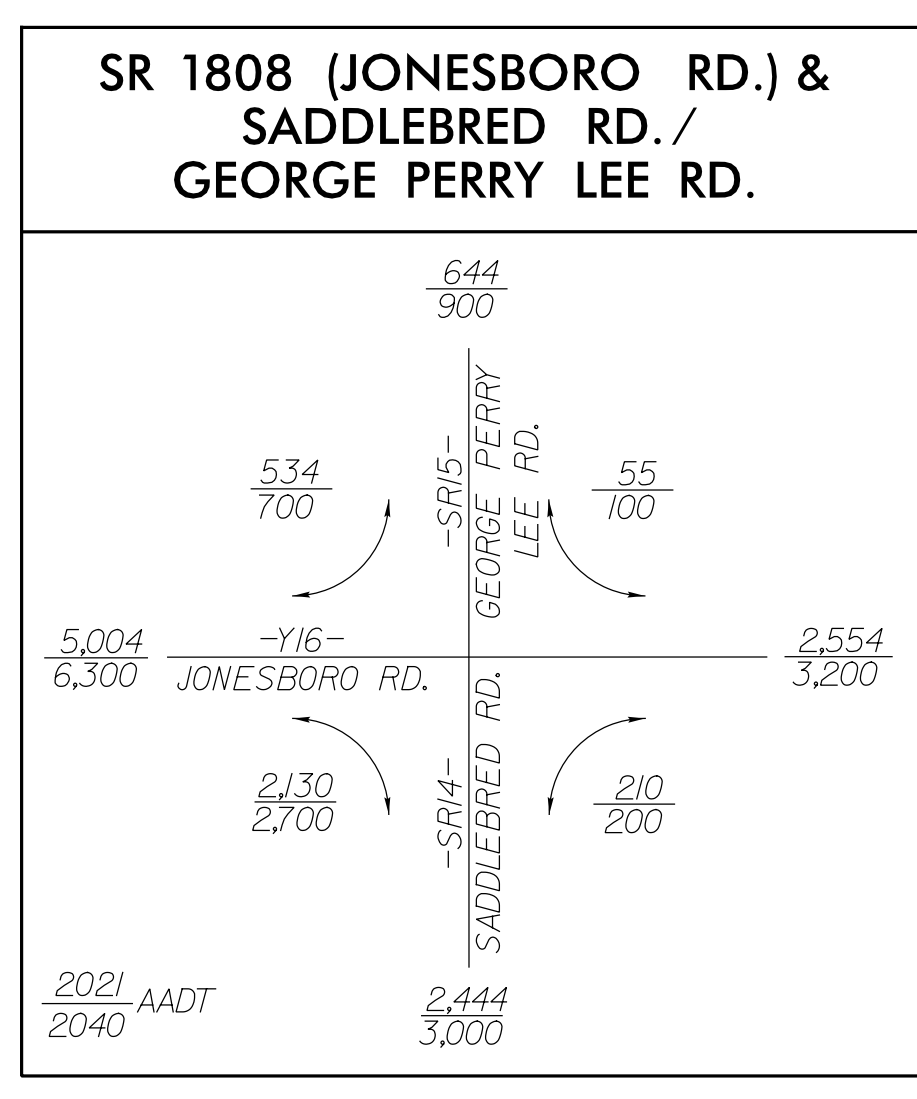
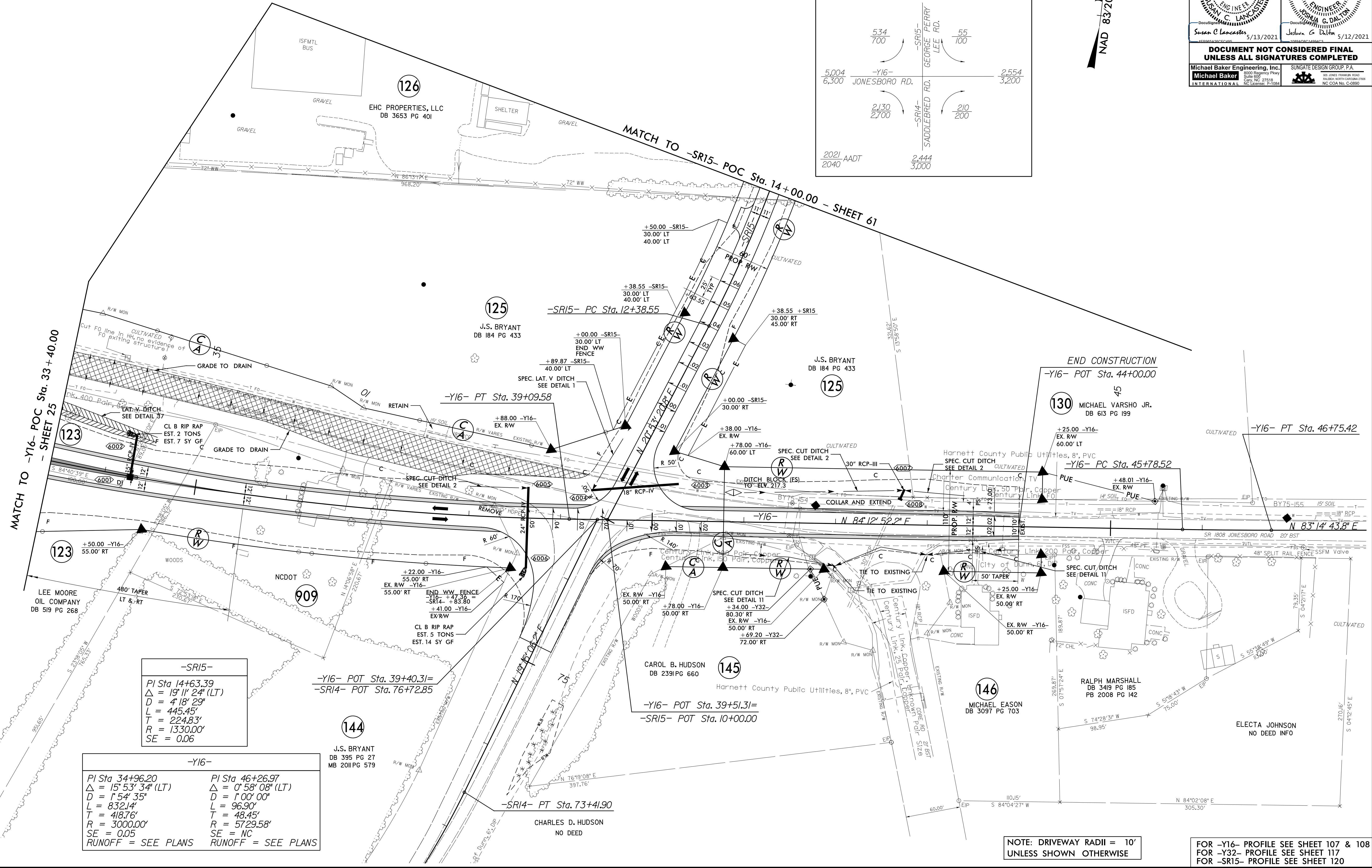


PROJECT REFERENCE NO. 1-5883	SHEET NO. 60
RW SHEET NO.	
ROADWAY DESIGN ENGINEER SUSAN C. LANCASTER SEAL 027373 NORTH CAROLINA PROFESSIONAL ENGINEER	HYDRAULICS ENGINEER JOSHUA G. DALTON SEAL 26971 NORTH CAROLINA PROFESSIONAL ENGINEER
5/13/2021	5/12/2021
DOCUMENT NOT CONSIDERED FINAL UNLESS ALL SIGNATURES COMPLETED	
Michael Baker Engineering, Inc. 1000 Ragingway Pkwy Suite 600 Cary, NC 27518 INTERNATIONAL	SUNGATE DESIGN GROUP, P.A. 202 JAMES FRANKER ROAD RALEIGH, NORTH CAROLINA 27604 NC License: P-1084



NAD 83/2011

REVISIONS



-SR15-
 PI Sta 14+63.39
 $\Delta = 19^\circ 11' 24''$ (LT)
 D = 4' 18' 29"
 L = 445.45'
 T = 224.83'
 R = 1330.00'
 SE = 0.06

-Y16-	
PI Sta 34+96.20 $\Delta = 15^\circ 53' 34''$ (LT) D = 1' 54' 35" L = 832.14' T = 418.76' R = 3000.00' SE = 0.05 RUNOFF = SEE PLANS	PI Sta 46+26.97 $\Delta = 0^\circ 58' 08''$ (LT) D = 1' 00' 00" L = 96.90' T = 48.45' R = 5729.58' SE = NC RUNOFF = SEE PLANS

144
 J.S. BRYANT
 DB 395 PG 27
 MB 201 PG 579

NOTE: DRIVEWAY RADII = 10' UNLESS SHOWN OTHERWISE

FOR -Y16- PROFILE SEE SHEET 107 & 108
 FOR -Y32- PROFILE SEE SHEET 117
 FOR -SR15- PROFILE SEE SHEET 120

8/17/99
 18-MAR-2021 08:42
 R:\V\1808\1808-21-59868-Rdy_psh_60.dgn
 3:33:30 PM