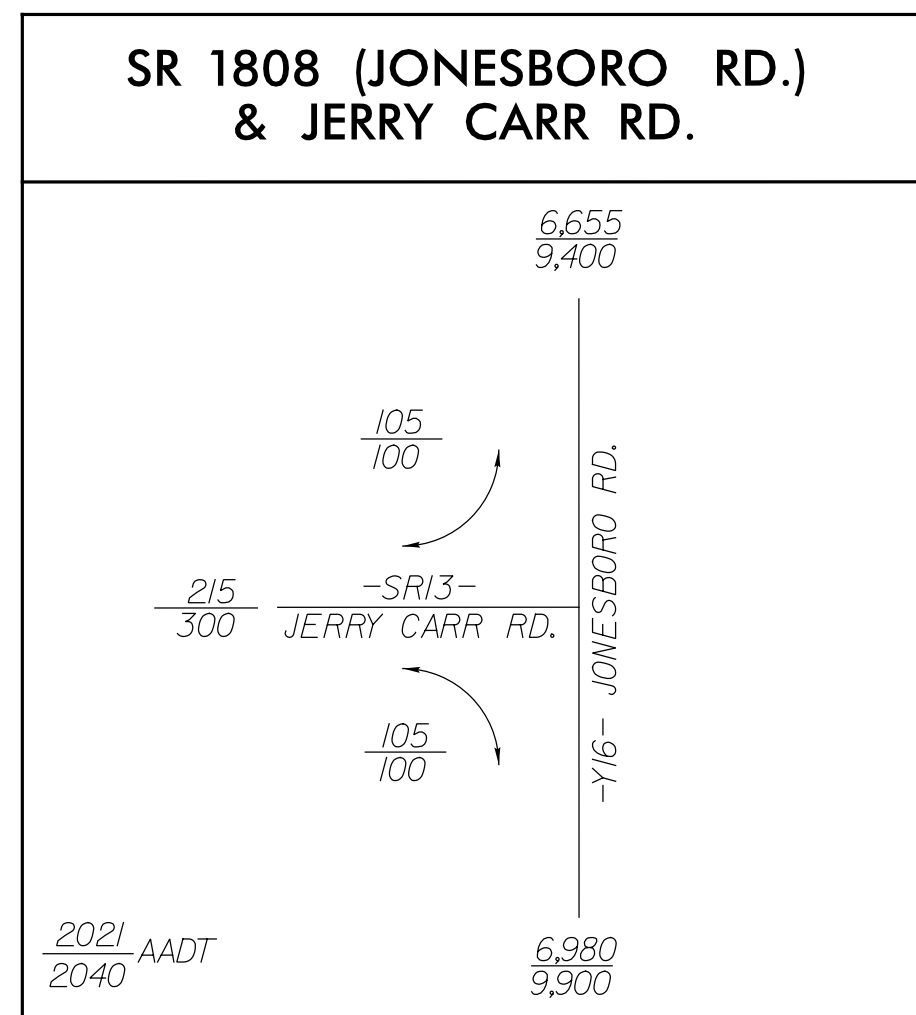


PROJECT REFERENCE NO. 1-5883		SHEET NO. 59	
RW SHEET NO.		HYDRAULICS ENGINEER	
ROADWAY DESIGN ENGINEER		SEAL 26971	
Susan C. Lancaster 5/13/2021		Joshua G. Dalton 5/12/2021	
DOCUMENT NOT CONSIDERED FINAL UNLESS ALL SIGNATURES COMPLETED			
Michael Baker Engineering, Inc. 1000 Regency Park Suite 600 Raleigh, NC 27618 Tel: 919.876.1000 Fax: 919.876.1001 www.mbakergroup.com INTERNATIONAL		SUNGATE DESIGN GROUP, P.A. 602 JAMES FRANKER ROAD RALEIGH, NORTH CAROLINA 27618 Tel: 919.876.1000 Fax: 919.876.1001 www.sungatedesign.com NC CCA No. C-48890	



-SR13-

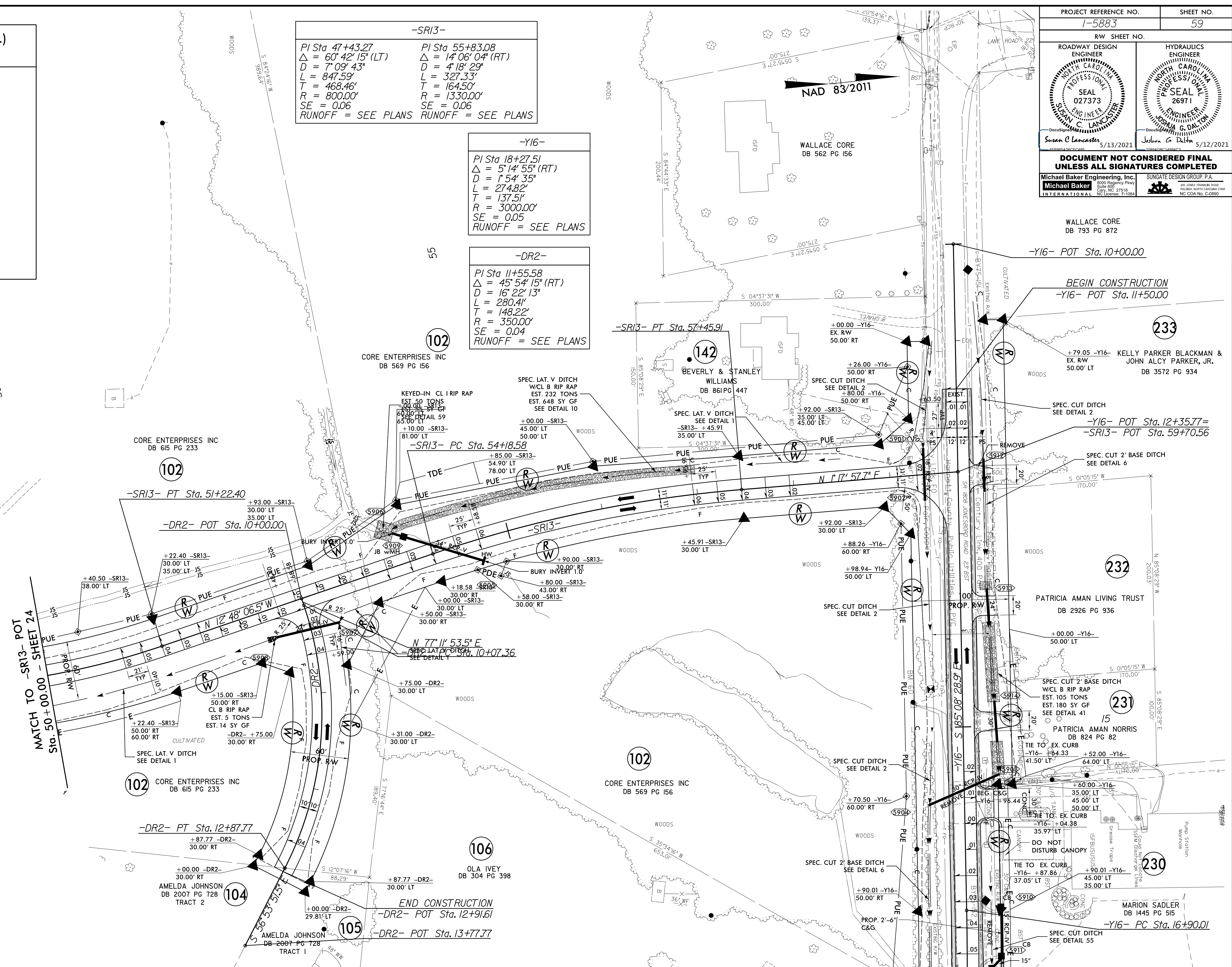
PI Sta 47+43.27	PI Sta 55+83.08
$\Delta = 60^\circ 42' 15''$ (LT)	$\Delta = 14^\circ 06' 04''$ (RT)
$D = 7^\circ 09' 43''$	$D = 4^\circ 18' 29''$
$L = 847.59'$	$L = 327.33'$
$T = 468.46'$	$T = 164.50'$
$R = 800.00'$	$R = 1330.00'$
$SE = 0.06$	$SE = 0.06$
RUNOFF = SEE PLANS	RUNOFF = SEE PLANS

-Y16-

PI Sta 18+27.51
$\Delta = 5^\circ 14' 55''$ (RT)
$D = 1^\circ 54' 35''$
$L = 274.82'$
$T = 137.51'$
$R = 3000.00'$
$SE = 0.05$
RUNOFF = SEE PLANS

-DR2-

PI Sta 11+55.58
$\Delta = 45^\circ 54' 15''$ (RT)
$D = 16^\circ 22' 13''$
$L = 280.41'$
$T = 148.22'$
$R = 350.00'$
$SE = 0.04$
RUNOFF = SEE PLANS



NOTE: DRIVEWAY RADII = 10'
UNLESS SHOWN OTHERWISE

FOR -Y16- PROFILE SEE SHEET 107
FOR -SR13- PROFILE SEE SHEET 119
FOR -DR2- PROFILE SEE SHEET 129

MATCH TO -Y16- POC Sta. 17+50.00 - SHEET 25

REVISIONS

R:\MAR-2021\08-42-AT-1-59866B-Rdy-psh-59.dgn
8/17/2021 8:42:11 AM