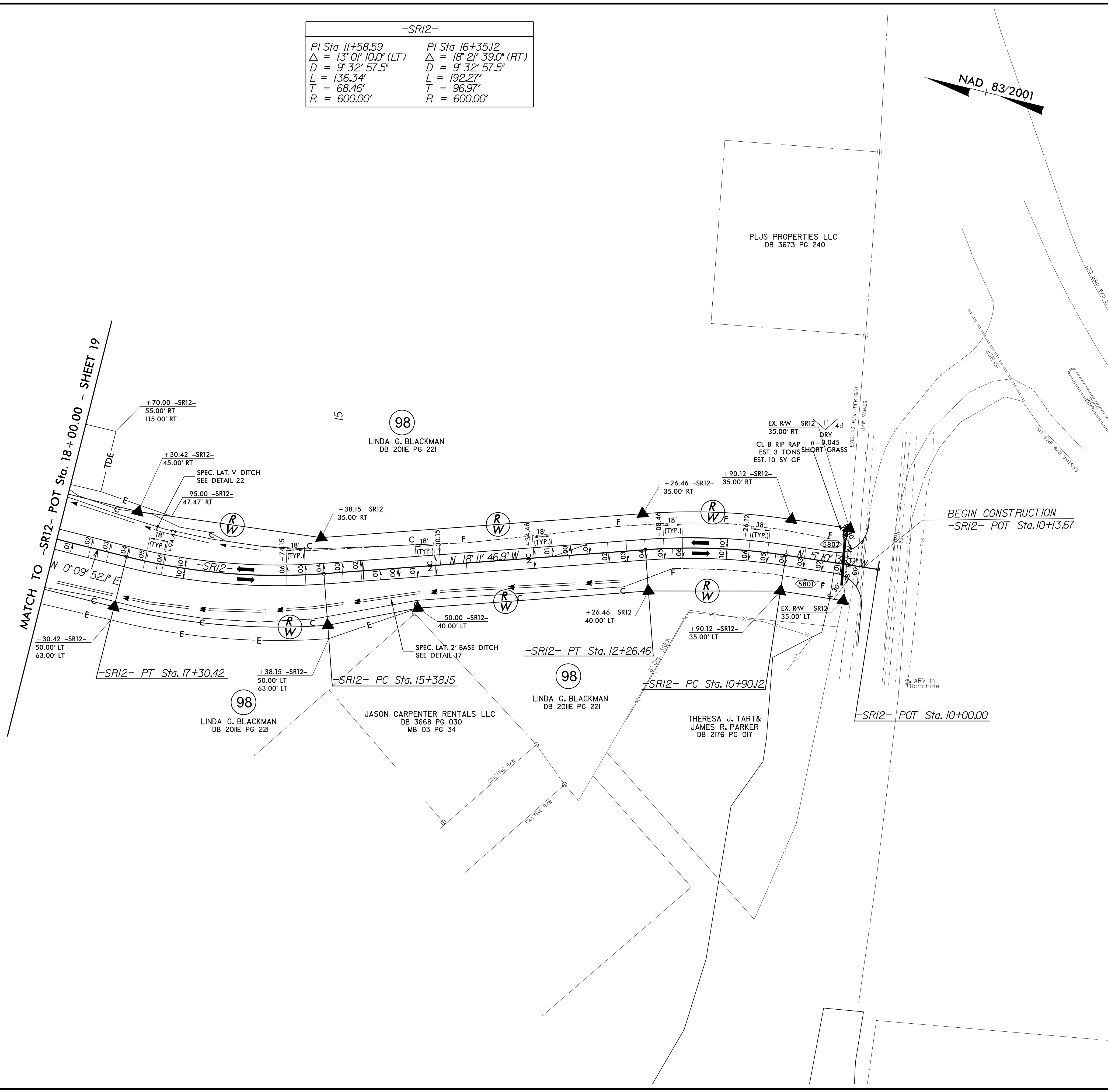


5/14/2021

-SR12-	
PI Sta 11+58.59	PI Sta 16+35.12
$\Delta = 13^{\circ} 01' 10.0''$ (LT)	$\Delta = 18^{\circ} 21' 39.0''$ (RT)
D = 9' 32' 57.5"	D = 9' 32' 57.5"
L = 136.34'	L = 192.27'
T = 68.46'	T = 96.97'
R = 600.00'	R = 600.00'

PROJECT REFERENCE NO. 1-5878	SHEET NO. 58
RW SHEET NO.	
ROADWAY DESIGN ENGINEER SUSAN C. LANCASTER SEAL 027373 5/13/2021	HYDRAULICS ENGINEER JOSHUA G. DALTON SEAL 26971 5/12/2021
DOCUMENT NOT CONSIDERED FINAL UNLESS ALL SIGNATURES COMPLETED	
Michael Baker Engineering, Inc. INTERNATIONAL	SUNGATE DESIGN GROUP, P.A.



R:\02-APP-2021\0101016-59868.Rdly.psh\_58.dgn  
 5/14/2021 10:16:33 AM