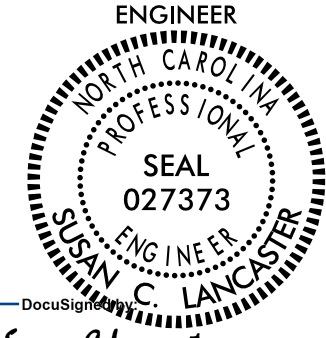
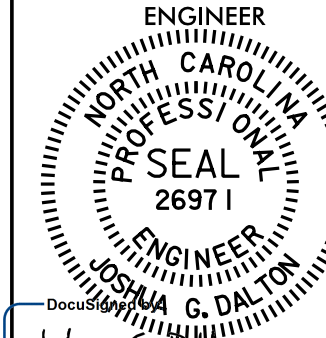
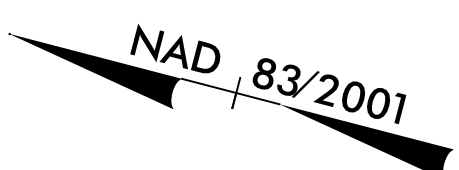
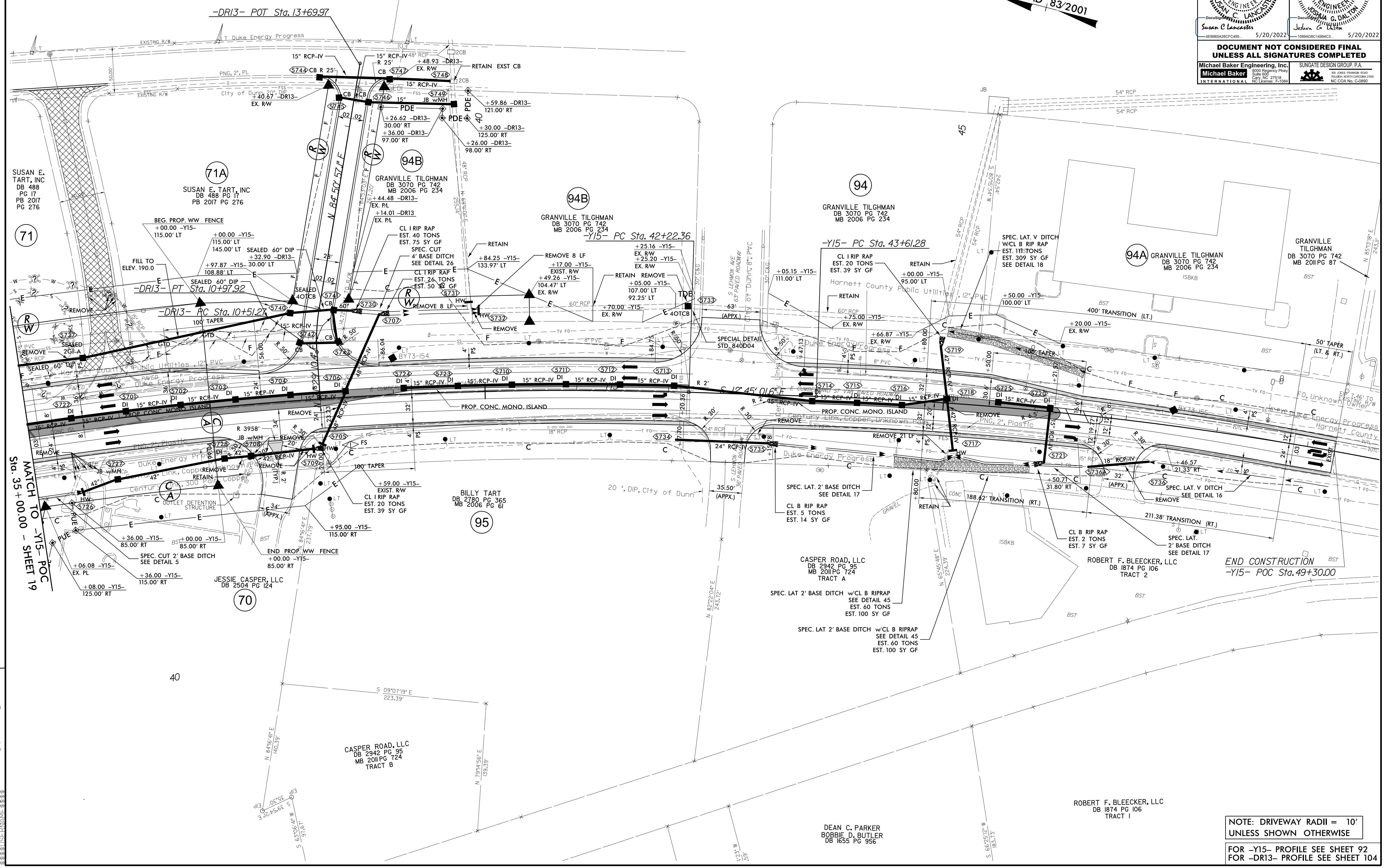


PROJECT REFERENCE NO. 1-5878	SHEET NO. 57
RW SHEET NO.	
ROADWAY DESIGN ENGINEER 	HYDRAULICS ENGINEER 
Susan C. Lancaster 5/20/2022	Joshua G. Dalton 5/20/2022
DOCUMENT NOT CONSIDERED FINAL UNLESS ALL SIGNATURES COMPLETED	
Michael Baker Engineering, Inc. INTERNATIONAL	SUNGATE DESIGN GROUP, P.A.

-Y15-			-DRI3-		
PI Sta 38+05.01	PI Sta 46+74.39	PI Sta 51+44.51	PI Sta 10+74.70		
$\Delta = 12^{\circ}00'00.0''$ (RT)	$\Delta = 9^{\circ}12'39.1''$ (RT)	$\Delta = 2^{\circ}42'26.3''$ (RT)	$\Delta = 13^{\circ}21'46.6''$ (RT)		
D = 125' 56.6"	D = 128' 26.4"	D = 0' 51' 18.0"	D = 28' 38' 52.4"		
L = 837.76'	L = 624.89'	L = 316.64'	L = 46.65'		
T = 420.42'	T = 313.12'	T = 158.35'	T = 23.43'		
R = 4,000.00'	R = 3,887.07'	R = 6,701.26'	R = 200.00'		



REVISIONS
 05/16/22 - RW REVISION: REVISED PROPERTY LINE (NOW RW LINE) BETWEEN PARCEL 71A AND 94B. REVISED RW, TCE, AND ADDED PDE ON PARCEL 94B. SCL
 05/16/22 - CONST. REVISIONS: ADDED -DRI3- ON PARCEL 71A AND REVISED DRAINAGE ALONG -Y15- AND -DRI3-. SCL



5/14/2022
 R:\0-MAY-2022-10445-99868-Rdly_psh-57.dgn
 10:45:53 AM

NOTE: DRIVEWAY RADII = 10'
 UNLESS SHOWN OTHERWISE
 FOR -Y15- PROFILE SEE SHEET 92
 FOR -DRI3- PROFILE SEE SHEET 104