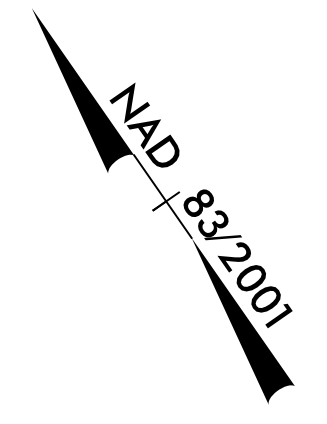
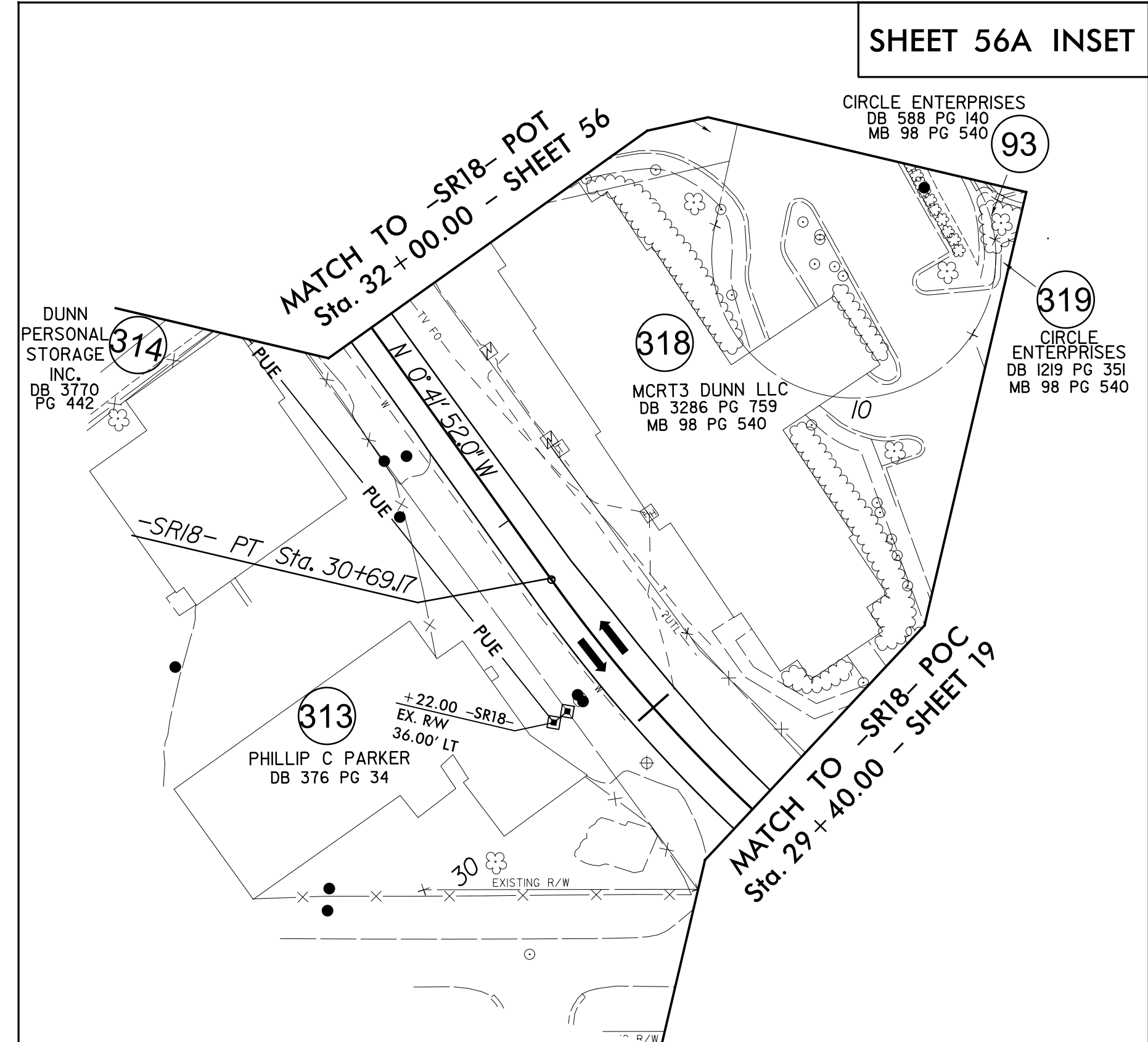
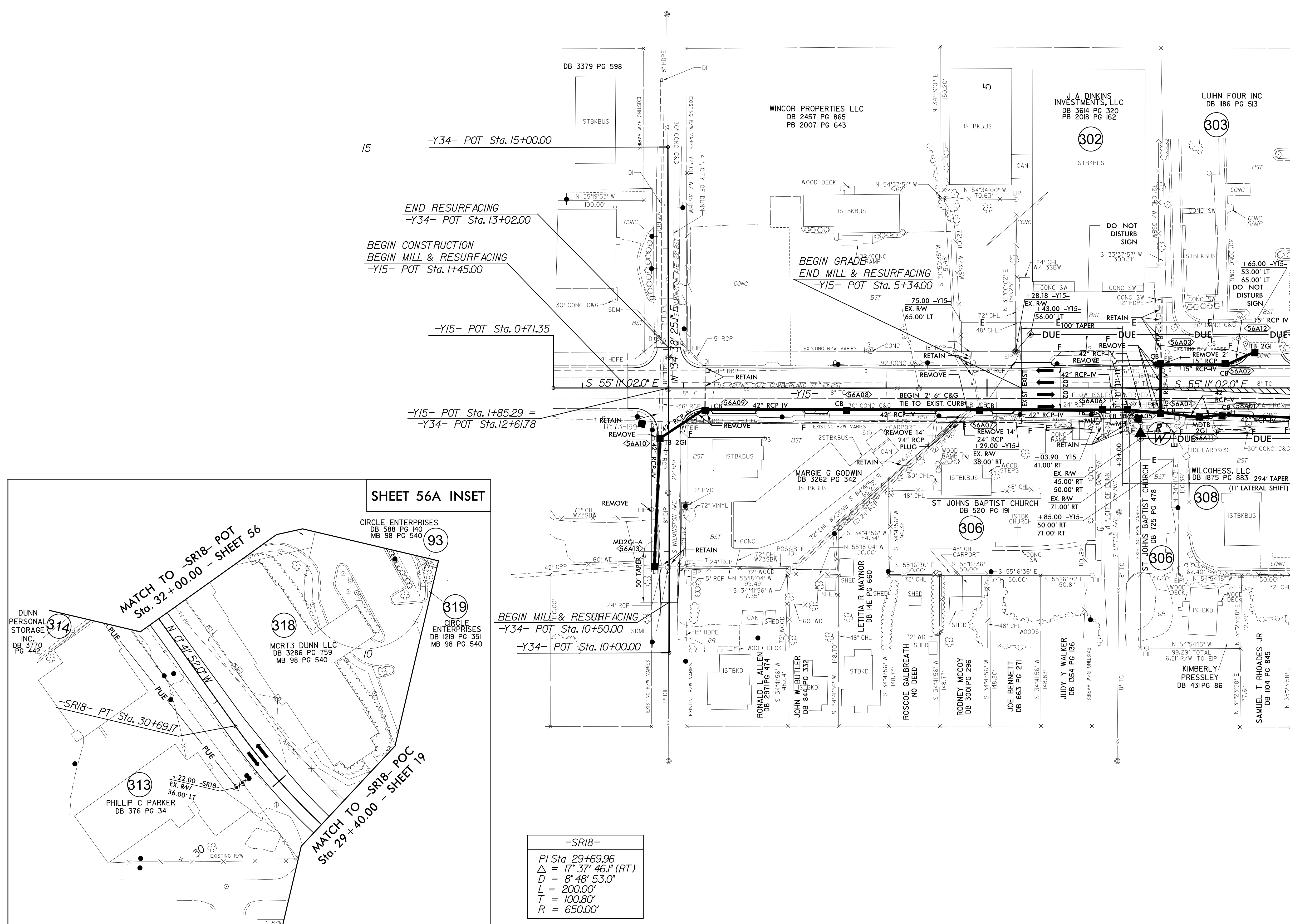


PROJECT REFERENCE NO. 1-5878		SHEET NO. 56A	
RW SHEET NO.			
ROADWAY DESIGN ENGINEER		HYDRAULICS ENGINEER	
Susan C. Lancaster 9/21/2021		Joshua G. Dalton 9/21/2021	
DOCUMENT NOT CONSIDERED FINAL UNLESS ALL SIGNATURES COMPLETED			



MATCH TO -Y15- POT Sta. 8+00.00 - SHEET 56



-SR18-	
PI	Sta 29+69.96
Δ	= 17° 37' 46.1" (RT)
D	= 8' 48' 53.0"
L	= 200.00'
T	= 100.80'
R	= 650.00'

NOTE: DRIVEWAY RADII = 10'
UNLESS SHOWN OTHERWISE

FOR -Y15- PROFILE SEE SHEET 91
FOR -SR18- PROFILE SEE SHEET 106

09/22/21 - RW REVISION: COMBINED PARCEL 307 WITH PARCEL 306. SCL

8/17/19
8/17/2021 10:55
P:\REP-2021\0855
833830151\159868_Rdy_psh_56A.dgn