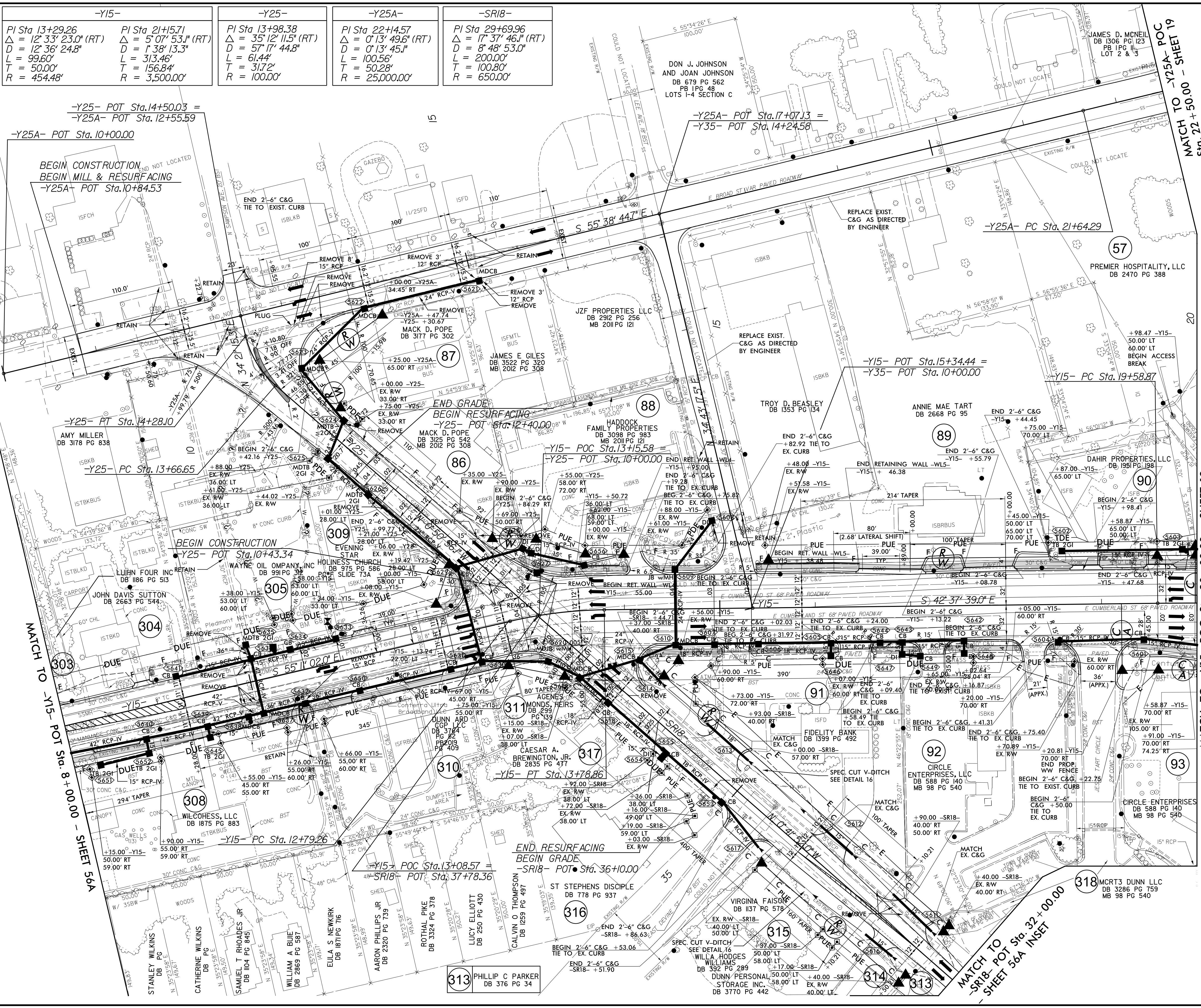
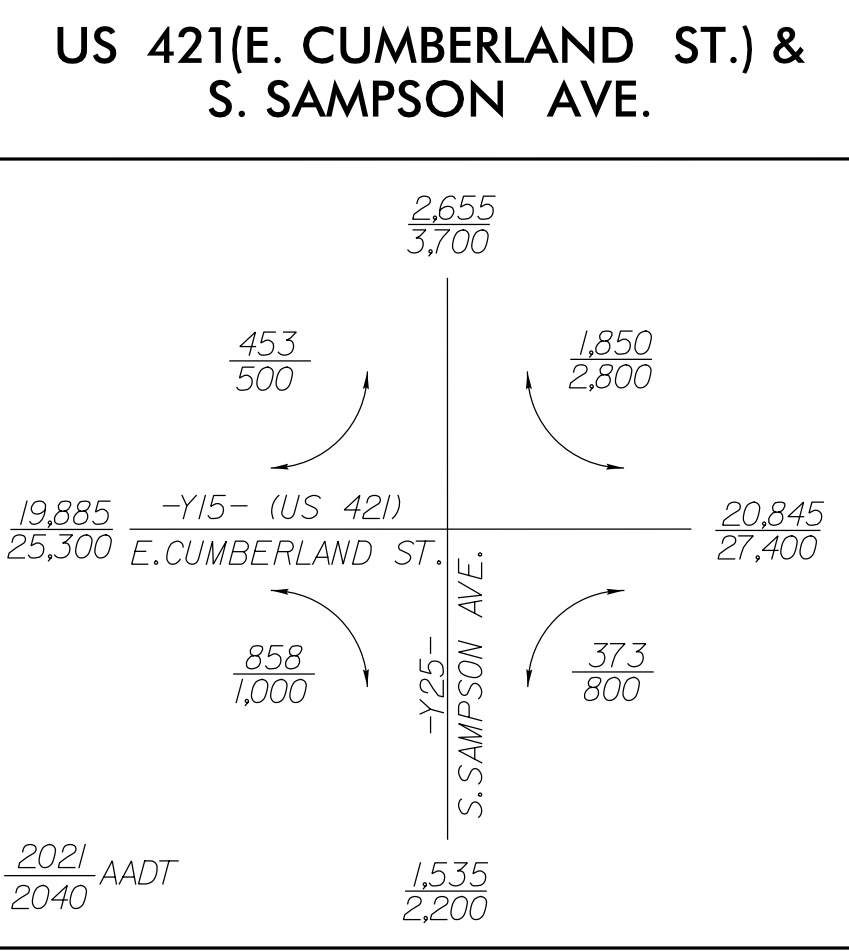
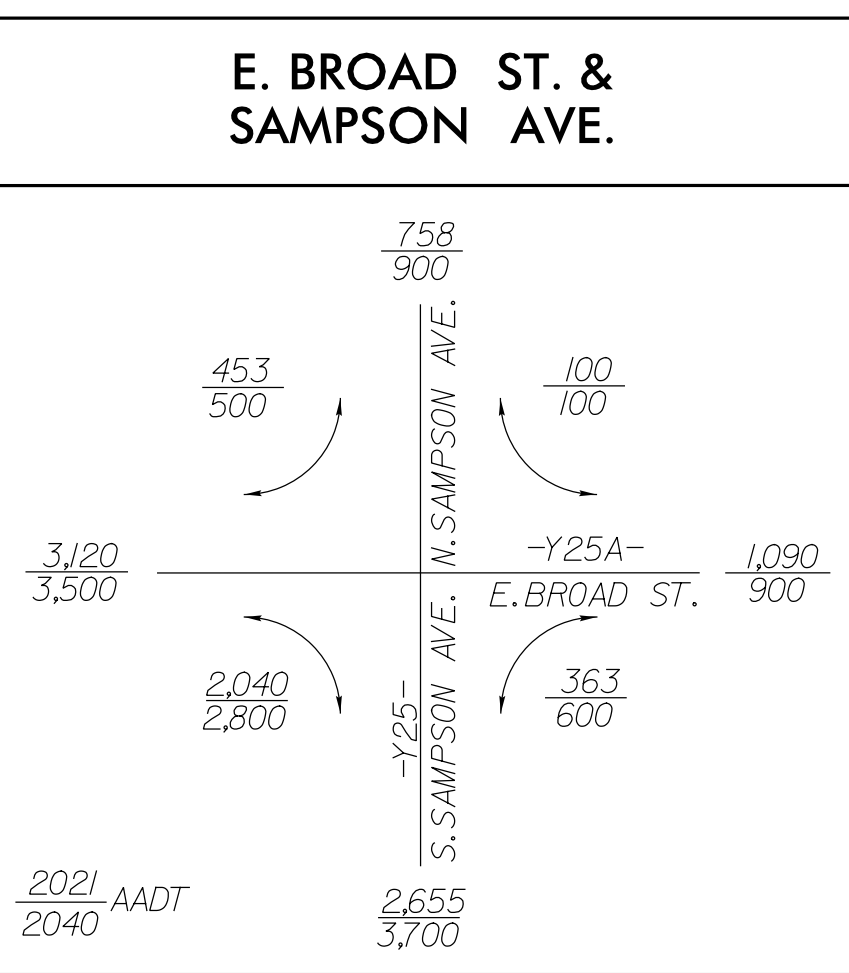
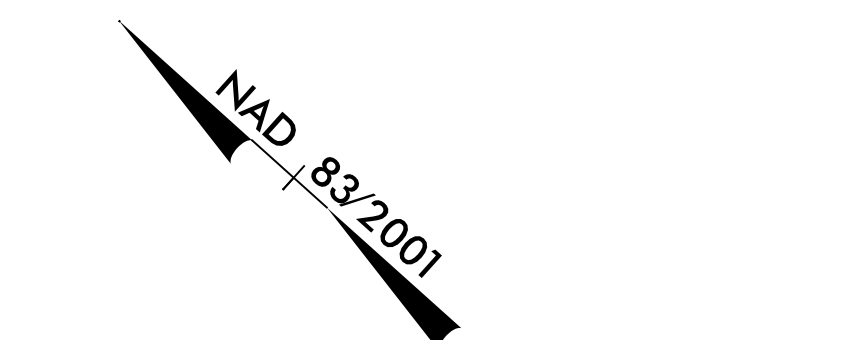


5/14/1999
01-APR-2021 08:44 - 59866.Rdy.psh.56.dgn
3:53:50 PM



<p>-Y15-</p> <p>PI Sta 13+29.26 Δ = 12° 33' 23.0" (RT) D = 12' 36" 24.8" L = 99.60' T = 50.00' R = 454.48'</p>	<p>PI Sta 21+15.71 Δ = 5° 07' 53.1" (RT) D = 1' 38" 13.3" L = 313.46' T = 156.84' R = 3,500.00'</p>	<p>-Y25-</p> <p>PI Sta 13+98.38 Δ = 35° 12' 11.5" (RT) D = 57' 17" 44.8" L = 100.56' T = 31.72' R = 100.00'</p>	<p>-Y25A-</p> <p>PI Sta 22+14.57 Δ = 0° 13' 49.6" (RT) D = 0' 13" 45.1" L = 100.56' T = 50.28' R = 25,000.00'</p>	<p>-SR18-</p> <p>PI Sta 29+69.96 Δ = 17° 37' 46.1" (RT) D = 8' 48" 53.0" L = 200.00' T = 100.80' R = 650.00'</p>
--	---	---	---	--

PROJECT REFERENCE NO. 1-5878	SHEET NO. 56
ROADWAY DESIGN ENGINEER SUSAN C. LANCASTER Professional Seal 027373	HYDRAULICS ENGINEER JOSHUA G. DALTON Professional Seal 26971
DocuSign Susan C. Lancaster 5/13/2021	DocuSign Joshua G. Dalton 5/12/2021
DOCUMENT NOT CONSIDERED FINAL UNLESS ALL SIGNATURES COMPLETED	
Michael Baker Engineering, Inc. 1800 Regency Park Raleigh, NC 27618 INTERNATIONAL	SUNGATE DESIGN GROUP, P.A. 10000 WOODBRIDGE BLVD FALLS CHURCH, VA 22034 SUNGATE DESIGN GROUP, P.A. 10000 WOODBRIDGE BLVD FALLS CHURCH, VA 22034



NOTE: DRIVEWAY RADII = 10' UNLESS SHOWN OTHERWISE

FOR -Y15- PROFILE SEE SHEET 91
FOR -Y25- PROFILE SEE SHEET 101
FOR -Y25A- PROFILE SEE SHEET 101
FOR -SR18- PROFILE SEE SHEET 106