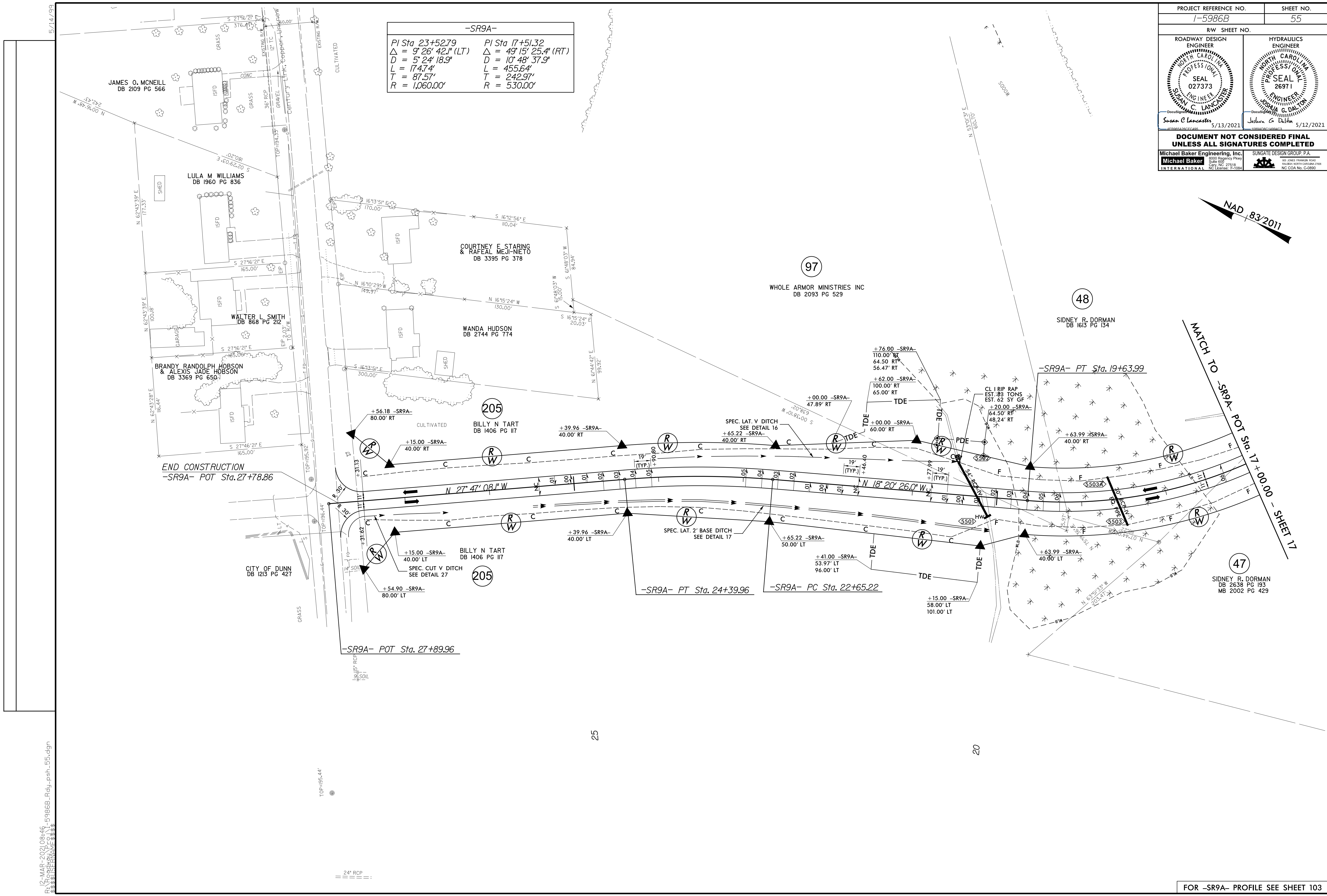


PROJECT REFERENCE NO. <b>1-5986B</b>	SHEET NO. <b>55</b>
RW SHEET NO.	
ROADWAY DESIGN ENGINEER <b>Susan C. Lancaster</b> Professional Seal: 027373 5/13/2021	HYDRAULICS ENGINEER <b>Joshua G. Dalton</b> Professional Seal: 26971 5/12/2021
DOCUMENT NOT CONSIDERED FINAL UNLESS ALL SIGNATURES COMPLETED	
Michael Baker Engineering, Inc. 1500 Piedmont Parkway Suite 600 Cary, NC 27518 NC License: T-1094	SUNGATE DESIGN GROUP, P.A. 10000 SunGate Parkway Suite 100 Raleigh, NC 27615 NC License: T-1094

-SR9A-	
PI Sta 23+52.79	PI Sta 17+51.32
$\Delta = 9' 26' 42.1''$ (LT)	$\Delta = 49' 15' 25.4''$ (RT)
D = 5' 24' 18.9"	D = 10' 48' 37.9"
L = 174.74'	L = 455.64'
T = 87.57'	T = 242.97'
R = 1,060.00'	R = 530.00'



12-MAR-2021 08:46 - 5986B\_Rdly\_psh\_55.dgn