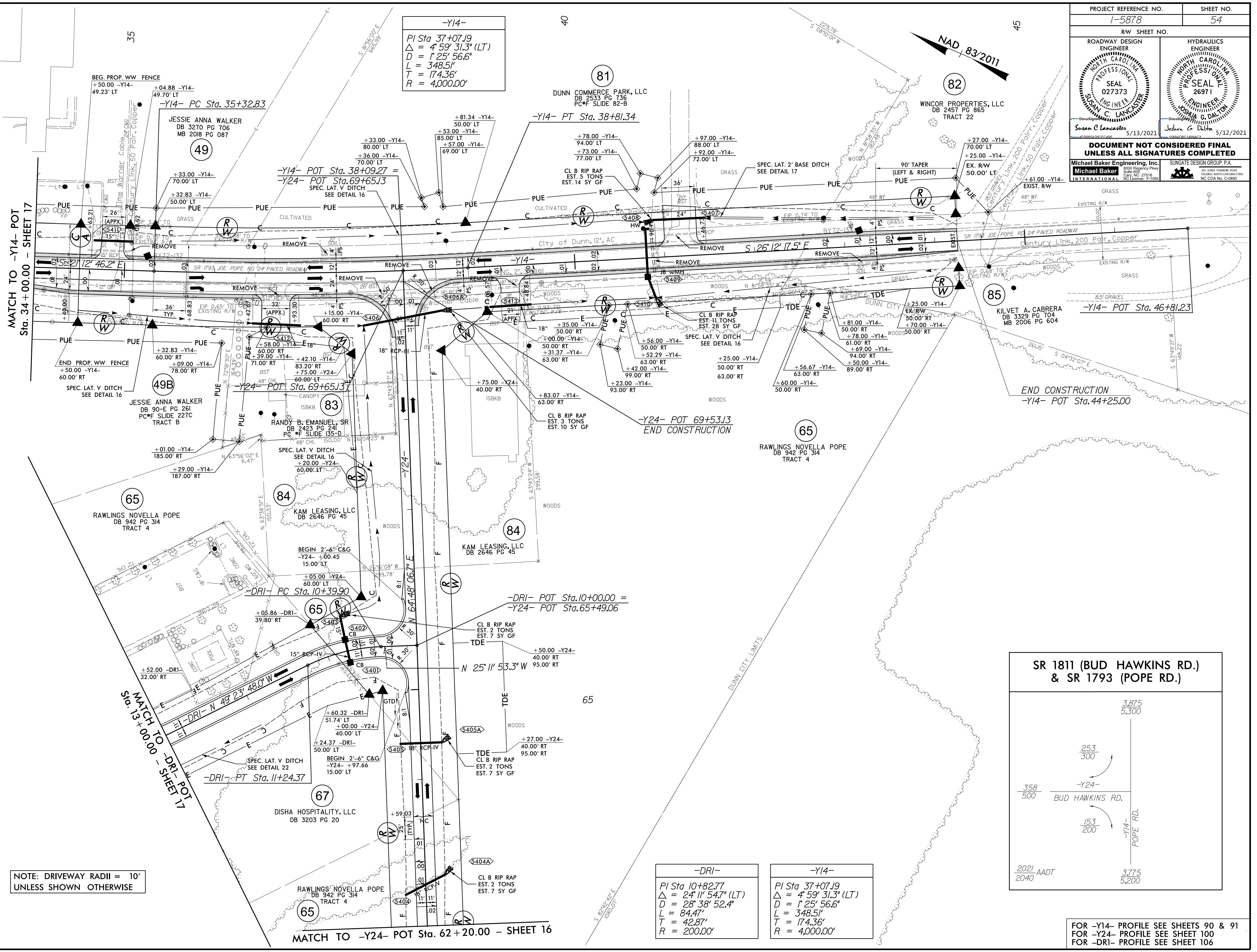


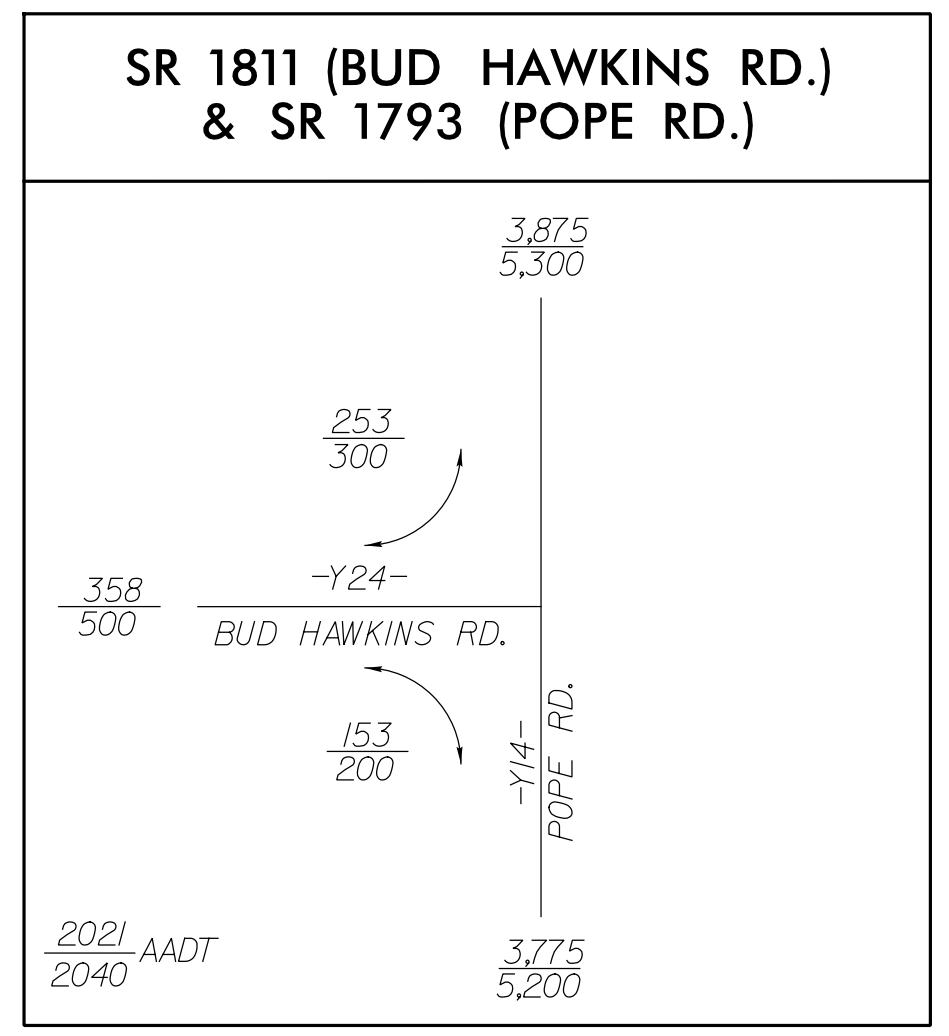
PROJECT REFERENCE NO. 1-5878	SHEET NO. 54
RW SHEET NO.	
ROADWAY DESIGN ENGINEER SEAL 027373 SUSAN C. LANCASTER	HYDRAULICS ENGINEER SEAL 26971 JOSHUA G. DALTON
Document: Susan C. Lancaster 5/13/2021	Document: Joshua G. Dalton 5/12/2021
DOCUMENT NOT CONSIDERED FINAL UNLESS ALL SIGNATURES COMPLETED	
Michael Baker Engineering, Inc. 8000 Regency Park Suite 800 Cary, NC 27518 NC License: P-1094	SUNGATE DESIGN GROUP, P.A. 100 WEST HARRIS ROAD FALCON NORTH CAROLINA 27008 NC CDA No. C-8890



-Y14-
 $PI\ Sta\ 37+07.19$
 $\Delta = 4' 59'' 31.3'' (LT)$
 $D = 1' 25'' 56.6''$
 $L = 348.51'$
 $T = 174.36'$
 $R = 4,000.00'$

-DRI-
 $PI\ Sta\ 10+82.77$
 $\Delta = 24' 11'' 54.7'' (LT)$
 $D = 28' 38'' 52.4''$
 $L = 84.47'$
 $T = 42.87'$
 $R = 200.00'$

-Y14-
 $PI\ Sta\ 37+07.19$
 $\Delta = 4' 59'' 31.3'' (LT)$
 $D = 1' 25'' 56.6''$
 $L = 348.51'$
 $T = 174.36'$
 $R = 4,000.00'$



NOTE: DRIVEWAY RADII = 10'
UNLESS SHOWN OTHERWISE

FOR -Y14- PROFILE SEE SHEETS 90 & 91
 FOR -Y24- PROFILE SEE SHEET 100
 FOR -DRI- PROFILE SEE SHEET 106

REVISIONS

R:\12-MAR-2021\08146-5986B_Rdly_psh_54.dgn
 5/14/2021 10:00:00 AM