

PROJECT REFERENCE NO. <b>1-5986B</b>	SHEET NO. <b>46</b>
RW SHEET NO.	
ROADWAY DESIGN ENGINEER <b>Susan C Lancaster</b> Professional Seal 027373 5/13/2021	HYDRAULICS ENGINEER <b>Joshua G Dalton</b> Professional Seal 26971 5/12/2021
<p><b>DOCUMENT NOT CONSIDERED FINAL</b> <b>UNLESS ALL SIGNATURES COMPLETED</b></p>	
Michael Baker Engineering, Inc. 1800 Piedmont Parkway Suite 800 Cary, NC 27518 NC License: P-1084	SUNGATE DESIGN GROUP, P.A. 10000 Sunbelt Parkway Raleigh, NC 27617 NC License: C-8890

**-Y19RCA-**

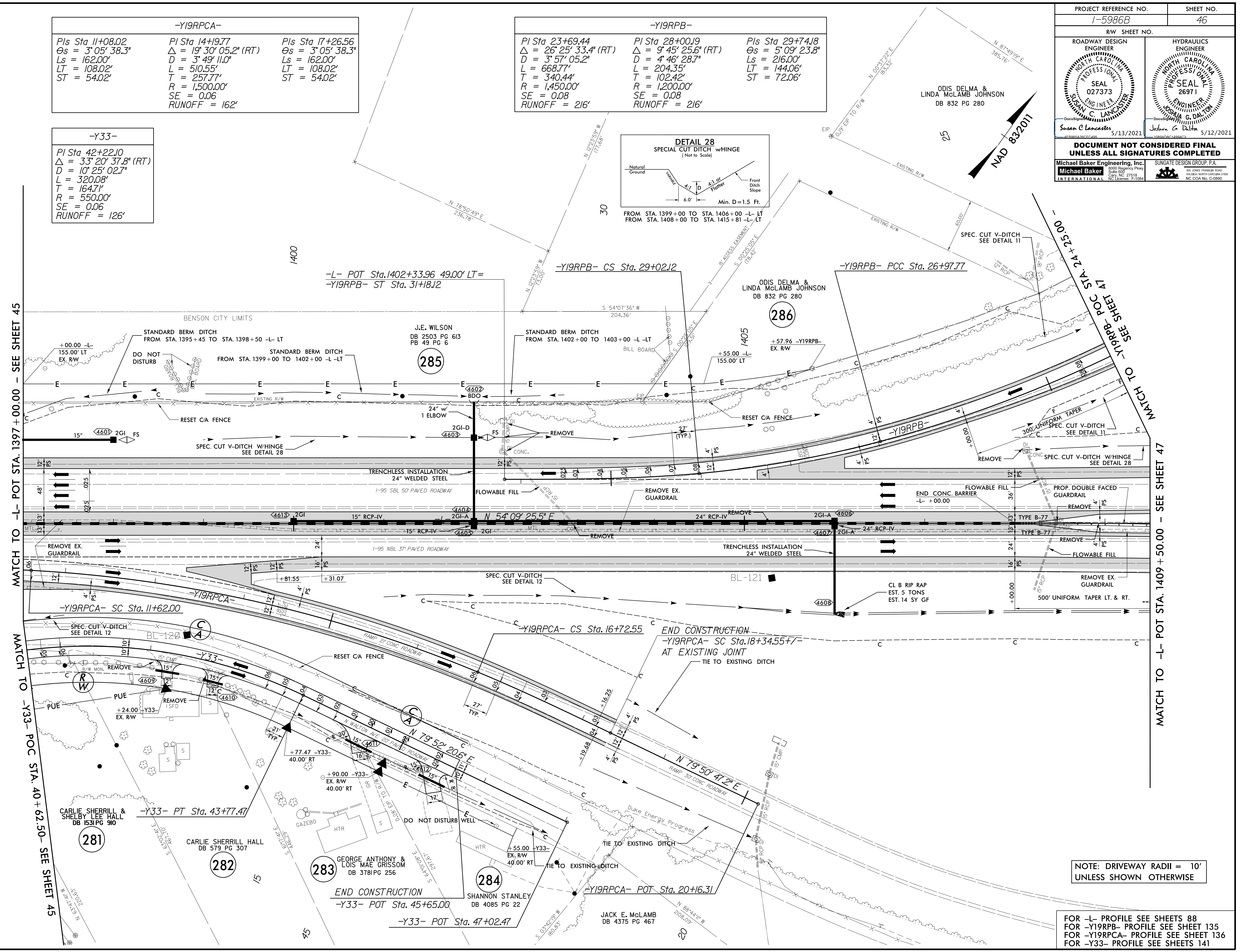
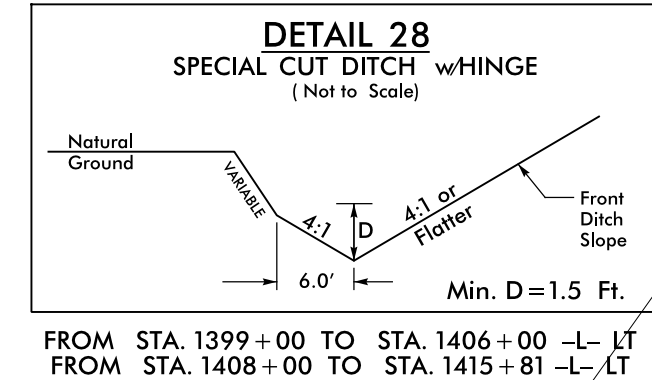
PIs Sta 11+08.02 Δs = 3° 05' 38.3" Ls = 162.00' LT = 108.02' ST = 54.02'	PI Sta 14+19.77 Δ = 19° 30' 05.2" (RT) D = 3° 49' 11.0" L = 510.55' T = 257.77' R = 1,500.00' SE = 0.06 RUNOFF = 162'	PIs Sta 17+26.56 Δs = 3° 05' 38.3" Ls = 162.00' LT = 108.02' ST = 54.02'
--	--	--

**-Y19RPB-**

PI Sta 23+69.44 Δ = 26° 25' 33.4" (RT) D = 3° 57' 05.2" L = 668.77' T = 340.44' R = 1,450.00' SE = 0.08 RUNOFF = 216'	PI Sta 28+00.19 Δ = 9° 45' 25.6" (RT) D = 4° 46' 28.7" L = 204.35' T = 102.42' R = 1,200.00' SE = 0.08 RUNOFF = 216'	PIs Sta 29+74.18 Δs = 5° 09' 23.8" Ls = 216.00' LT = 144.06' ST = 72.06'
--	---	--

**-Y33-**

PI Sta 42+22.10 Δ = 33° 20' 37.8" (RT) D = 10° 25' 02.7" L = 320.08' T = 164.71' R = 550.00' SE = 0.06 RUNOFF = 126'
---



MATCH TO -L- POT STA. 1397+00.00 - SEE SHEET 45

MATCH TO -Y33- POC STA. 40+62.50 - SEE SHEET 45

MATCH TO -Y19RPB- POC STA. 24+25.00 - SEE SHEET 47

MATCH TO -L- POT STA. 1409+50.00 - SEE SHEET 47

NOTE: DRIVEWAY RADII = 10'  
UNLESS SHOWN OTHERWISE

FOR -L- PROFILE SEE SHEETS 88  
FOR -Y19RPB- PROFILE SEE SHEET 135  
FOR -Y19RCA- PROFILE SEE SHEET 136  
FOR -Y33- PROFILE SEE SHEETS 141

REVISIONS

12-MAR-2021 08:55 - 5986B\_Rdly\_psh\_46.dgn  
S:\Projects\15986B\15986B.dwg