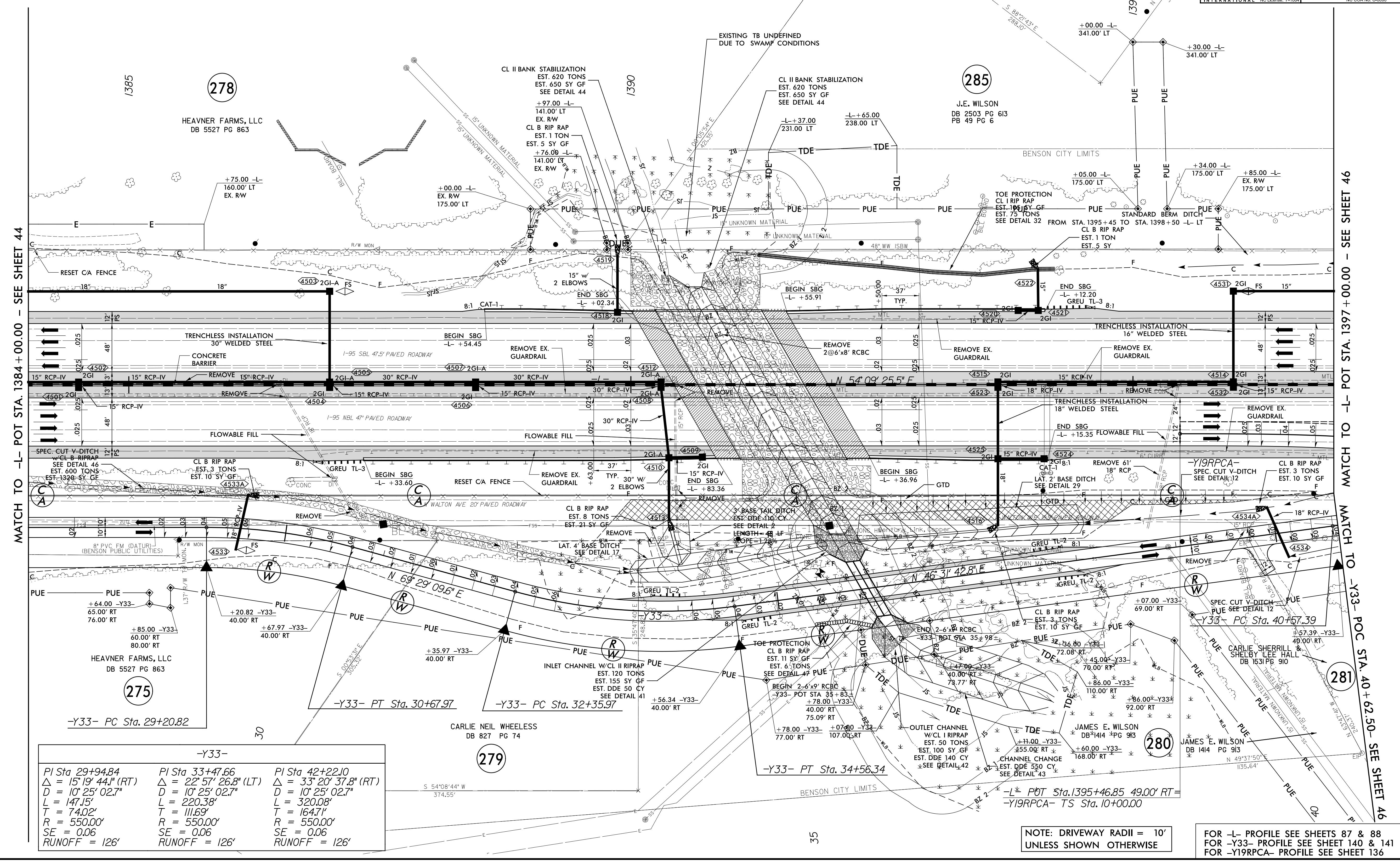


PROJECT REFERENCE NO. 1-5986B	SHEET NO. 45
RW SHEET NO.	
ROADWAY DESIGN ENGINEER SUSAN C. LANCASTER SEAL 027373 NORTH CAROLINA PROFESSIONAL ENGINEER	HYDRAULICS ENGINEER JOSHUA G. DALTON SEAL 26971 NORTH CAROLINA PROFESSIONAL ENGINEER
Susan C. Lancaster 5/13/2021	Joshua G. Dalton 5/12/2021
DOCUMENT NOT CONSIDERED FINAL UNLESS ALL SIGNATURES COMPLETED	
Michael Baker Engineering, Inc. 1800 Prosperity Place Raleigh, NC 27615 MICHAEL BAKER INTERNATIONAL	SUNGATE DESIGN GROUP, P.A. 10000 W. WOODHOLLOW ROAD RALEIGH, NORTH CAROLINA 27615 NC CDA No. C-8890

-Y19RPCA-		
Pls Sta 11+08.02 Os = 3° 05' 38.3" Ls = 162.00' LT = 108.02' ST = 54.02'	Pls Sta 14+9.77 Δ = 19° 30' 05.2" (RT) D = 3° 49' 11.0" L = 510.55' T = 257.77' R = 1,500.00' SE = 0.06 RUNOFF = 162'	Pls Sta 17+26.56 Os = 3° 05' 38.3" Ls = 162.00' LT = 108.02' ST = 54.02'



-Y33-		
Pls Sta 29+94.84 Δ = 15° 19' 44.1" (RT) D = 10° 25' 02.7" L = 147.15' T = 74.02' R = 550.00' SE = 0.06 RUNOFF = 126'	Pls Sta 33+47.66 Δ = 22° 57' 26.8" (LT) D = 10° 25' 02.7" L = 220.38' T = 111.69' R = 550.00' SE = 0.06 RUNOFF = 126'	Pls Sta 42+22.10 Δ = 33° 20' 37.8" (RT) D = 10° 25' 02.7" L = 320.08' T = 164.71' R = 550.00' SE = 0.06 RUNOFF = 126'

NOTE: DRIVEWAY RADII = 10'
UNLESS SHOWN OTHERWISE

FOR -L- PROFILE SEE SHEETS 87 & 88
FOR -Y33- PROFILE SEE SHEET 140 & 141
FOR -Y19RPCA- PROFILE SEE SHEET 136

REVISIONS

MATCH TO -L- POT STA. 1384+00.00 - SEE SHEET 44

MATCH TO -L- POT STA. 1397+00.00 - SEE SHEET 46

MATCH TO -Y33- POC STA. 40+62.50 - SEE SHEET 46

5/14/99

PA: 03-APR-2021 13:20:5986B_RdJ_psh_45.dgn
3:33:30 PM