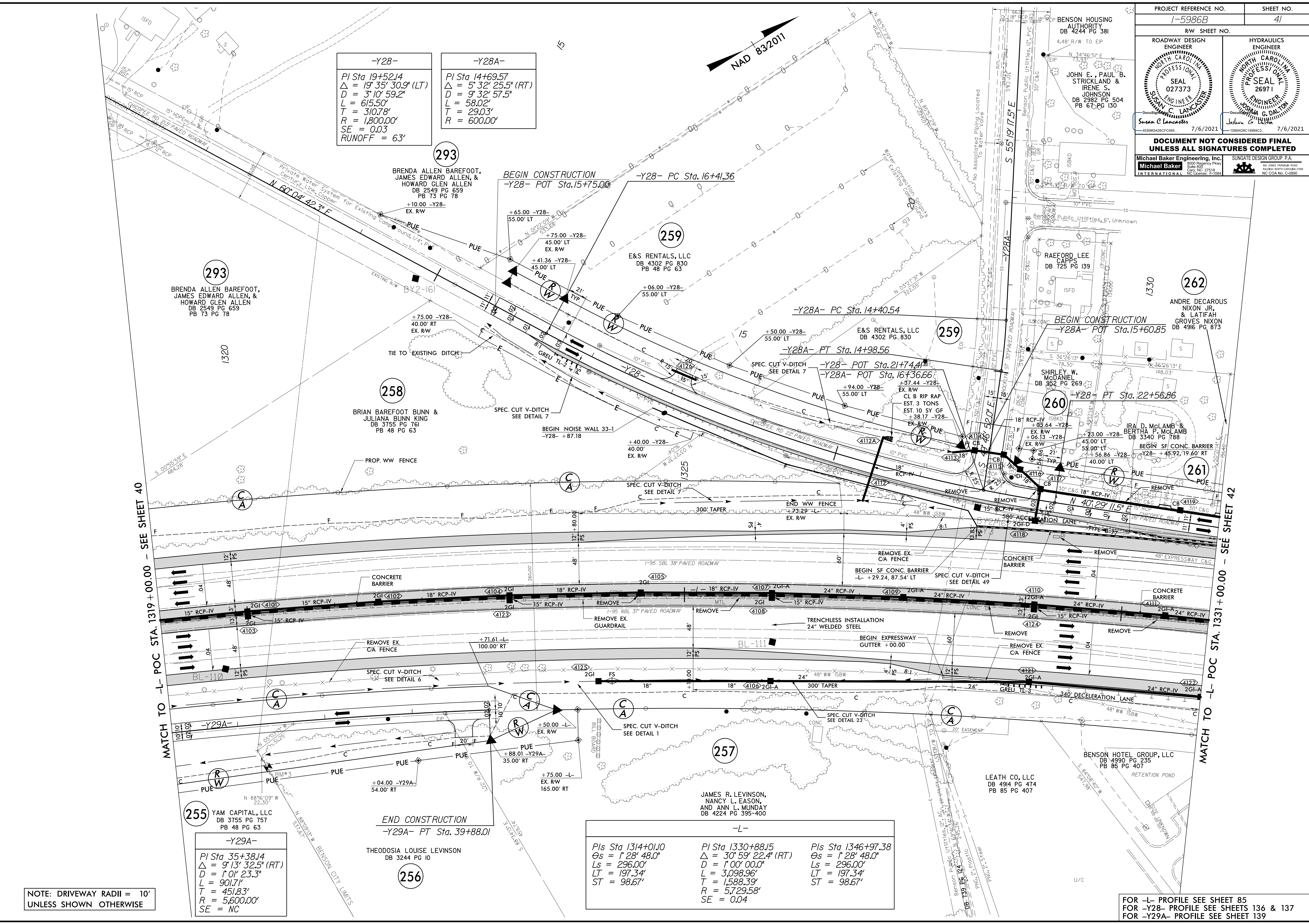


PROJECT REFERENCE NO. 1-5986B		SHEET NO. 41	
ROADWAY DESIGN ENGINEER			
HYDRAULICS ENGINEER			
DOCUMENT NOT CONSIDERED FINAL UNLESS ALL SIGNATURES COMPLETED			



<p>-Y28-</p> <p>PI Sta 19+52.14 $\Delta = 19^\circ 35' 30.9''$ (LT) $D = 3^\circ 10' 59.2''$ $L = 615.50'$ $T = 310.78'$ $R = 1,800.00'$ $SE = 0.03$ $RUNOFF = 63'$</p>	<p>-Y28A-</p> <p>PI Sta 14+69.57 $\Delta = 5^\circ 32' 25.5''$ (RT) $D = 9^\circ 32' 57.5''$ $L = 58.02'$ $T = 29.03'$ $R = 600.00'$</p>
--	---

<p>-Y29A-</p> <p>PI Sta 35+38.14 $\Delta = 9^\circ 13' 32.5''$ (RT) $D = 1^\circ 0' 23.3''$ $L = 901.71'$ $T = 451.83'$ $R = 5,600.00'$ $SE = NC$</p>
--

<p>-L-</p> <p>PIs Sta 1314+01.0 $\Delta s = 1^\circ 28' 48.0''$ $D = 296.00'$ $LT = 197.34'$ $ST = 98.67'$</p>	<p>PI Sta 1330+88.15 $\Delta = 30^\circ 59' 22.4''$ (RT) $D = 1^\circ 00' 00.0''$ $L = 3,098.96'$ $T = 1,588.39'$ $R = 5,729.58'$ $SE = 0.04$</p>	<p>PIs Sta 1346+97.38 $\Delta s = 1^\circ 28' 48.0''$ $D = 296.00'$ $LT = 197.34'$ $ST = 98.67'$</p>
---	---	--

NOTE: DRIVEWAY RADII = 10' UNLESS SHOWN OTHERWISE

FOR -L- PROFILE SEE SHEET 85
 FOR -Y28- PROFILE SEE SHEETS 136 & 137
 FOR -Y29A- PROFILE SEE SHEET 139

REVISIONS

MATCH TO -L- POC STA. 1319+00.00 - SEE SHEET 40

MATCH TO -L- POC STA. 1331+00.00 - SEE SHEET 42

R:\02-JUL-2021\1103-5986B-Rdy-psh-41.dgn