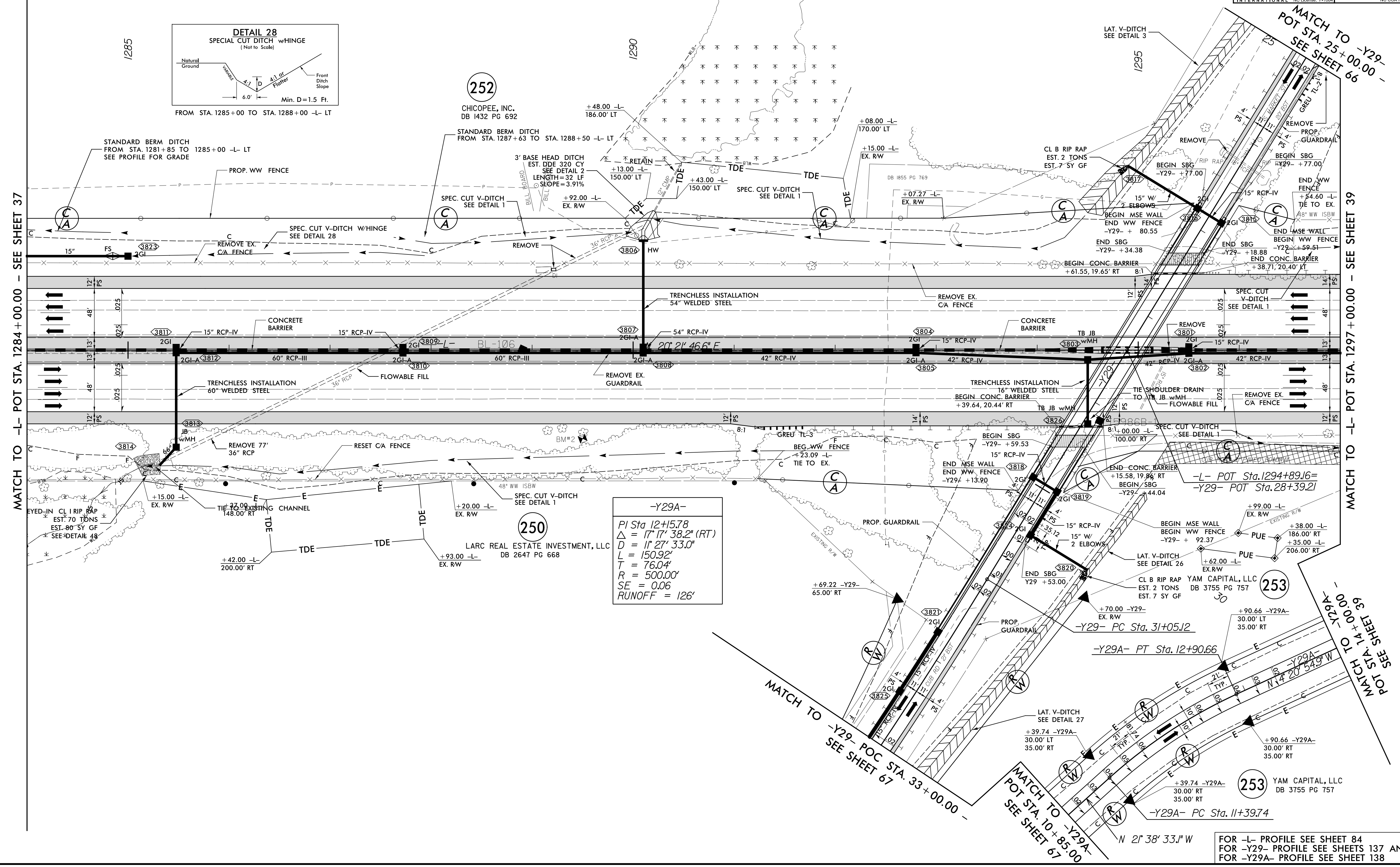
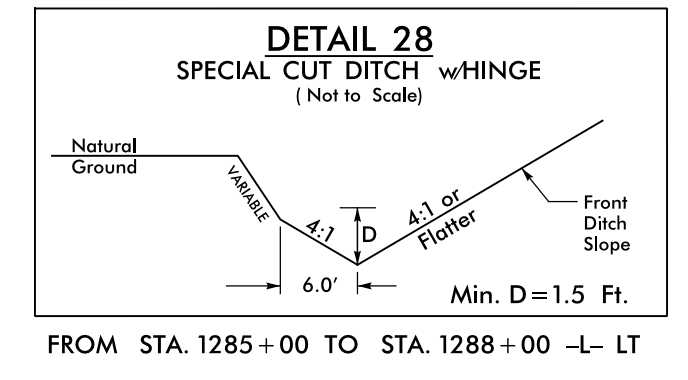


5/14/2021

-Y29-
 PI Sta 32+64.68
 $\Delta = 3^{\circ} 43' 18.1'' (RT)$
 $D = 1^{\circ} 10' 00.0''$
 $L = 319.00'$
 $T = 159.56'$
 $R = 4,911.07'$
 $SE = 0.02$
 $RUNOFF = 42'$

PROJECT REFERENCE NO. 1-5986B	SHEET NO. 38
RW SHEET NO.	
ROADWAY DESIGN ENGINEER SUSAN C LANCASTER SEAL 027373 NORTH CAROLINA PROFESSIONAL ENGINEER	HYDRAULICS ENGINEER JOSHUA G DALTON SEAL 26971 NORTH CAROLINA PROFESSIONAL ENGINEER
Susan C Lancaster 5/13/2021	Joshua G Dalton 5/12/2021
DOCUMENT NOT CONSIDERED FINAL UNLESS ALL SIGNATURES COMPLETED	
Michael Baker Engineering, Inc. INTERNATIONAL	SUNGATE DESIGN GROUP, P.A.



-Y29A-
 PI Sta 12+15.78
 $\Delta = 17^{\circ} 17' 38.2'' (RT)$
 $D = 1^{\circ} 27' 33.0''$
 $L = 150.92'$
 $T = 76.04'$
 $R = 500.00'$
 $SE = 0.06$
 $RUNOFF = 126'$

REVISIONS

06-APR-2021 12:04-5986B_Rdly_psh_38.dgn

FOR -L- PROFILE SEE SHEET 84
 FOR -Y29- PROFILE SEE SHEETS 137 AND 138
 FOR -Y29A- PROFILE SEE SHEET 138