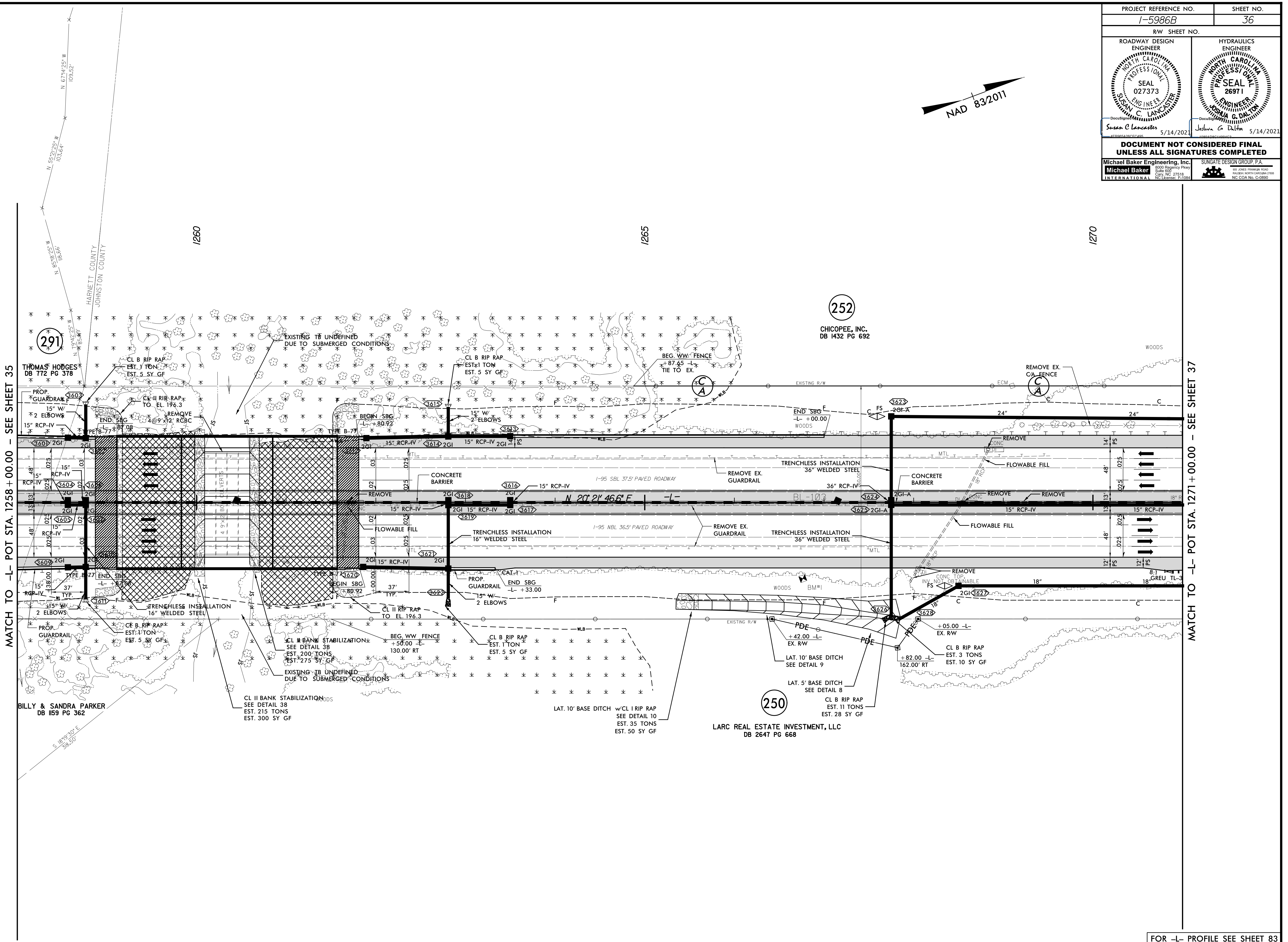
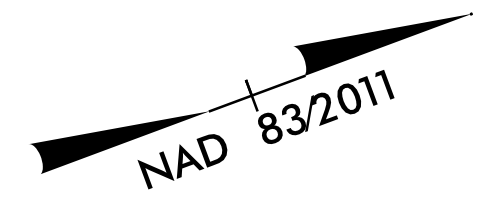


PROJECT REFERENCE NO. 1-5986B	SHEET NO. 36
RW SHEET NO.	
ROADWAY DESIGN ENGINEER SUSAN C LANCASTER SEAL 027373 NORTH CAROLINA PROFESSIONAL ENGINEER	HYDRAULICS ENGINEER JOSHUA G DALTON SEAL 26971 NORTH CAROLINA PROFESSIONAL ENGINEER
DocuSign Susan C Lancaster 5/14/2021	DocuSign Joshua G Dalton 5/14/2021
DOCUMENT NOT CONSIDERED FINAL UNLESS ALL SIGNATURES COMPLETED	
Michael Baker Engineering, Inc. 1800 Piedmont Parkway Suite 800 Cary, NC 27518 Tel: 919.241.1000 Fax: 919.241.1001 www.mbakergroup.com	SUNGATE DESIGN GROUP, P.A. 10000 SunGate Parkway Raleigh, NC 27617 Tel: 919.276.1000 Fax: 919.276.1001 www.sungatedesign.com



MATCH TO -L- POT STA. 1258 + 00.00 - SEE SHEET 35

MATCH TO -L- POT STA. 1271 + 00.00 - SEE SHEET 37

291
THOMAS HODGES
DB 772 PG 378

252
CHICOPEE, INC.
DB 1432 PG 692

BILLY & SANDRA PARKER
DB 1159 PG 362

250
LARC REAL ESTATE INVESTMENT, LLC
DB 2647 PG 668

5/14/2021 10:52:15 AM R:\13-MAY-2021\512_1-5986B_Rdwy_psh_36.dgn