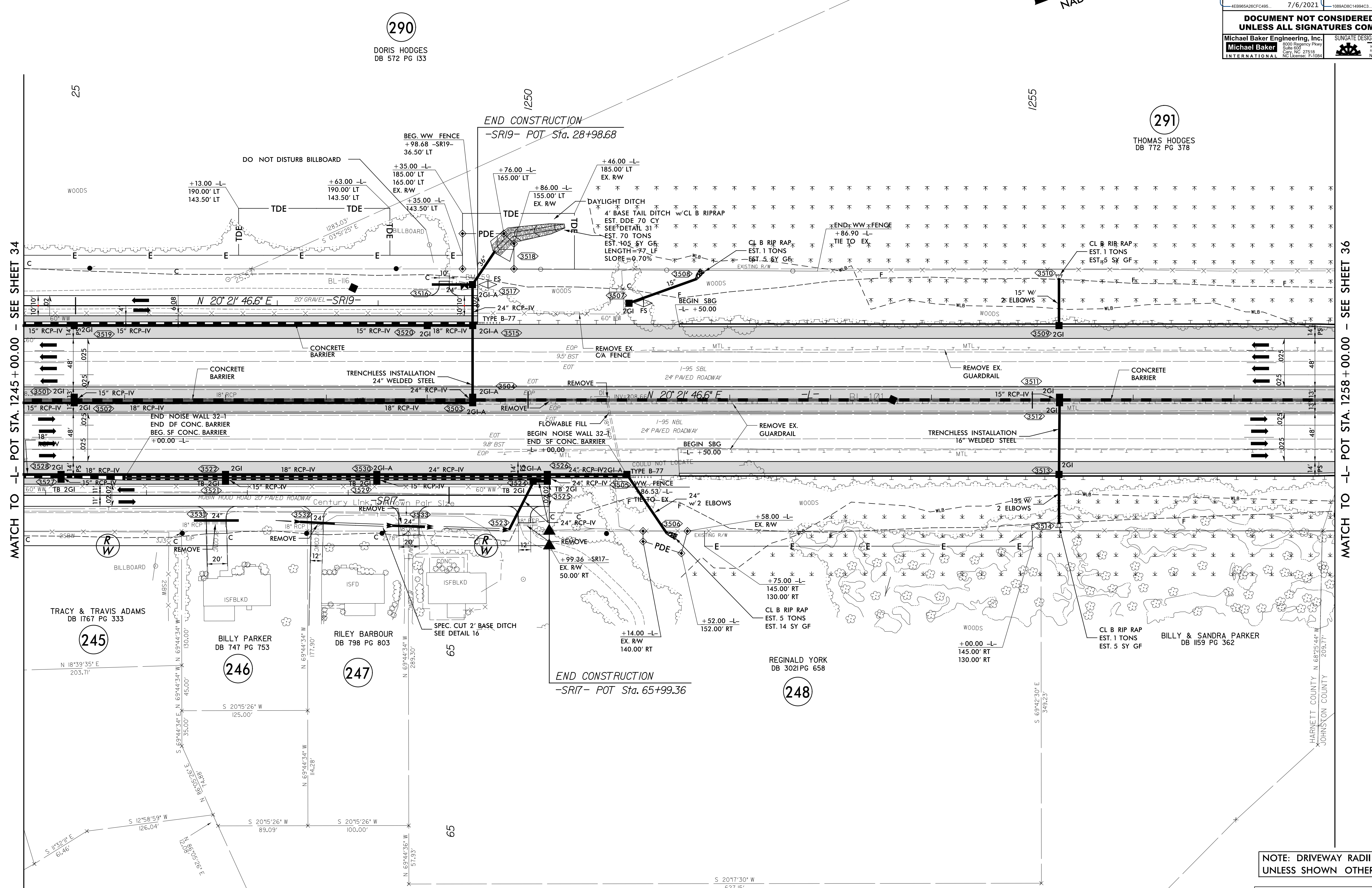
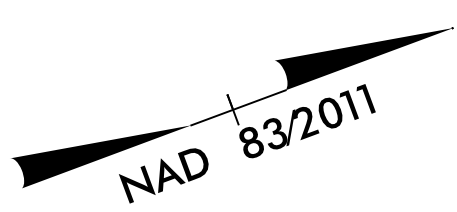


5/14/99

REVISIONS

01-JUL-2021 12:27 P: 5986B_Rdly_psh_35.dgn

PROJECT REFERENCE NO. 1-5986B		SHEET NO. 35	
RW SHEET NO.			
ROADWAY DESIGN ENGINEER SUSAN C. LANCASTER SEAL 027373 NORTH CAROLINA PROFESSIONAL ENGINEER		HYDRAULICS ENGINEER JOSHUA G. DARTON SEAL 26971 NORTH CAROLINA PROFESSIONAL ENGINEER	
7/6/2021		7/6/2021	
DOCUMENT NOT CONSIDERED FINAL UNLESS ALL SIGNATURES COMPLETED			
Michael Baker Engineering, Inc. INTERNATIONAL		SUNGATE DESIGN GROUP, P.A.	



MATCH TO -L- POT STA. 1245 + 00.00 - SEE SHEET 34

MATCH TO -L- POT STA. 1258 + 00.00 - SEE SHEET 36

NOTE: DRIVEWAY RADII = 10' UNLESS SHOWN OTHERWISE

FOR -L- PROFILE SEE SHEET 82
FOR -SR17- PROFILE SEE SHEET 128
FOR -SR19- PROFILE SEE SHEET 142