

|  |   |
|--|---|
| PROJECT REFERENCE NO.<br>1-5883  | SHEET NO.<br>31   |
| RW SHEET NO.   |   |
| ROADWAY DESIGN ENGINEER<br>SUNGATE DESIGN GROUP, P.A.<br>SEAL 027373<br>SUNGATE DESIGN GROUP, P.A.<br>SUNGATE DESIGN GROUP, P.A.<br>SUNGATE DESIGN GROUP, P.A. | HYDRAULICS ENGINEER<br>SUNGATE DESIGN GROUP, P.A.<br>SEAL 26971<br>SUNGATE DESIGN GROUP, P.A.<br>SUNGATE DESIGN GROUP, P.A.<br>SUNGATE DESIGN GROUP, P.A. |
| Susan C. Lancelotti<br>5/13/2021   | Joshua G. Dalton<br>5/12/2021   |
| DOCUMENT NOT CONSIDERED FINAL<br>UNLESS ALL SIGNATURES COMPLETED   |   |
| Michael Baker Engineering, Inc.<br>4000 Regency Place<br>Suite 600<br>Raleigh, NC 27618<br>INTERNATIONAL<br>NC License: P-1084                                 | SUNGATE DESIGN GROUP, P.A.<br>62 JONES FRANKER ROAD<br>RALEIGH, NORTH CAROLINA 27618<br>NC License: C-4890  |

**-L-**

|  |   |
|--|---|
| PI Sta 1177+01.90<br>Δ = 9° 16' 49" (LT)<br>D = 0° 29' 30"<br>L = 1887.52'<br>T = 945.83'<br>R = 11653.38'<br>SE = 0.025<br>RUNOFF = SEE PLANS | PIs Sta 1186+92.92<br>Θs = 0° 21' 50"<br>Ls = 148.00'<br>LT = 98.67'<br>ST = 49.33' |
|--|---|

**-Y17RPB-**

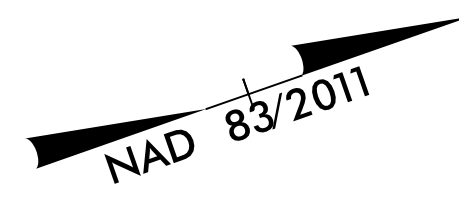
|  |
|--|
| PIs Sta 11+26.02<br>Θs = 2° 58' 30"<br>Ls = 189.00'<br>LT = 126.02'<br>ST = 63.02' |
|--|

**-SR16-**

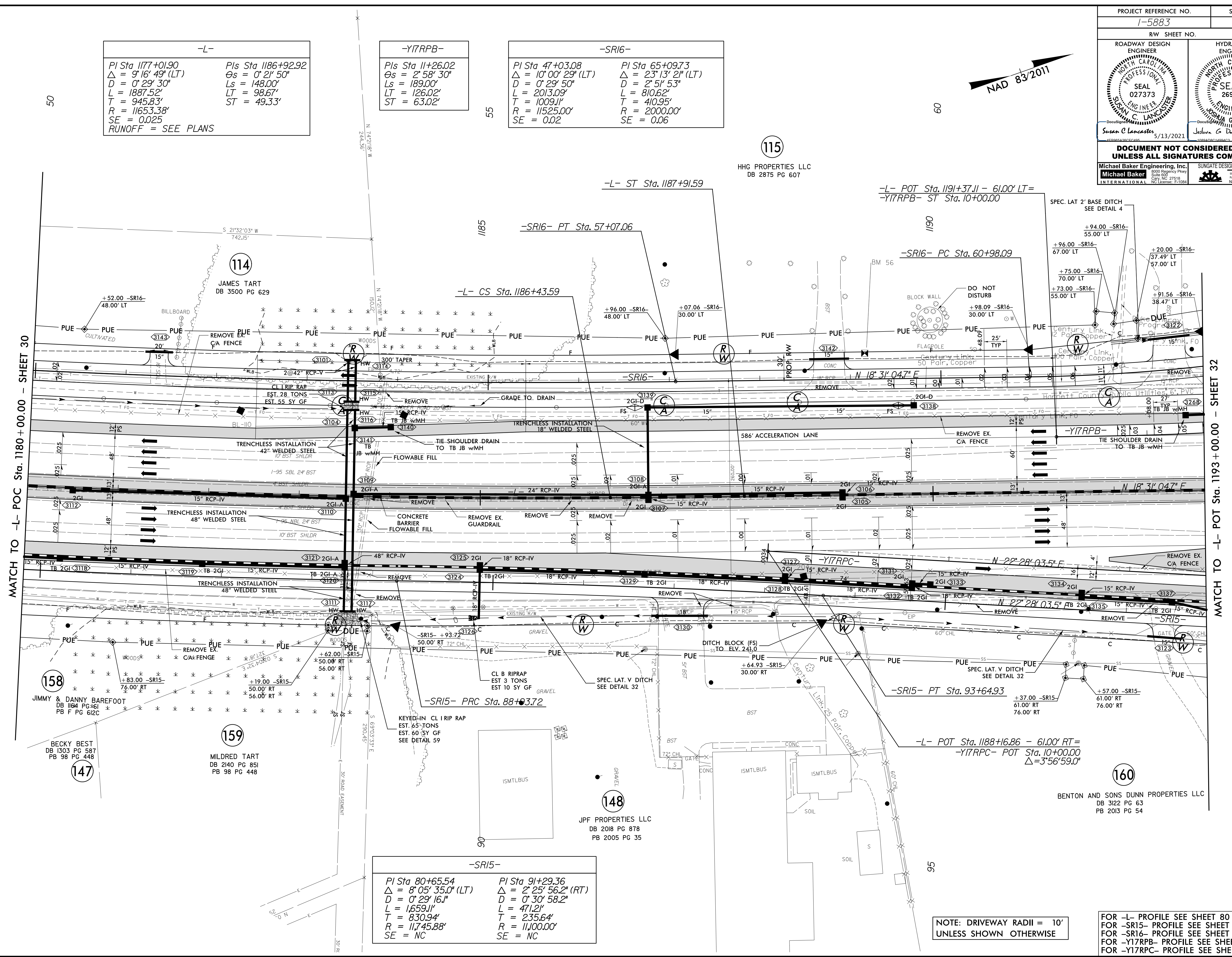
|   |  |
|---|--|
| PI Sta 47+03.08<br>Δ = 10° 00' 29" (LT)<br>D = 0° 29' 50"<br>L = 2013.09'<br>T = 1009.11'<br>R = 11525.00'<br>SE = 0.02 | PI Sta 65+09.73<br>Δ = 23° 13' 21" (LT)<br>D = 2° 51' 53"<br>L = 810.62'<br>T = 410.95'<br>R = 2000.00'<br>SE = 0.06 |
|---|--|

**-SR15-**

|   |   |
|---|---|
| PI Sta 80+65.54<br>Δ = 8° 05' 35.0" (LT)<br>D = 0° 29' 16.1"<br>L = 1,659.11'<br>T = 830.94'<br>R = 11,745.88'<br>SE = NC | PI Sta 91+29.36<br>Δ = 2° 25' 56.2" (RT)<br>D = 0° 30' 58.2"<br>L = 471.21'<br>T = 235.64'<br>R = 11,000.00'<br>SE = NC |
|---|---|



115  
HHG PROPERTIES LLC  
DB 2875 PG 607



MATCH TO -L- POC Sta. 1180+00.00 - SHEET 30

MATCH TO -L- POT Sta. 1193+00.00 - SHEET 32

NOTE: DRIVEWAY RADII = 10'

FOR -L- PROFILE SEE SHEET 80  
FOR -SR15- PROFILE SEE SHEET 122 & 123  
FOR -SR16- PROFILE SEE SHEET 125  
FOR -Y17RPB- PROFILE SEE SHEET 114  
FOR -Y17RPC- PROFILE SEE SHEET 115