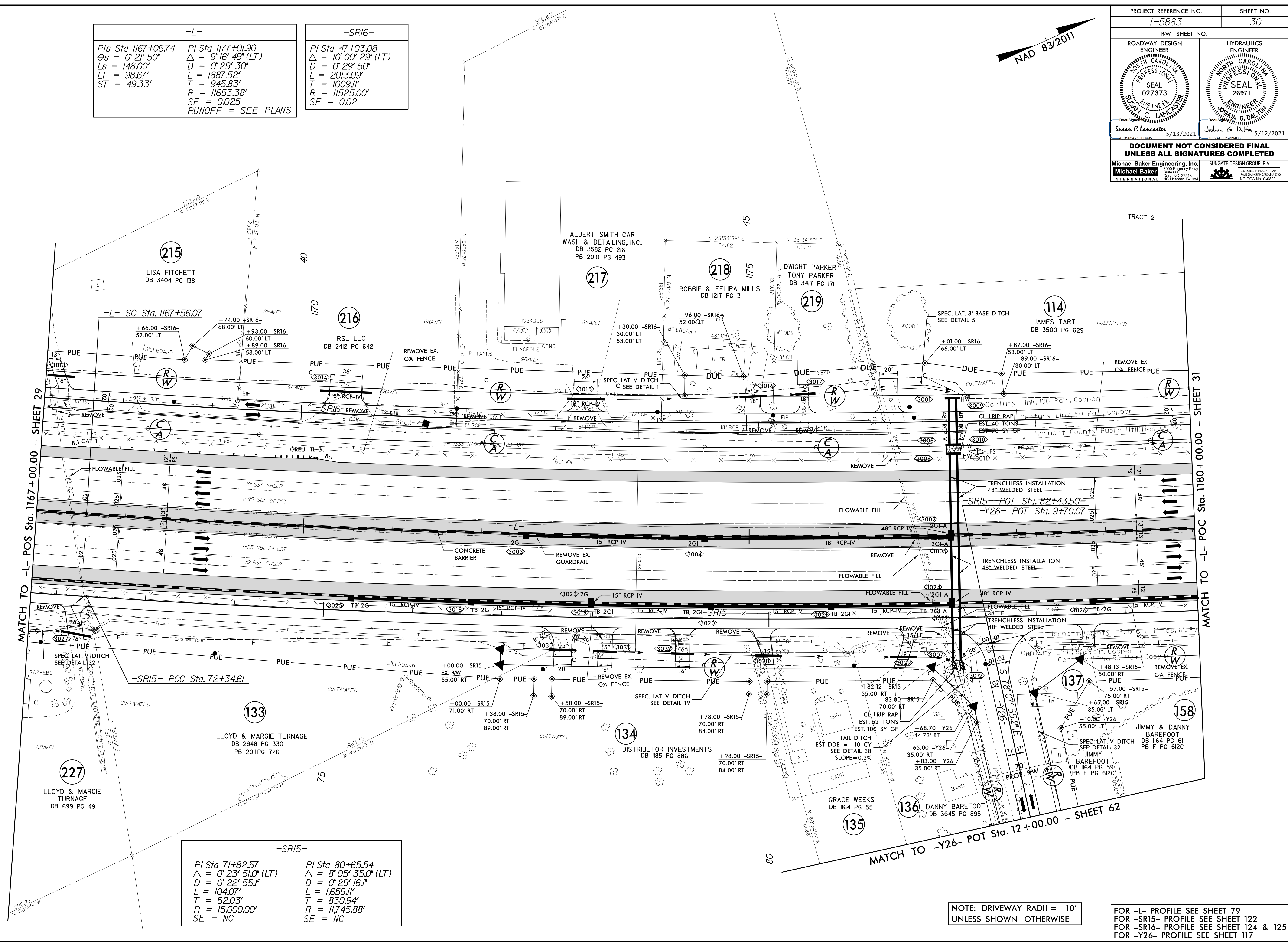


PROJECT REFERENCE NO. 1-5883		SHEET NO. 30	
RW SHEET NO.			
ROADWAY DESIGN ENGINEER SUNGATE DESIGN GROUP, P.A. SEAL 027373 SUNNY C. LANCASTER 5/13/2021		HYDRAULICS ENGINEER SUNGATE DESIGN GROUP, P.A. SEAL 26971 JOSHUA G. DALTON 5/12/2021	
DOCUMENT NOT CONSIDERED FINAL UNLESS ALL SIGNATURES COMPLETED			
Michael Baker Engineering, Inc. INTERNATIONAL		SUNGATE DESIGN GROUP, P.A.	

-L-	
PIs Sta 1167+06.74	PI Sta 1177+01.90
$\Delta = 0^\circ 21' 50''$	$\Delta = 9^\circ 16' 49''$ (LT)
$L = 148.00'$	$D = 0^\circ 29' 30''$
$LT = 98.67'$	$L = 1887.52'$
$ST = 49.33'$	$T = 945.83'$
	$R = 11653.38'$
	$SE = 0.025$
	RUNOFF = SEE PLANS

-SR16-	
PI Sta 47+03.08	$\Delta = 10^\circ 00' 29''$ (LT)
$D = 0^\circ 29' 50''$	$L = 2013.09'$
$T = 1009.11'$	$R = 11525.00'$
$SE = 0.02$	

-SR15-	
PI Sta 71+82.57	PI Sta 80+65.54
$\Delta = 0^\circ 23' 51.0''$ (LT)	$\Delta = 8^\circ 05' 35.0''$ (LT)
$D = 0^\circ 22' 55.1''$	$D = 0^\circ 29' 16.1''$
$L = 104.07'$	$L = 1659.11'$
$T = 52.03'$	$T = 830.94'$
$R = 15,000.00'$	$R = 11,745.88'$
$SE = NC$	$SE = NC$



NOTE: DRIVEWAY RADII = 10'
UNLESS SHOWN OTHERWISE

FOR -L- PROFILE SEE SHEET 79
FOR -SR15- PROFILE SEE SHEET 122
FOR -SR16- PROFILE SEE SHEET 124 & 125
FOR -Y26- PROFILE SEE SHEET 117

REVISIONS

8/17/19

06-APR-2021 15:07
N:\1-598668_Rdy_psh_30.dgn