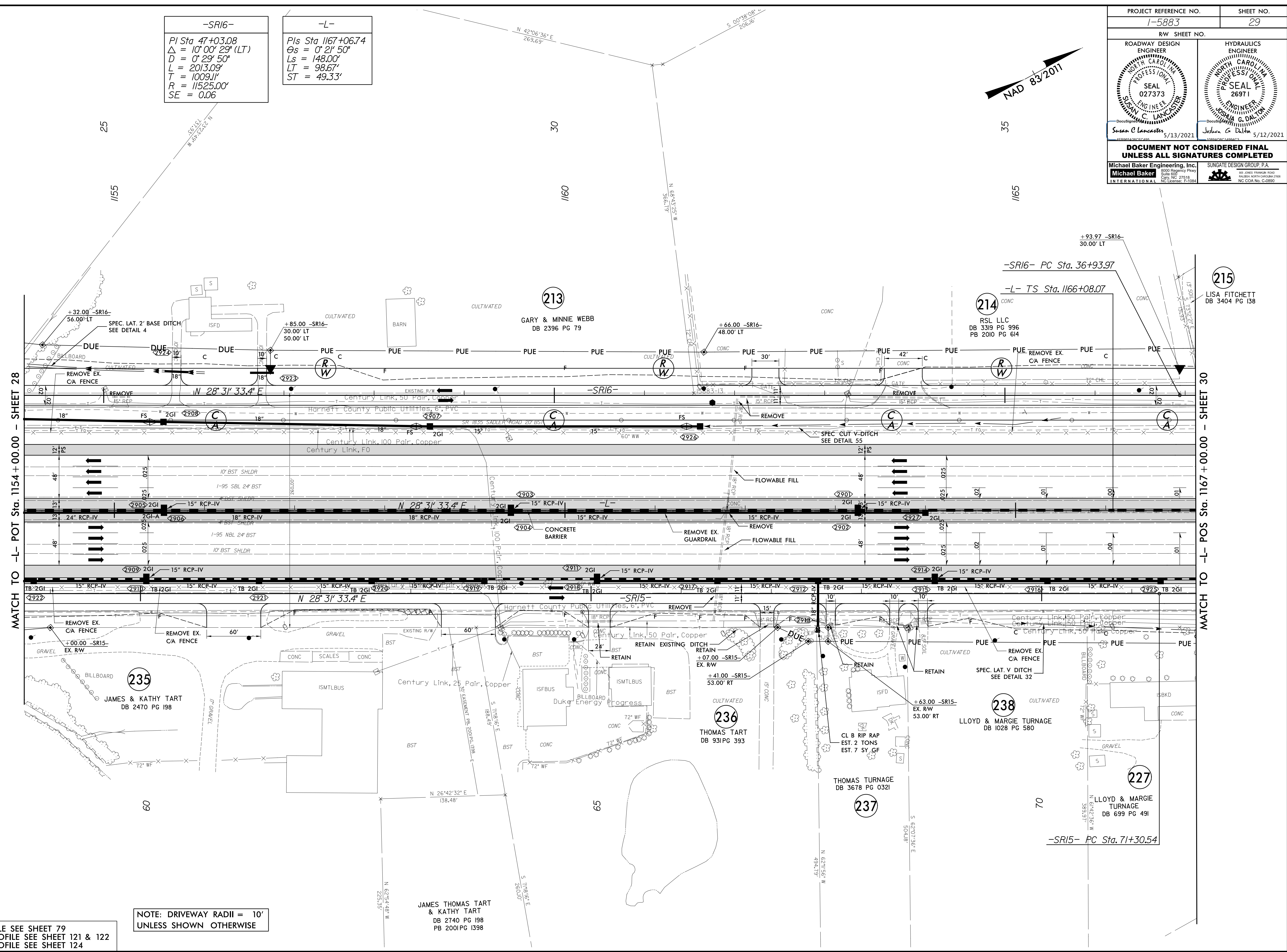


PROJECT REFERENCE NO. 1-5883		SHEET NO. 29	
RW SHEET NO.			
ROADWAY DESIGN ENGINEER SUNGATE DESIGN GROUP, P.A. SEAL 027373 SUSAN C. LANCASTER 5/13/2021		HYDRAULICS ENGINEER SUNGATE DESIGN GROUP, P.A. SEAL 26971 JOSHUA G. DALTON 5/12/2021	
DOCUMENT NOT CONSIDERED FINAL UNLESS ALL SIGNATURES COMPLETED			
Michael Baker Engineering, Inc. 10000 Regency Parkway Suite 600 Charlotte, NC 27218 NC License: P-1084		SUNGATE DESIGN GROUP, P.A. 620 JONES FRANKLIN ROAD FARMERS FORK, NORTH CAROLINA 27834 NC COA No. C-48890	



-SR16-
 PI Sta 47+03.08
 $\Delta = 10^{\circ} 00' 29''$ (LT)
 $D = 0^{\circ} 29' 50''$
 $L = 2013.09'$
 $T = 1009.11'$
 $R = 11525.00'$
 $SE = 0.06$

-L-
 Pls Sta 1167+06.74
 $\Theta_s = 0^{\circ} 21' 50''$
 $L_s = 148.00'$
 $LT = 98.67'$
 $ST = 49.33'$



MATCH TO -L- POT Sta. 1154+00.00 - SHEET 28

MATCH TO -L- POS Sta. 1167+00.00 - SHEET 30

NOTE: DRIVEWAY RADII = 10'
UNLESS SHOWN OTHERWISE

FOR -L- PROFILE SEE SHEET 79
 FOR -SR15- PROFILE SEE SHEET 121 & 122
 FOR -SR16- PROFILE SEE SHEET 124

8/17/19

R:\MAR-2021\08-42-V\1-59866B_Rdy_psh_29.dgn