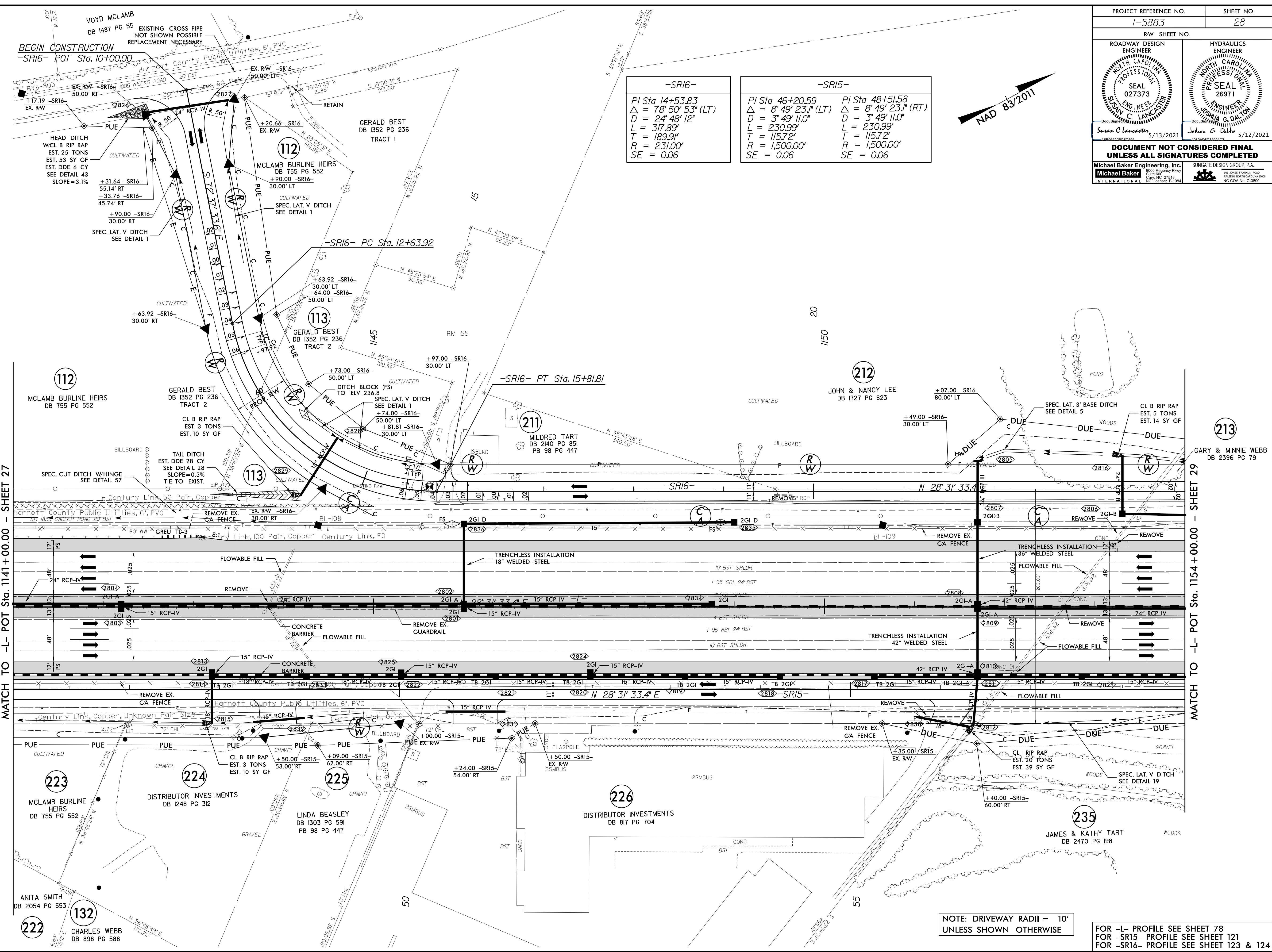


PROJECT REFERENCE NO. 1-5883		SHEET NO. 28	
RW SHEET NO.			
ROADWAY DESIGN ENGINEER SUNGATE DESIGN GROUP, P.A. SEAL 027373 SUNGATE DESIGN GROUP, P.A. C. LANCASTER 5/13/2021		HYDRAULICS ENGINEER SUNGATE DESIGN GROUP, P.A. SEAL 26971 SUNGATE DESIGN GROUP, P.A. J. DALTON 5/12/2021	
DOCUMENT NOT CONSIDERED FINAL UNLESS ALL SIGNATURES COMPLETED			
Michael Baker Engineering, Inc. 1000 Regency Place Suite 600 Durham, NC 27618 Tel: 919.286.1000 Fax: 919.286.1001 www.mbakergroup.com		SUNGATE DESIGN GROUP, P.A. 602 JONES FRANKLIN ROAD RALEIGH, NORTH CAROLINA 27618 Tel: 919.286.1000 Fax: 919.286.1001 www.sungatedesign.com	

-SR16-	-SR15-	
PI Sta 14+53.83	PI Sta 46+20.59	PI Sta 48+51.58
$\Delta = 78^{\circ} 50' 53" (LT)$	$\Delta = 8^{\circ} 49' 23" (LT)$	$\Delta = 8^{\circ} 49' 23" (RT)$
$D = 24' 48" 12"$	$D = 3' 49' 11.0"$	$D = 3' 49' 11.0"$
$L = 317.89'$	$L = 230.99'$	$L = 230.99'$
$T = 189.91'$	$T = 115.72'$	$T = 115.72'$
$R = 231.00'$	$R = 1,500.00'$	$R = 1,500.00'$
$SE = 0.06$	$SE = 0.06$	$SE = 0.06$



MATCH TO -L- POT Sta. 1141+00.00 - SHEET 27

MATCH TO -L- POT Sta. 1154+00.00 - SHEET 29

NOTE: DRIVEWAY RADII = 10'
UNLESS SHOWN OTHERWISE

FOR -L- PROFILE SEE SHEET 78
FOR -SR15- PROFILE SEE SHEET 121
FOR -SR16- PROFILE SEE SHEET 123 & 124

REVISIONS

06-APR-2021 15:07 AT: 59866B_Rdy_psh_28.dgn
8:44:25 AM