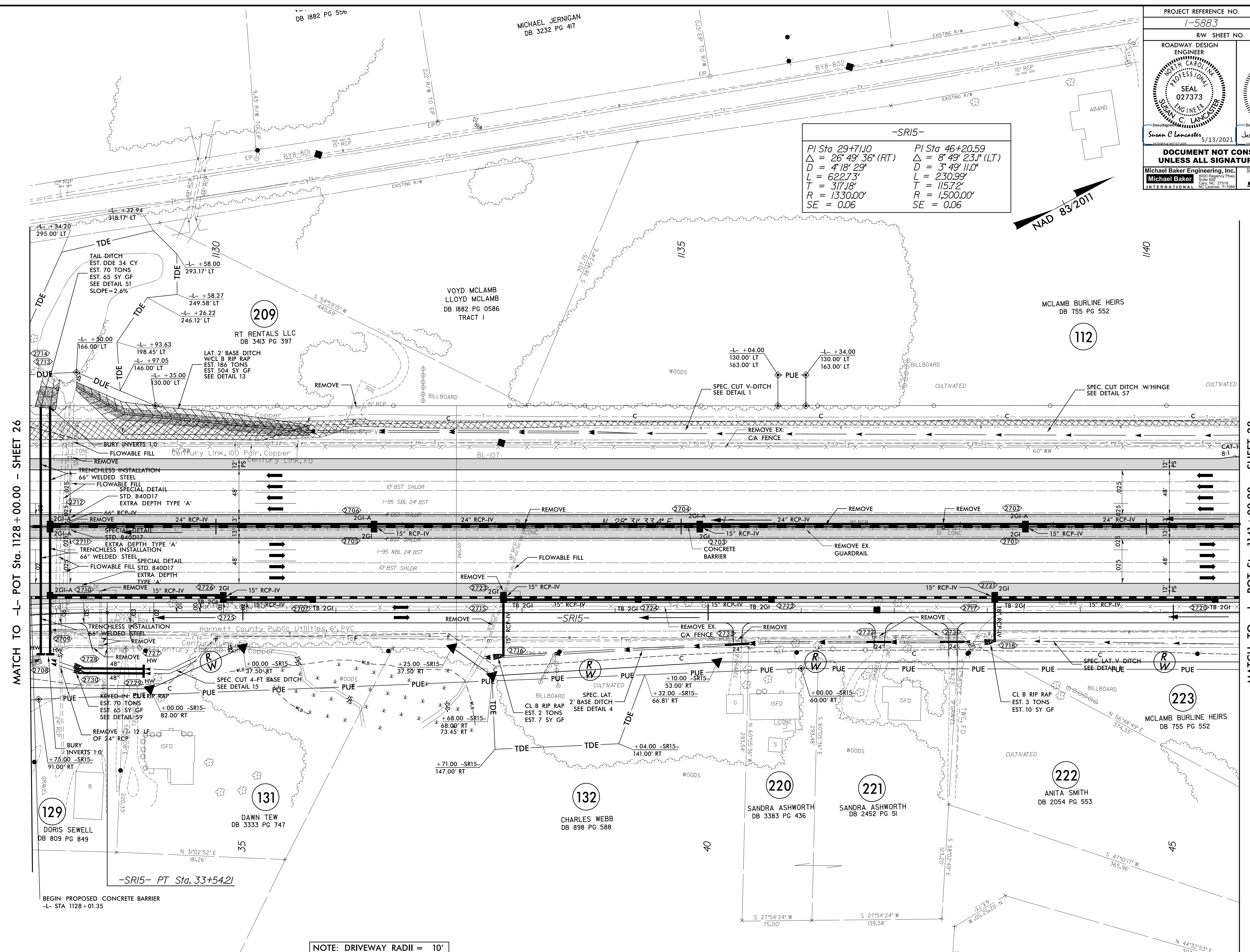


PROJECT REFERENCE NO. 1-5883		SHEET NO. 27	
RW SHEET NO.		HYDRAULICS ENGINEER	
ROADWAY DESIGN ENGINEER		SEAL 027373	
SUNNY C. LANCASTER 5/13/2021		JOSHUA G. DALTON 5/12/2021	
<b>DOCUMENT NOT CONSIDERED FINAL UNLESS ALL SIGNATURES COMPLETED</b>			
Michael Baker Engineering, Inc. 1000 Regency Pkwy Suite 600 Durham, NC 27618 Tel: 919.286.8000 Fax: 919.286.8001 www.mbakergroup.com		SUNGATE DESIGN GROUP, P.A. 200 ZONES FRANKLIN ROAD RALEIGH, NORTH CAROLINA 27618 NC License: P-10884	

-SRI5-

PI Sta 29+71.00	PI Sta 46+20.59
$\Delta = 26^{\circ} 49' 36''$ (RT)	$\Delta = 8^{\circ} 49' 23.1''$ (LT)
$D = 4' 18'' 29''$	$D = 3' 49'' 11.0''$
$L = 622.73'$	$L = 230.99'$
$T = 317.18'$	$T = 115.72'$
$R = 1330.00'$	$R = 1500.00'$
$SE = 0.06$	$SE = 0.06$



MATCH TO -L- POT Sta. 1128 + 00.00 - SHEET 26

MATCH TO -L- POT Sta. 1141 + 00.00 - SHEET 28

NOTE: DRIVEWAY RADII = 10' UNLESS SHOWN OTHERWISE

FOR -L- PROFILE SEE SHEET 78  
FOR -SRI5- PROFILE SEE SHEET 120 & 121

8/17/19  
REVISIONS  
03 APR 2021 08:40 L:\598668\_Rdy\_psh\_27.dgn  
03 APR 2021 08:40 L:\598668\_Rdy\_psh\_27.dgn