

8/17/19

PROJECT REFERENCE NO. 1-5883		SHEET NO. 26	
RW SHEET NO.		HYDRAULICS ENGINEER	
ROADWAY DESIGN ENGINEER		SEAL 26971	
DOCUMENT NOT CONSIDERED FINAL UNLESS ALL SIGNATURES COMPLETED			
Michael Baker Engineering, Inc. Michael Baker International		SUNGATE DESIGN GROUP, P.A. Sungate Design Group, P.A.	

**-DR3-**

PI Sta 17+33.13 Δ = 16° 09' 49" (RT) D = 3° 02' 52" L = 530.37' T = 266.96' R = 1880.00' SE = 0.02	PI Sta 22+30.62 Δ = 1° 29' 36" (RT) D = 0° 19' 08" L = 468.13' T = 234.08' R = 17960.00' SE = 0.02
--	--



109 RD WEEKS ESTATE LLC  
DB 3442 PG 920  
PB 2005 PG 1055

906 JAMES MASSENGILL  
DB 2469 PG 191  
PB 2005 PG 1055

905 CHERYL FERGUSON  
DB 3225 PG 866  
PB 2005 PG 1055

207 ROGER & LUCILLE MAY  
DB 1748 PG 485  
PB 2003 PG 375

208 RT RENTALS LLC  
DB 3413 PG 397

209 RT RENTALS LLC  
DB 3381 PG 763

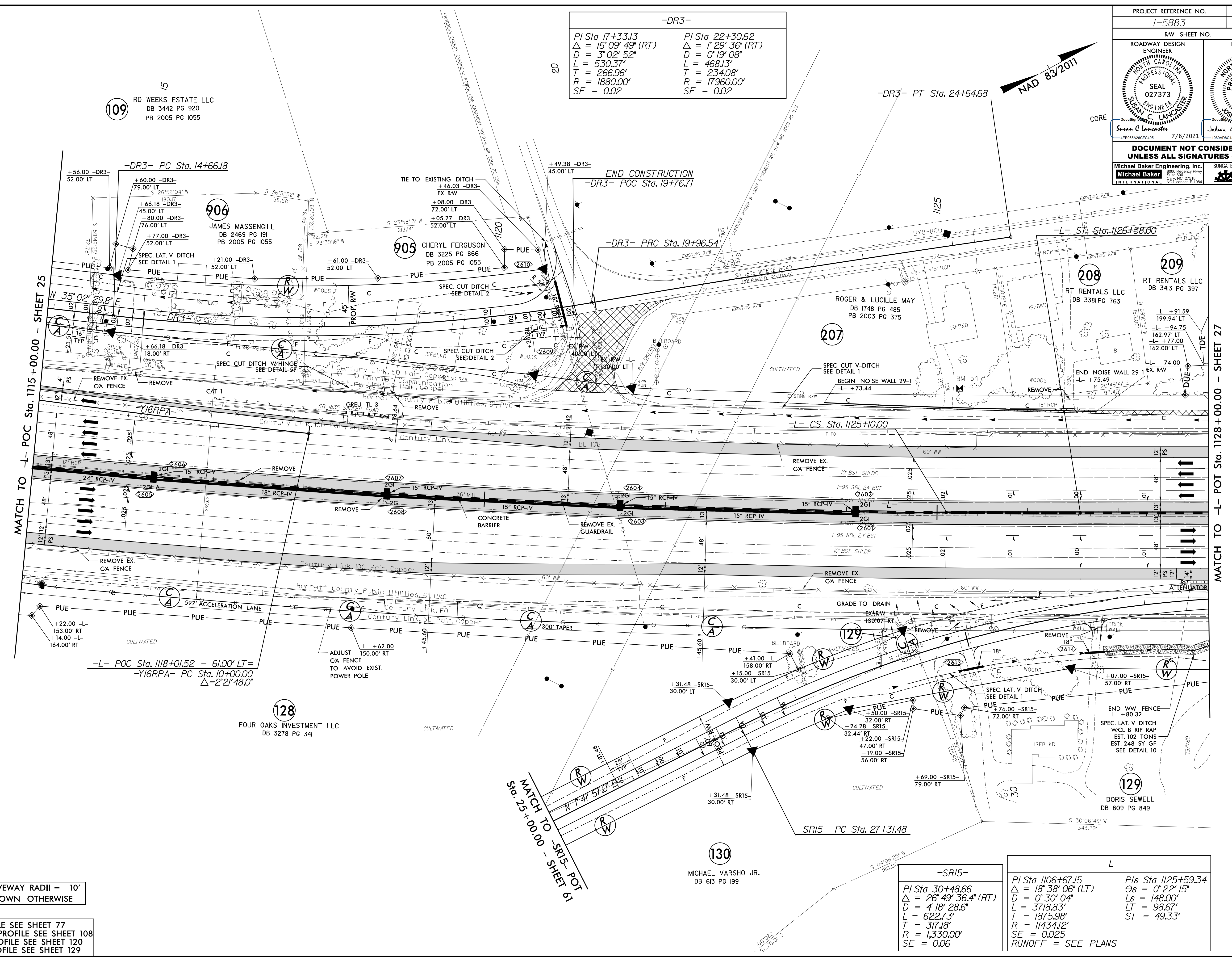
128 FOUR OAKS INVESTMENT LLC  
DB 3278 PG 341

130 MICHAEL VARSHO JR.  
DB 613 PG 199

129 DORIS SEWELL  
DB 809 PG 849

NOTE: DRIVEWAY RADII = 10'  
UNLESS SHOWN OTHERWISE

FOR -L- PROFILE SEE SHEET 77  
FOR -Y16RPA- PROFILE SEE SHEET 108  
FOR -SR15- PROFILE SEE SHEET 120  
FOR -DR3- PROFILE SEE SHEET 129



REVISIONS

MATCH TO -L- POC Sta. 1115+00.00 - SHEET 25

MATCH TO -SR15- POT Sta. 25+00.00 - SHEET 61

MATCH TO -L- POT Sta. 1128+00.00 - SHEET 27

8/17/2021 12:26  
P:\11-59866B\_Rdy\_psh\_26.dgn