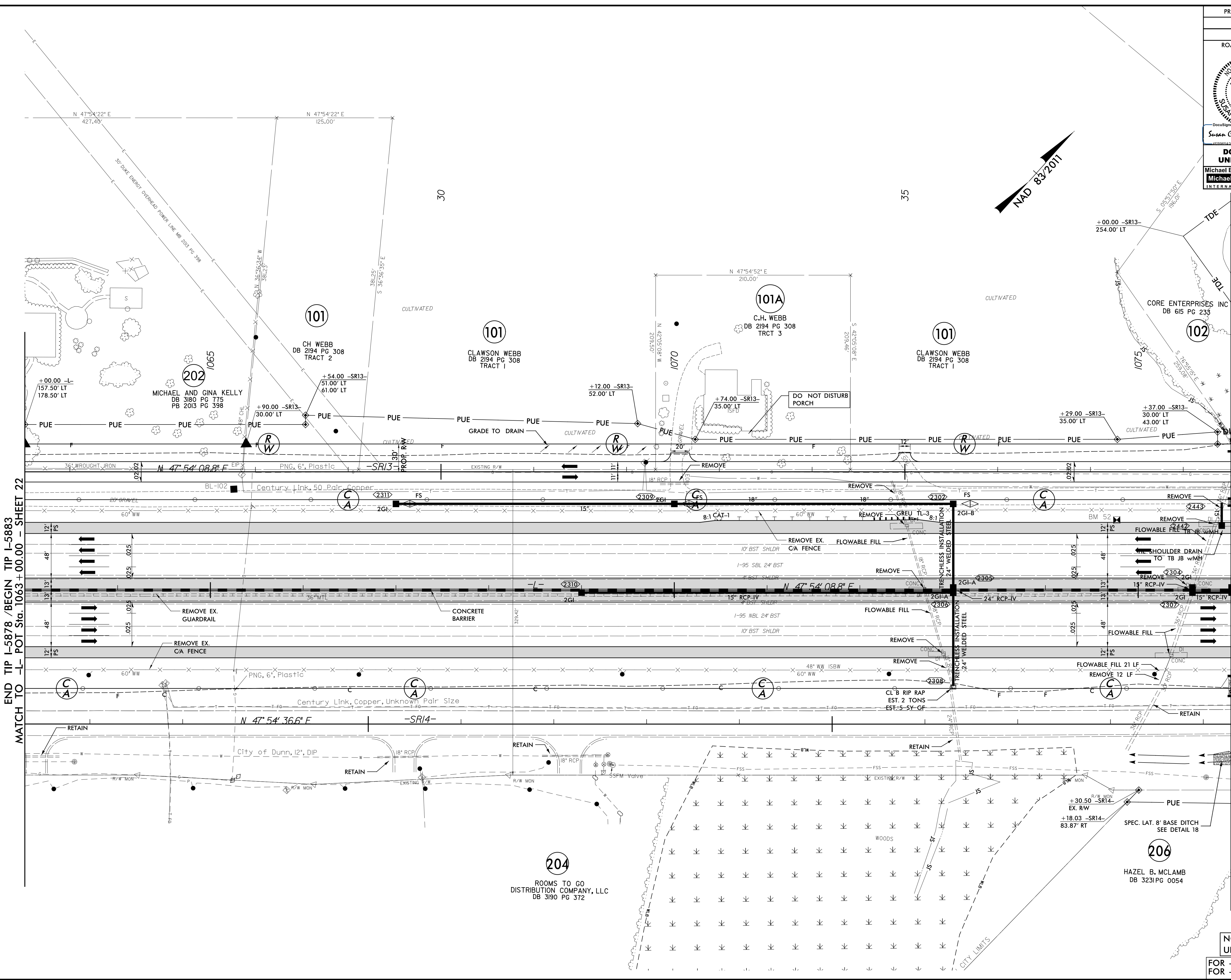


| | |
|---|---|
| PROJECT REFERENCE NO. 1-5883 | SHEET NO. 23 |
| RW SHEET NO. | |
| ROADWAY DESIGN ENGINEER SUSAN C. LANCASTER SEAL 027373 SUNGATE DESIGN GROUP, P.A. | HYDRAULICS ENGINEER JOSHUA G. DALTON SEAL 26971 SUNGATE DESIGN GROUP, P.A. |
| DOCUMENT NOT CONSIDERED FINAL UNLESS ALL SIGNATURES COMPLETED | |
| Michael Baker Engineering, Inc. 4000 Rindgeville Pkwy Suite 600 Cary, NC 27518 NC License: E-1084 | SUNGATE DESIGN GROUP, P.A. 602 ZONES FRANKER ROAD HALES BROOK-CAROLINA DRIVE NC COA No. C-4890 |



REVISIONS



END TIP I-5878 / BEGIN TIP I-5883
MATCH TO -L- POT Sta. 1063+00.00 - SHEET 22

MATCH TO -L- POT Sta. 1076+00.00 - SHEET 24

06-APR-2021 10:59
C:\Users\slan\OneDrive\Documents\1-5883\1-5883.dgn

204
ROOMS TO GO
DISTRIBUTION COMPANY, LLC
DB 3190 PG 372

206
HAZEL B. MCLAMB
DB 3231 PG 0054

NOTE: DRIVEWAY RADII = 10'
UNLESS SHOWN OTHERWISE
FOR -L- PROFILE SEE SHEET 75
FOR -SR13- PROFILE SEE SHEET 118 & 119