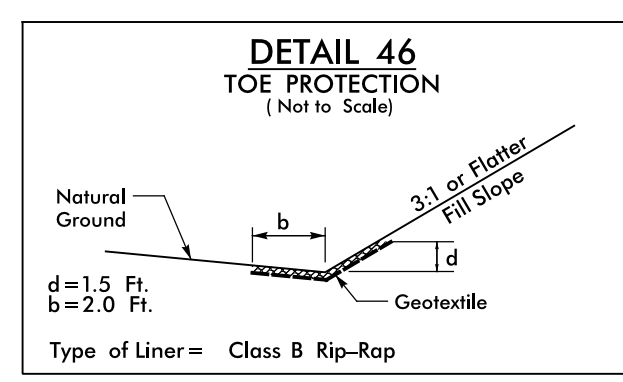
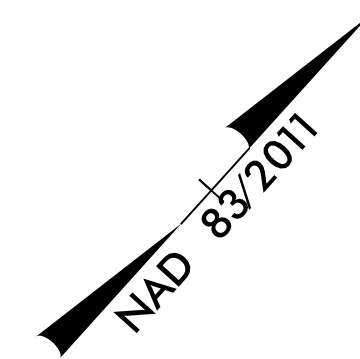
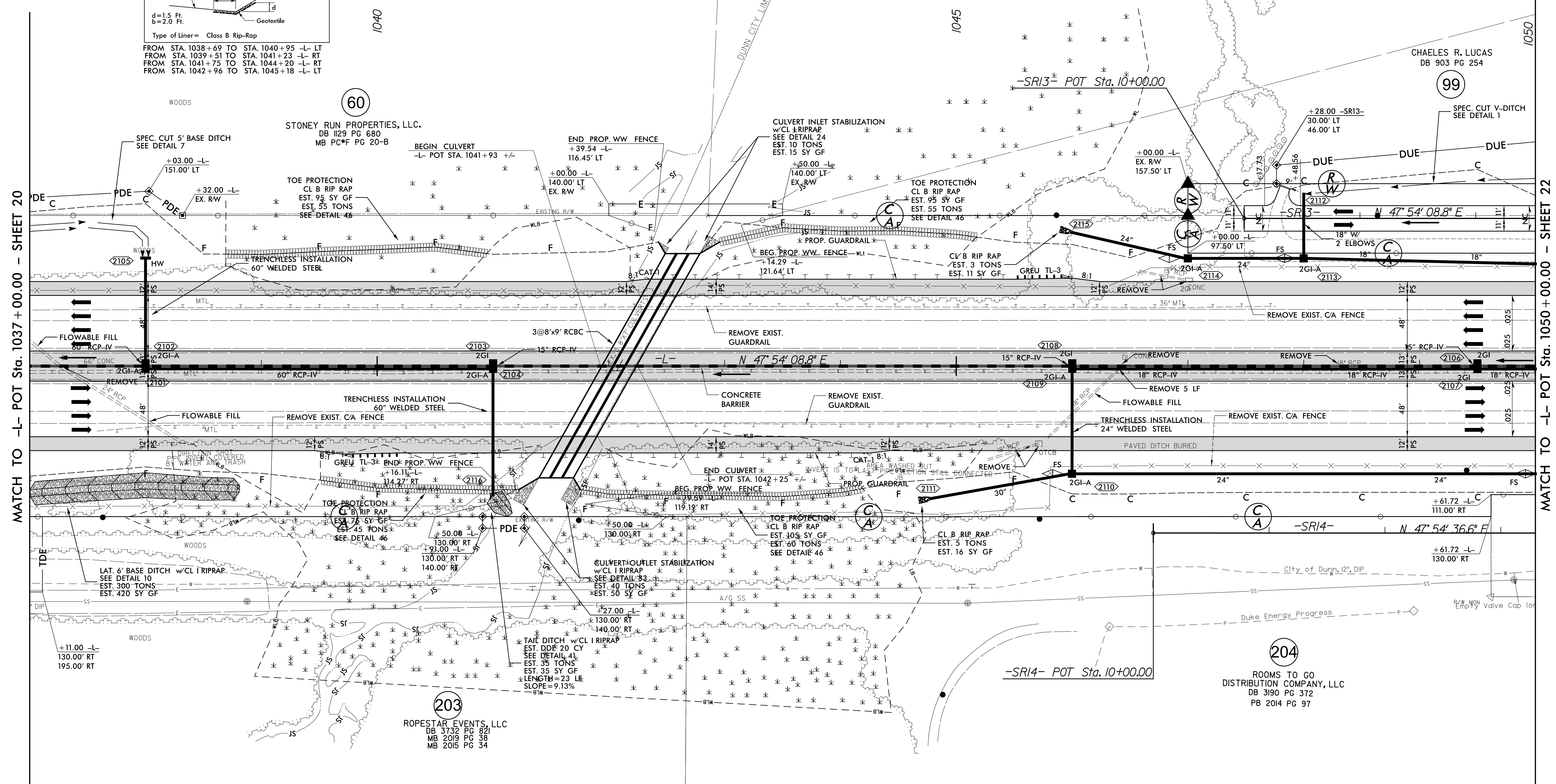


PROJECT REFERENCE NO. 1-5878		SHEET NO. 21	
RW SHEET NO.			
ROADWAY DESIGN ENGINEER SUSAN C LANCASTER SEAL 027373 NORTH CAROLINA PROFESSIONAL ENGINEER		HYDRAULICS ENGINEER JOSHUA G DALTON SEAL 26971 NORTH CAROLINA PROFESSIONAL ENGINEER	
Susan C Lancaster 5/13/2021		Joshua G Dalton 5/12/2021	
DOCUMENT NOT CONSIDERED FINAL UNLESS ALL SIGNATURES COMPLETED			
Michael Baker Engineering, Inc. 1800 Piedmont Drive Raleigh, NC 27618 MICHAEL BAKER INTERNATIONAL		SUNGATE DESIGN GROUP, P.A. 10000 SunGate Blvd Raleigh, NC 27617 SUNGATE DESIGN GROUP, P.A.	



FROM STA. 1038+69 TO STA. 1040+95 -L- LT  
 FROM STA. 1039+51 TO STA. 1041+23 -L- RT  
 FROM STA. 1041+75 TO STA. 1044+20 -L- RT  
 FROM STA. 1042+96 TO STA. 1045+18 -L- LT



MATCH TO -L- POT Sta. 1037+00.00 - SHEET 20

MATCH TO -L- POT Sta. 1050+00.00 - SHEET 22

NOTE: DRIVEWAY RADII = 10'  
UNLESS SHOWN OTHERWISE

FOR -L- PROFILE SEE SHEET 74  
FOR -SR13- PROFILE SEE SHEET 118

5/14/99

R:\2-MAR-2021\08146-5986B-Rdy-psh-21.dgn  
SUNGATE DESIGN GROUP, P.A.